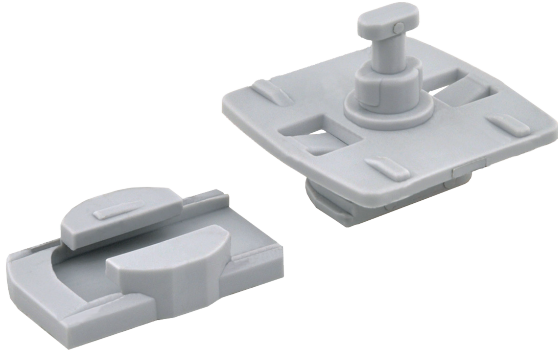


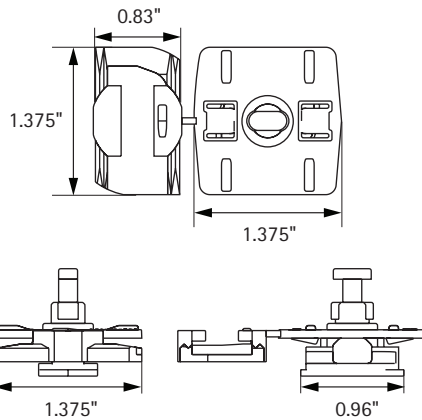
# starQuick® Universal Rail Adapter



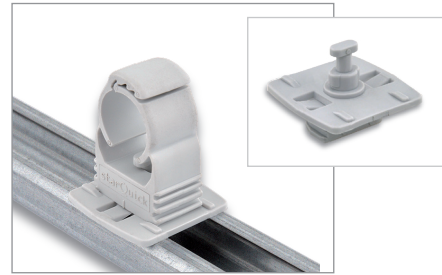
## Product Specifications:

- Used to easily mount starQuick® clamps to RapidRail®, Strut Rail or Rapid Sliding Wall Brackets (RSWB)
- Used to add pipework quickly and simply to an existing installation
- Suitable for use with starQuick® clamp sizes SQ-10 to SQ-51
- Suitable for WM15 RapidRail® and 1-5/8" Strut
- Resistant to UV, aging, oil and gasoline
- Temperature resistance: from approximately -104°F to approximately 194°F constant, approximately 266°F peak
- Material: modified PA6 (polyamide)

Item number	For Rail	Items per pkg
0854332	WM15+ Strut	50



For Strut



For RapidRail® and Rapid Sliding Wall Bracket

Product Submittal		Date:	Architect / Owner:
Job Name:			
			Contractor:
Part No.	Qty:	Notes:	

THE INFORMATION CONTAINED IN THIS SUBMITTAL SHEET IS PROPRIETARY TO WALRAVEN, INC. AND IS SUBJECT TO CHANGE WITHOUT NOTICE. THIS INFORMATION MAY NOT BE REPRODUCED IN PART OR WHOLE WITHOUT WRITTEN AUTHORIZATION FROM WALRAVEN, INC. **walraven**