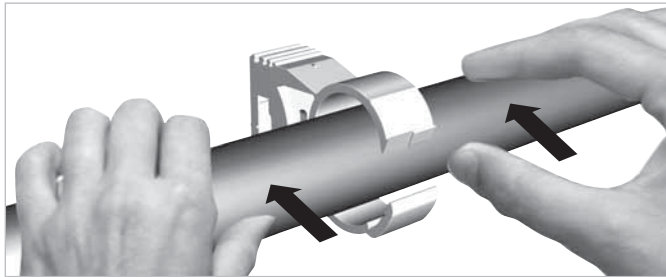
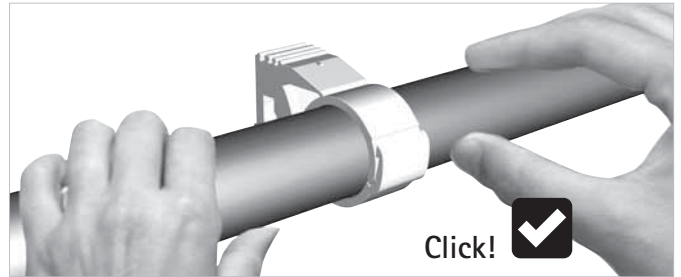


# starQuick® - Assembly instruction

## Basic instruction



1.



2.

## Certification

### UL

Underwriters Laboratories Inc. has been testing to specification UL 1565 for limited support. As per this standard the clamps are tested for a maximum temperature of +50 °C (+122 °F) and a maximum rated safe load of:

- 60 lbs (267 N) for Ø 0.37 - 1.10 inch (SQ 10 - 25)
- 75 lbs (333 N) for Ø 1.08 - 2.17 inch (SQ 28 - 51)
- 150 lbs (666 N) for Ø 2.30 - 2.56 inch (SQ 59)



### UPC

- According to PS 42-2022  
Certified by IAPMO



### Kiwa

**kiwa**

≤ SQ 12 - 40

### IPC

- Complies with IPC  
(International Plumbing Code)

UL Listed products include starQuick® Clamp Grey (0854010 - 0854063) and starQuick® Clamp Grey + M6 nut (0854610 - 0854654).

## Technical info

As per our own testing the acceptable safe use rises above the UL Listed values.

Walraven recommends the safe application of starQuick® Clamps to the following temperatures and loads:

Grey	Grey + M6 nut	White	Copper	Type	Ø (mm)	Ø (DN)	Ø (")	Ø IPS	Ø CTS	Fa,z*	Fb,z*
0854010	-	0855010	-	SQ-10	10 - 12	6	0.37 - 0.47	1/8	1/4	170	500
0854012	0854612	0855012	0855812	SQ-12	12 - 14	8	0.45 - 0.59	1/4	3/8	180	550
0854015	0854615	0855015	0855815	SQ-15	14 - 16	-	0.55 - 0.64	-	1/2	200	600
0854018	0854618	0855018	0855818	SQ-17	16 - 20	10	0.62 - 0.78	3/8	5/8	230	700
0854022	0854622	0855022	0855822	SQ-20	20 - 23	15	0.76 - 0.92	1/2	3/4	270	800
0854028	0854628	0855028	0855828	SQ-25	24 - 28	20	0.94 - 1.10	3/4	-	280	850
0854031	0854631	0855031	0855831	SQ-28	28 - 32	-	1.08 - 1.25	-	1	300	900
0854035	0854635	0855035	-	SQ-32	32 - 35	25	1.22 - 1.40	1	1 1/4	330	1,000
0854038	0854638	0855038	-	SQ-36	35 - 40	-	1.37 - 1.57	-	-	370	1,100
0854042	0854642	0855042	-	SQ-40	40 - 44	32	1.54 - 1.75	1 1/4	1 1/2	400	1,200
0854050	0854650	0855050	-	SQ-47	44 - 50	-	1.73 - 1.96	-	-	430	1,300
0854054	0854654	0855054	-	SQ-51	48 - 55	40	1.88 - 2.16	1 1/2	2	470	1,400
0854063	-	0855063	-	SQ-59	59 - 65	50	2.30 - 2.55	2	-	500	1,500

\* Maximum allowed load at a temperature of +21 °C (+70 °F) and fixing with M6 starQuick® nut + M6 steel threaded rod. The values are recommended values and based on our nowadays technical knowledge, experience and statements in the literature as well as testing under laboratory circumstances. They do not relieve the user of own testing of the end product due to the big number of parameter of influence in the mounting process and the application. A legal confirmed assurance of properties or the suitability for a specific application cannot be based on our specifications.

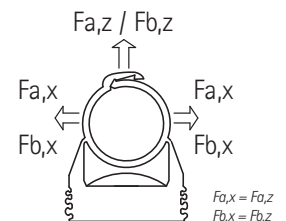
IPS = Iron Pipe Size, CTS = Copper Tube Size



- max. +90 °C (+194 °F)  
min. -40 °C (-40 °F)




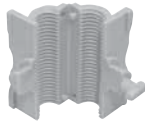
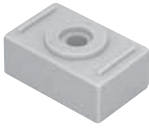







- starQuick® Clamps are suitable for use outdoors and indoors






- Fa = Max allowed load
- Fb = Breaking load

# starQuick® Accessories



<p><b>A</b></p> <p>≤ SQ-20</p>  <ul style="list-style-type: none"> <li>■ 0854000 (grey)</li> <li>■ 0855000 (White)</li> </ul>	<p><b>B</b></p> <p>≤ SQ-51</p>  <ul style="list-style-type: none"> <li>■ 0854356 (M6)</li> <li>■ 0854358 (M8)</li> </ul>	<p><b>C</b></p> <p>≤ SQ-36</p>  <ul style="list-style-type: none"> <li>■ 0854510</li> </ul>	<p><b>D</b></p> <p>≤ SQ-32</p>  <ul style="list-style-type: none"> <li>■ 0854325 (1 m)</li> </ul>	<p><b>E</b></p> <p>≤ SQ-32</p>  <ul style="list-style-type: none"> <li>■ 0854313 (For starQuick® Rail)</li> </ul>
<p><b>F</b></p>  <ul style="list-style-type: none"> <li>■ 0854301</li> </ul>	<p><b>G</b></p>  <ul style="list-style-type: none"> <li>■ 6101063 (M6)</li> </ul>	<p><b>H</b></p>  <ul style="list-style-type: none"> <li>■ 0854006 (M6, grey)</li> <li>■ 0855006 (M6, white)</li> <li>■ 0854007 (M7B, grey)</li> <li>■ 0854307 (M7F, grey)</li> <li>■ 0854308 (M8, grey)</li> </ul>	<p><b>I</b></p>  <ul style="list-style-type: none"> <li>■ 0854338 (M8)</li> </ul>	<p><b>J</b></p> <p>≤ SQ-51</p>  <ul style="list-style-type: none"> <li>■ 0854332</li> </ul>

  	<p><b>UK</b> +44 1295 75 34 00  <b>DE</b> +49 921 75600  <b>NL</b> +31 297 23 30 00  <b>BE</b> +32 16 82 20 40  <b>FR</b> +33 4 76 04 10 70</p>	<p><b>ES</b> +34 93 721 33 75  <b>PL</b> +48 12 684 00 95  <b>CZ/SK</b> +420 326 724 009  <b>HU</b> +36 1 920 2458  <b>UA</b> +380 44 351 27 47</p>	<p><b>US</b> +1 800 610 5056  <b>DK</b> +45 46 37 05 10  <b>SE</b> +46 40 36 54 20  <b>NO</b> +45 46 37 05 10  <b>GR</b> +30 210 6008565</p>	<p><b>CN</b> +86 21 5176 0268  <b>SG</b> +65 6970 0605</p> <p><b>Other countries</b>  +31 297 23 30 00</p>
---	---	---	--	--