



walraven

Easy-to-install, complete systems
with less required parts



Walraven In-Wall Solutions

For every residential plumbing installation



The value of smart

walraven.com/us

Inspired by smart solutions from the start

Walraven was established in 1942. Our founder, the great-grandfather of our current CEO, was a plumber and inventor with a love for simple and smart solutions. Now, more than 75 years later, we are a globally active company in the installation industry, still driven to develop simple, yet smart product systems. With our wide product range and expert advice, we can provide complete solutions for any project, no matter how large or complex.

The value of smart

Walraven In-Wall Solutions

For every residential plumbing installation

Every plumbing project has challenges, such as a shortage of skilled labor and installation inconsistencies. Our in-wall solutions make your job easier, faster and safer.

Our systems give you flexibility

Because plumbing professionals are using current innovations to transform the way they do business, Walraven offers an extensive range of engineered products for a non-engineered environment. Our fixed brackets and sliding strut brackets are easy to install and fit most Walraven accessories and clamps. These brackets are designed to be adjusted with all accessories mounted, giving you the flexibility during the installation process and the opportunity to prefabricate your installation to save time and labor costs on the job site.

Efficient installation

Stub-outs for copper, CPVC and PEX pipe fit in each bracket effortlessly. Our versatile starQuick® line of products, Rabbit clamps and BISMAT® clamps can be used on copper, steel, PVC, CPVC, PP and PEX pipes and can be mounted directly onto the brackets and/or metal or wood studs.

The Walraven Shower Valve Plate fits most of the popular shower valves such as Delta, American Standard, Moen, and Kohler, allowing you to use one engineered product to fit the valve of your choice for a sturdy, fast and professional installation.

Besides the wide range of products, the ease of installation and the high quality of the products offered, Walraven In-Wall Solutions contain less parts and pieces than the competitors, saving you time

and money on your install. To help reduce the in-wall noise commonly emitted from water running through pipes, most of the Walraven line of products are noise tested (by certified laboratories) and will decrease this perceived noise as well as reduce any pipe vibration that may occur. Our products are also tested to meet industry standards including corrosion resistance, flame, UV and Plenum rating.

This new product line was designed to work seamlessly with our existing products. We have expanded our product line to make your job easier and solve your installation challenges using less products, that's what we call "The value of smart".

In conclusion

3 reasons for choosing Walraven:

- **Quick and easy to install.** Our products are versatile and come with all of the hardware needed to install. No more missing parts or the inconvenience of dealing with limited hardware. You also save time and money by not having to solder every copper connection.
- **Complete systems.** Walraven products have you covered from shower head mounts to adjustable wall brackets all the way down to PEX bend supports. Our products will be available with US codes and standards approval.
- **Less parts required.** One Walraven product does the job of several of the competitors products, meaning less parts to stock and handle on the job site.

Walraven, your partner for smart plumbing support solutions!



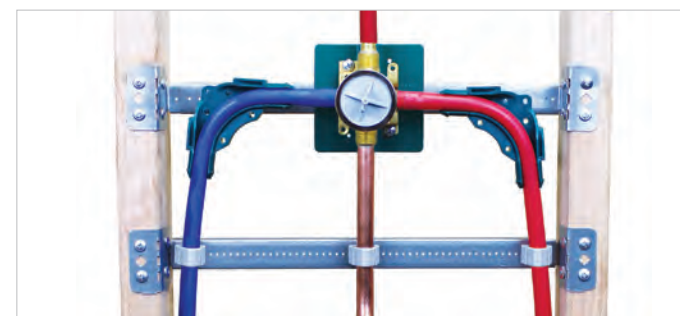
Scan QR code for video

Installation solutions

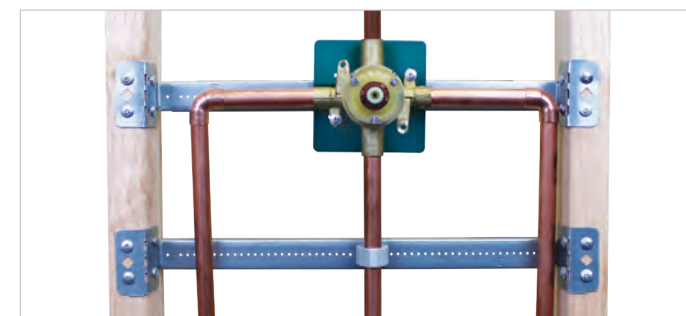
The value of smart, making your job easier

These quality products work great on their own or in combination with other Walraven products. Whether you are installing on the job or pre-fabricating, these products will save you time, effort and money, making every job easier and more efficient.

Shower valve plate installation options

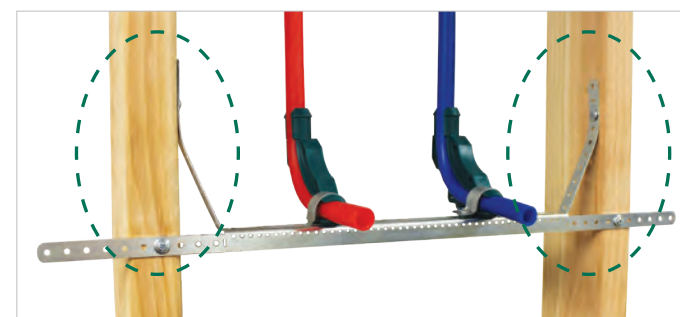


■ Rapid Sliding Wall Bracket (RSWB2), 90° PEX bends, Universal Shower Valve Plate (USVP) and starQuick® clamp used with PEX pipe



■ Rapid Sliding Wall Brackets (RSWB2), Universal Shower Valve Plate (USVP) and starQuick® clamp used to mount copper pipe

Stub-out installation options



■ Light Angled Wall Bracket (LAWB) with double PEX stub-outs clamps and 90° PEX bends. Bracket mounts at 4 points for added strength, stability and durability.



■ Heavy Angled Wall Bracket 1 (HAWB1S) + cut-out with strap holding drain pipe, stub-outs clamps used with copper pipe

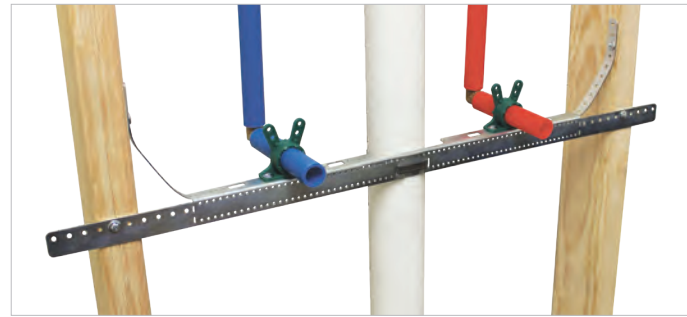


Smart solutions

By sharing our know-how, providing the best service and supplying smart product systems, we deliver smart solutions that create value and efficiency.

walraven.com/us

In-wall installation options



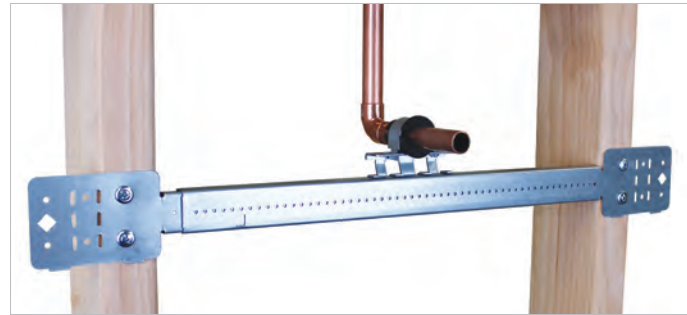
■ Heavy Angled Wall Bracket with cut-out and strap (HAWB1S) 12"-20" and Rabbit clamps used to mount PEX pipes and drain pipe



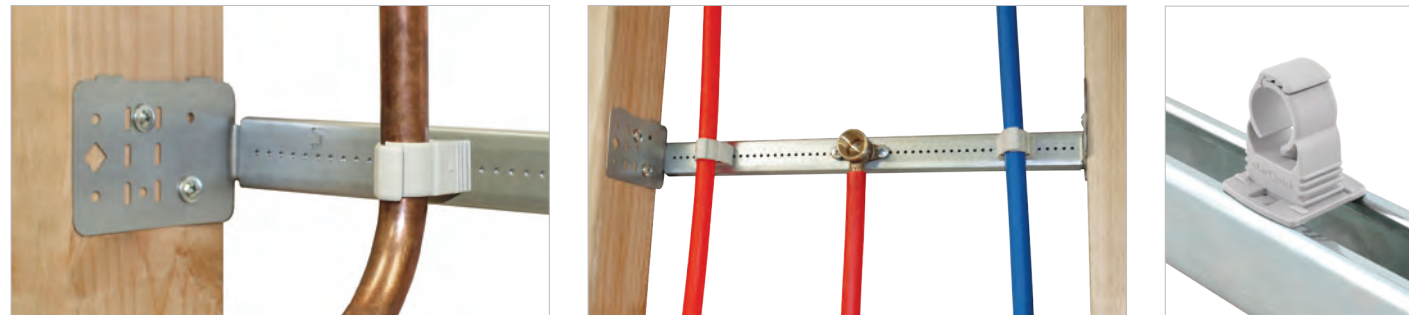
■ Rapid Sliding Wall Bracket 2 (RSWB2) 16"-24" with a 2 hole dog ear elbow for showerhead installation using copper pipe



■ Light Angled Wall Bracket (LAWB1) 12"-20" with Rabbit clamp used to secure copper pipe



■ Rapid Sliding Wall Bracket 2 (RSWB2) 16"-24", with CTS bracket assembly to mount copper pipe

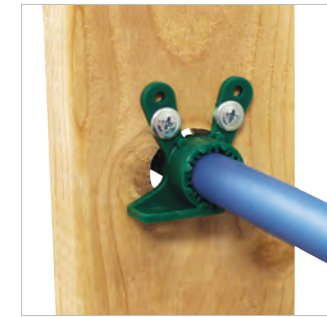


■ The starQuick® clamp guarantees reliable and time-saving pipe installation. This self-locking clamp closes when the pipe is pushed into it.

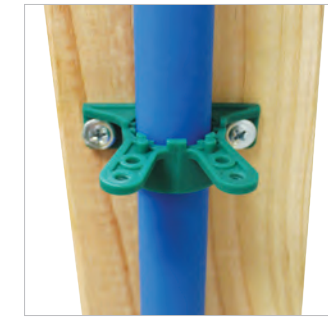
Specialty solutions



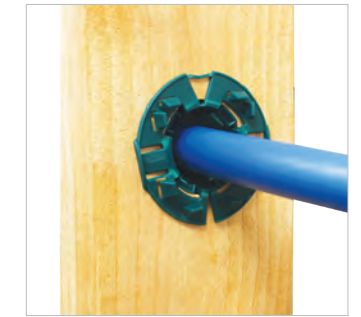
■ PEX bend mounted to wood stud for easy PEX pipe installation



■ Rabbit clamp used as grommet on wood or metal studs



■ Rabbit clamp directly mounted on stud to secure PEX pipe



■ Grommet mounted in stud to support PEX pipe



Product kits

For your convenience

Walraven product kits provide the optimal solution for a wide variety of plumbing applications, such as sinks, lavatories, water heaters, toilet stub-outs, shower heads and tub spouts. Walraven kits are versatile and easy to install while providing professional-looking plumbing system installations.

Product kits are a convenient and time-saving option

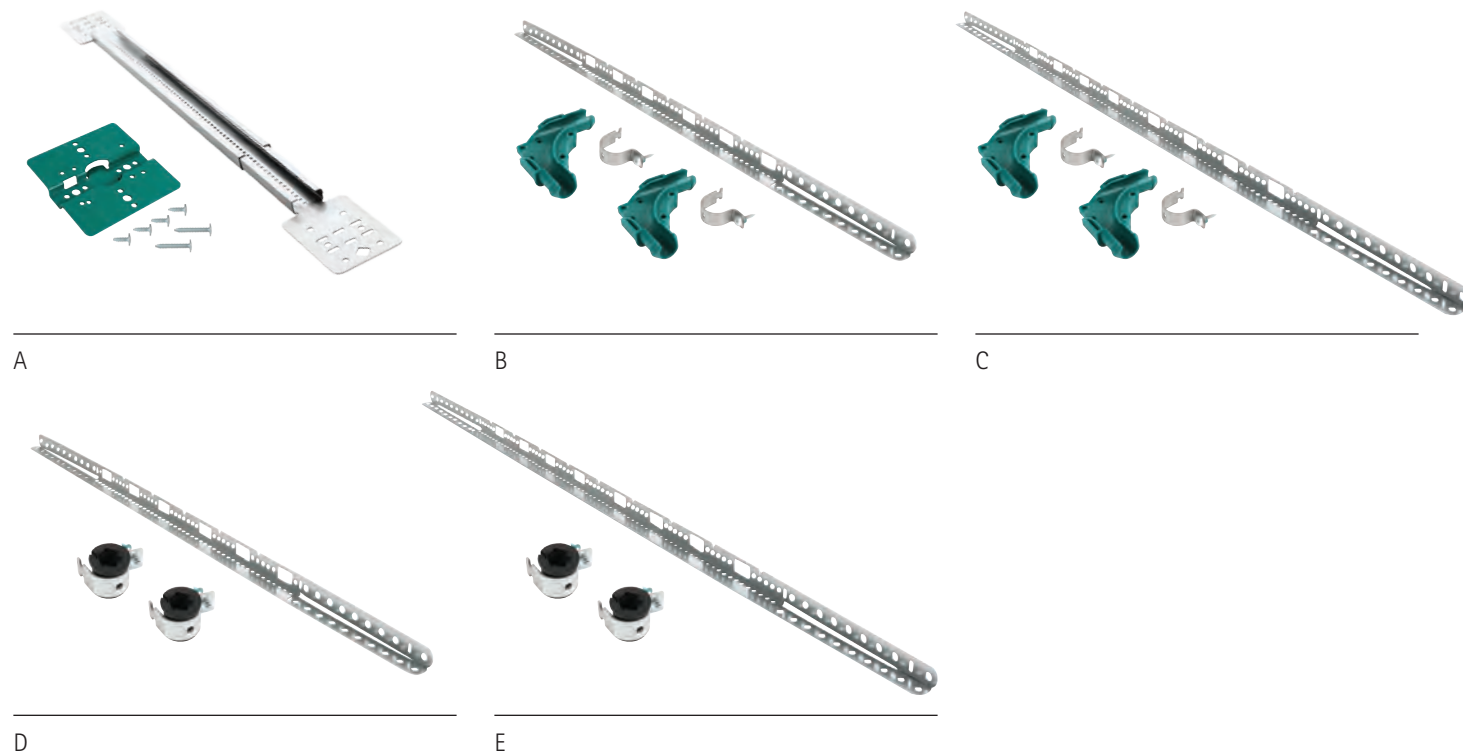


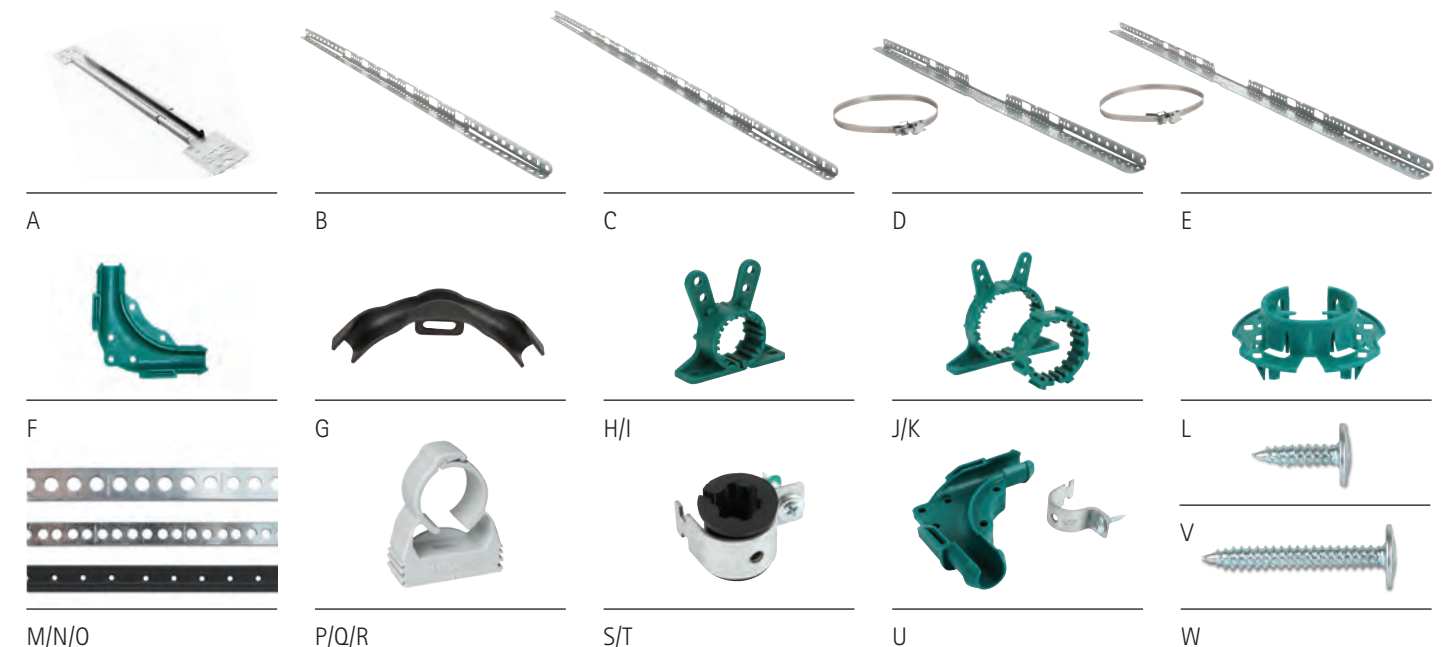
Photo	Item #	Kit includes	Fits stud spacing (inches)	Box qty. (each)
A	59490960	Rapid Sliding Wall Bracket 2 (RSWB2), Universal Shower Valve Plate (USVP), screws (bagged) *	16 - 24	50
B	59496111	Light Angled Wall Bracket 1 (LAWB1), 2 PEX stub-out brackets - 1/2" *	12 - 20	25
C	59496112	Light Angled Wall Bracket 2 (LAWB2), 2 PEX stub-out brackets - 1/2" *	18 - 26	25
D	59496211	Light Angled Wall Bracket 1 (LAWB1), 2 CTS stub-out brackets - 1/2" *	12 - 20	25
E	59496212	Light Angled Wall Bracket 2 (LAWB2), 2 CTS stub-out brackets - 1/2" *	18 - 26	25

* IAPMO/UPC approved 

Individual products

The right parts for the job

Photo	Item #	Item Description	Size (inches)	Box qty. (each)
A	59491624	Rapid Sliding Wall Bracket (RSWB2)	16 - 24	50
B	59493001	Light Angled Wall Bracket (LAWB1) *	12 - 20	25
C	59493002	Light Angled Wall Bracket (LAWB2) *	18 - 26	25
D	59494101	Heavy Angled Wall Bracket (HAWB1S) with cut-out and strap	12 - 20	10
E	59494102	Heavy Angled Wall Bracket (HAWB2S) with cut-out and strap	18 - 26	10
F	59490978	Green PEX Bend 90°	1/2	50
G	59490974	Black PEX Bend	3/4	50
H	0856016	Rabbit clamp *	1/2	100
I	0856022	Rabbit clamp *	3/4	100
J	0856035	Rabbit clamp with insert *	1 to 1-1/4	50
K	0856054	Rabbit clamp with insert *	1-1/2 to 2	25
L	08549922	1 piece Grommet pipe support - for wood and metal studs *	1/2 and 3/4	100
M	0831012	Suspension Band 1 - metal - light duty *	12 x 0.8mm	10
N	0830017	Suspension Band 2 - metal - heavy duty *	17 x 1.0mm	10
O	0832714	Suspension Band 3 - black plastic coated *	14 x 3.0mm	10
P	0854015	starQuick® Clamp *	1/2 CTS	100
Q	0854022	starQuick® Clamp *	3/4 CTS	100
R	0854031	starQuick® Clamp	1 CTS	50
S	59498212	AWB stub-out clamp with retained screw and insert - for copper pipe *	1/2	25
T	59498216	AWB stub-out clamp with retained screw and insert - for copper pipe	3/4	25
U	59498112	AWB stub-out clamp with retained screw and insert - for PEX pipe *	1/2	25
V	61839412	Phillips head modified truss/waferhead self-tapping screw-for Rabbit clamp *	#8 x 1/2	250
W	61839425	Phillips head modified truss/waferhead self-tapping screw-for starQuick *	#8 x 1	250



Unique product features

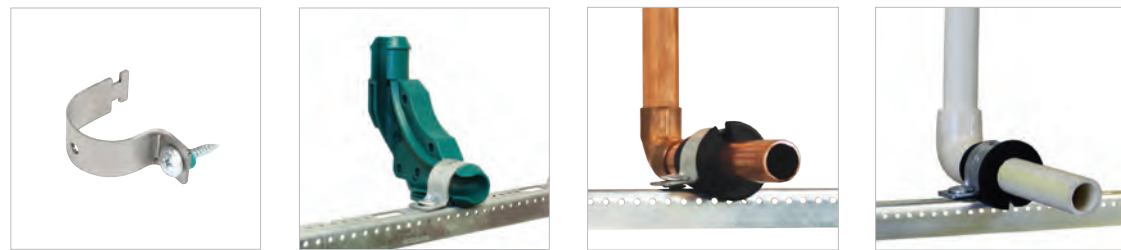
Versatile options



■ Light Angled Wall Bracket (LAWB1) with Rabbit clamp used to secure copper pipe. The Rabbit clamp can be mounted vertically or horizontally.

■ All Angled Wall Brackets have a unique hole pattern that allows stub-outs to be adjustable every 2" (+/- 1/2") (LAWB1 shown).

Installation options



■ Stub-out clamp and bracket for PEX, copper pipe and CPVC can be purchased separately for single water supply installation.



■ The Grommet is a convenient, one-piece product that fits 1/2" and 3/4" pipe and can be used on both wood and metal studs.

■ Rabbit clamps can be used with or without inserts.



Customer support

Whatever your needs, Walraven can provide a solution. We are ready to help, and have up-to-date local knowledge and expertise. Want to know more about how we can support you? Contact us today!

walraven.com/us

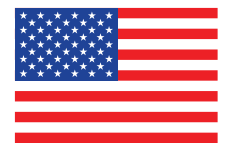
Find out how we can support you

Would you like to find out more about any of the solutions described in this brochure?
Or would you like to discuss how we could help you find the best possible solution for your project? Contact us today!

United States of America

Walraven, Inc.

2605 East Oakley Park Road
Suite B
Walled Lake (Detroit), MI 48390 (US)
Toll free (800) 610 5056
Phone (248) 374 3100
Fax (248) 374 3232
info.us@walraven.com
Email orders to: orders.us@walraven.com



Walraven Group

Mijdrecht (NL) · Tienen (BE) · Bayreuth (DE) · Banbury (GB) · Malmö (SE) · Grenoble (FR) · Barcelona (ES) · Kraków (PL)
Mladá Boleslav (CZ) · Moscow (RU) · Kyiv (UA) · Detroit (US) · Shanghai (CN) · Dubai (AE) · Budapest (HU) · Mumbai (IN)
Singapore (SG)