



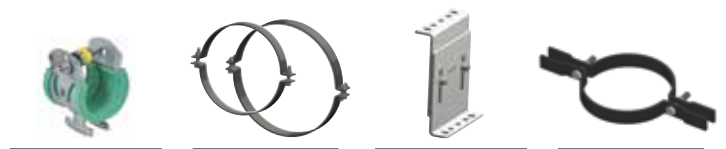
walraven

Engineered solutions that solve installation issues



Walraven PP Pipe Support Solutions

From 20mm to 630mm (1/2" to 24")



The value of smart

walraven.com/us

Inspired by smart solutions from the start

Walraven was established in 1942. Our founder, the great-grandfather of our current CEO, was a plumber and inventor with a love for simple and smart solutions. Now, more than 75 years later, we are a globally active company in the installation industry, still driven to develop simple, yet smart product systems. With our wide product range and expert advice, we can provide complete solutions for any project, no matter how large or complex.

The value of smart

Walraven PP Pipe Support Solutions

From 20mm to 630mm (1/2" to 24")

Polypropylene (PP) pipe is ideal for the distribution of hot and cold water in plumbing, air conditioning systems, drinking water, boiler and chiller units and installations in industrial plants. It lasts longer, is corrosion free, is much lighter and is faster to install than traditional methods with copper or steel piping. Just like PP pipe, Walraven's support products are easy to install and provide an engineered solution for any pipe installation.

Engineered Systems

Walraven's new line of PP Pipe Support Solutions provide an extensive range of engineered products that save time, money and a better and safer installation. Our range supports pipes from 20mm to 630mm in diameter and includes strut clamps, hanging clamps, riser clamps and pads, fix point consoles, expansion guides, threaded rod and pipe reinforcement to cover all of your support needs.

Proper Mounting

Our floor mounted riser clamps have a smooth Plastic coating that prevents PP to slide through, causing more friction than metal on plastic pipe which is the cause of many problems with traditional PP piping installations. Combine the riser clamps with our riser pads for the ultimate sound and vibration dampening.

Expansion and Contraction

PP Pipe Support Solutions must account for expansion and contraction with hot or cold water, something the Walraven solution covers in numerous ways. Walraven's clamps have more than one option to secure your PP pipe: one part, more than one use...now

that's what we call "The value of smart". Take our W5000 and Bifix® 5000 G2 clamps, both ideal for PP piping thanks to their removable spacers. For sliding applications leave the spacer in and for anchored applications simply remove the spacer. We also carry fix point consoles and expansion guides for pipes over 125mm, which can be used together to create an anchor with sliding support in the middle of the pipe for maximum support.

Superior Corrosion Resistance

Walraven PP support products are protected against corrosion and the elements with BIS UltraProtect® 1000 (BUP1000) and our special plastic coating. BUP1000 is a propriety coating that withstands a 1,000 hour salt spray test. Our plastic coated products protect the pipe, increase friction and supply exceptional corrosion resistance.

Efficient and Reliable

Our PP products provide superior quality and ease of installation. Walraven's PP Pipe Support Solutions save time on the jobsite over traditional installation methods since you can pre-fab what you need, making jobsite installation a simple plug and play task. Our engineered methods are reliable and perform at the highest level, giving your customers the quality that they expect.

In conclusion

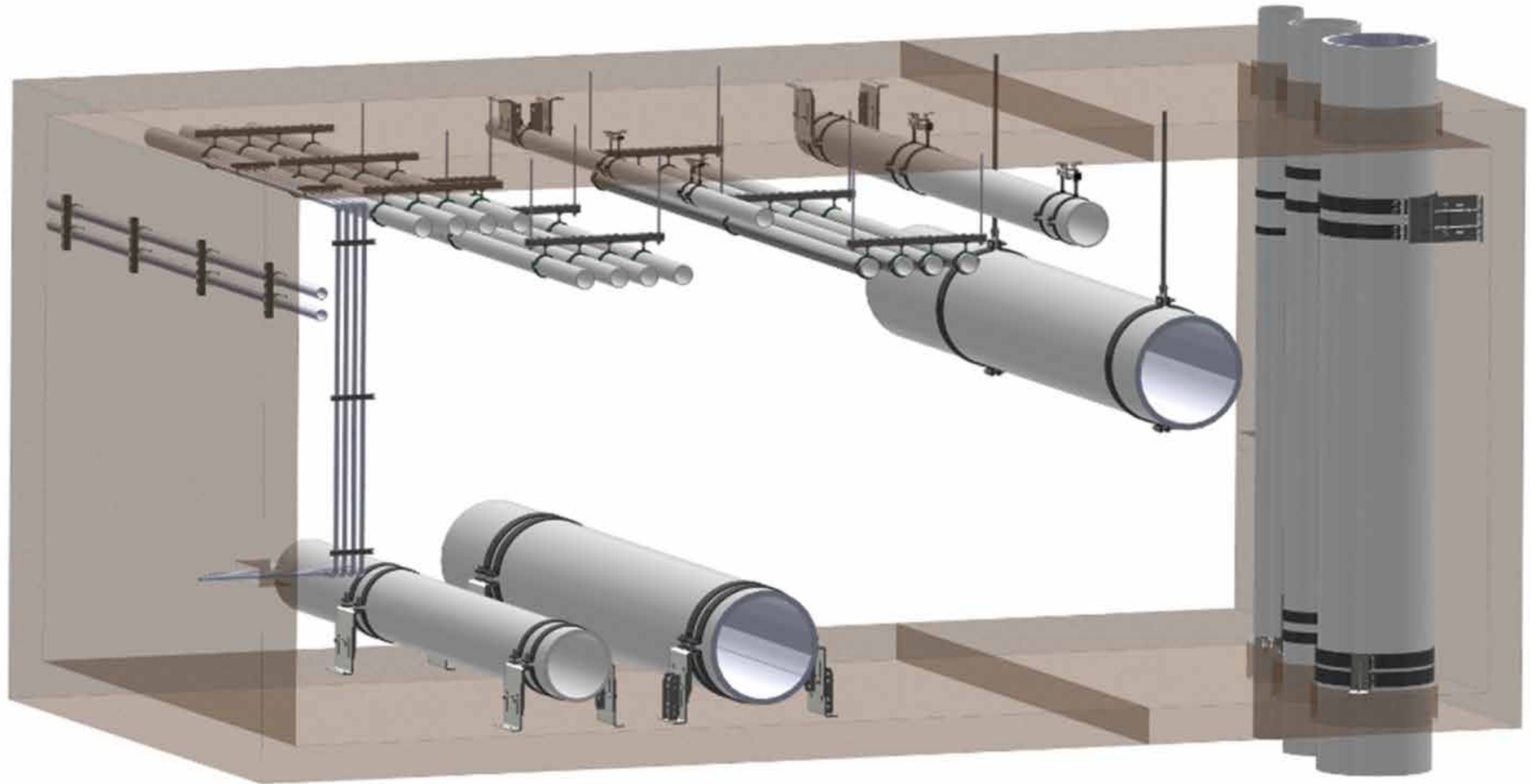
3 reasons for choosing Walraven:

- Engineered solutions to support expansion and contraction
- Corrosion resistant product systems
- Solving current installation issues

Walraven, your partner for smart PP Pipe Support Solutions!

Walraven PP Pipe Support Solutions

Delivering added value through smart solutions

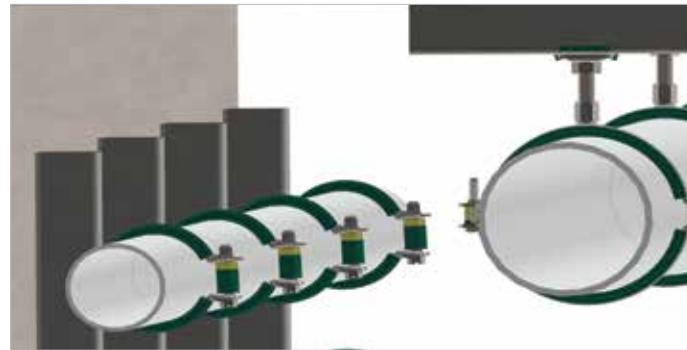


Horizontal Pipe Solutions

20 - 110mm (1/2" - 3-1/2")

starQuick® clamps are the perfect sliding and fixed clamp for light applications. W5000 is the perfect cushion clamp and Bifix® 5000 G2 rubber lined clamps for sliding and fixed application (with spacer - sliding, without spacer - fixed).

Installation solutions



Fixed

- Clamps: Bifix® 5000 G2, W5000 (without spacers) and starQuick®
- Strut: Use with Walraven strut and accessories

Sliding

- Clamps: Bifix® 5000 G2, W5000 (with spacers) and starQuick®
- Strut: Use with Walraven strut and accessories

The right parts for the job

Part No.	Description	Diameter (mm)	Diameter (in)
0854022	starQuick® clamp	20-23	1/2
0854028	starQuick® clamp	24-28	3/4

Part No.	Description	Diameter (mm)	Diameter (in)
2055012	W5000 Cushion clamp	19-22	1/2
2055013	W5000 Cushion clamp	24-25	-
2055016	W5000 Cushion clamp	32-35	1
2055020	W5000 Cushion clamp	40-43	1-1/4
2055023	W5000 Cushion clamp	50-52	1-1/2
2055025	W5000 Cushion clamp	56-58	-
2055026	W5000 Cushion clamp	60-63	2

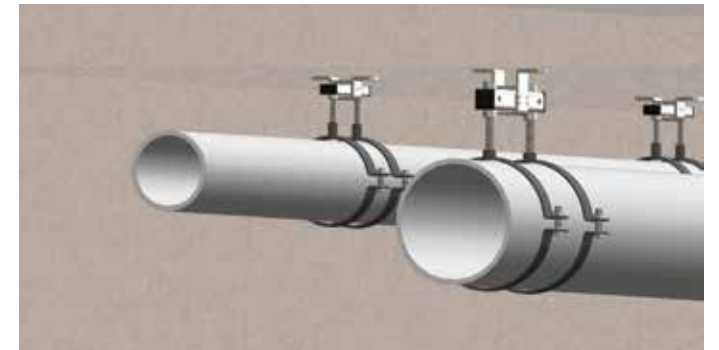
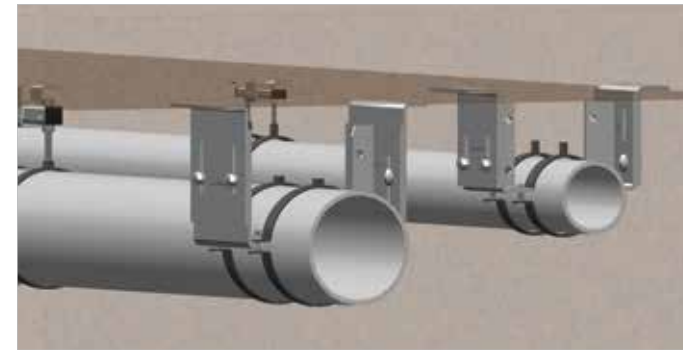
Part No.	Description	Diameter (mm)	Diameter (in)
CR3189023	Bifix® 5000 G2 clamp (BUP1000), 3/8"	20	1/2
CR3189028	Bifix® 5000 G2 clamp (BUP1000), 3/8"	25	3/4
CR3189039	Bifix® 5000 G2 clamp (BUP1000), 3/8"	32	1
CR3189045	Bifix® 5000 G2 clamp (BUP1000), 3/8"	40	1-1/4
CR3189052	Bifix® 5000 G2 clamp (BUP1000), 3/8"	50	1-1/2
CR3189064	Bifix® 5000 G2 clamp (BUP1000), 3/8"	63	2
CR3189079	Bifix® 5000 G2 clamp (BUP1000), 3/8"	75	2-1/2
CR3189105	Bifix® 5000 G2 clamp (BUP1000), 3/8"	90	3
CR3189115	Bifix® 5000 G2 clamp (BUP1000), 3/8"	110	3-1/2

For additional products such as strut and pipe reinforcement, see pages 14 and 15.
CR3189064 replaces CR3489058 and CR3189115 replaces CR3489110, when stock is depleted.

110 - 160mm (3-1/2" - 6")

This range is requiring a stronger solution for sliding applications. Walraven plastic coated HD clamps are mounted on a sliding device or on a fixed console.

Installation solutions



Fixed

- Clamps: HD Clamps
- Mounting: Hammerfix (studded slide nut) or Fix Point Console

Sliding

- Clamps: HD Clamps
- Mounting: Expansion Guide Assembly

The right parts for the job

Part No.	Description	Diameter (mm)	Diameter (in)
33099110	Plastic coated HD clamp with dual nut 3/8"-1/2"	110	3-1/2
33099125	Plastic coated HD clamp with dual nut 3/8"-1/2"	125	4
33099160	Plastic coated HD clamp with dual nut 3/8"-1/2"	160	6

Fixed

Part No.	Description	Diameter (mm)	Diameter (in)
6698210	Fix Point Console, light (BUP1000)	110-200	3-8

Sliding

Part No.	Description	Diameter (mm)	Diameter (in)
6668612	Expansion Guide Assembly (BUP1000)	125-160	4-6

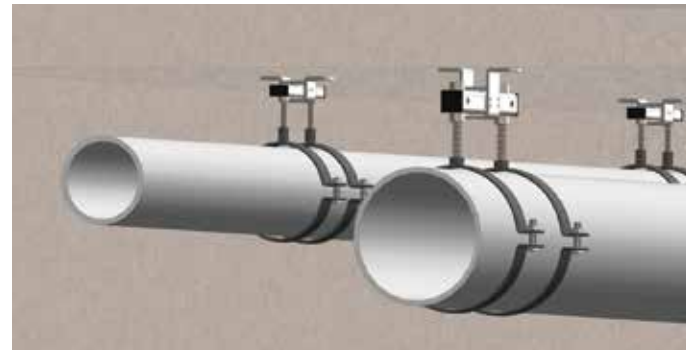
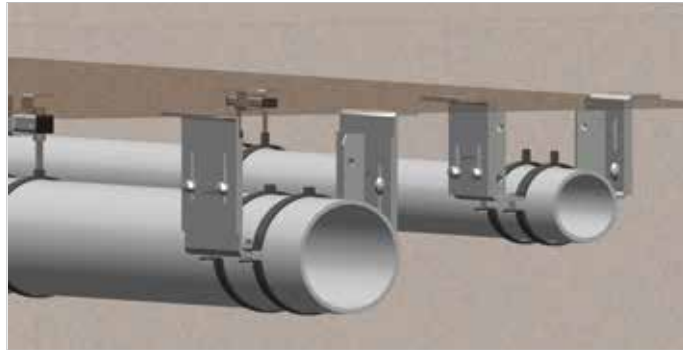
For additional products such as strut and pipe reinforcement, see pages 14 and 15.

Horizontal Pipe Solutions

200 – 315mm (8" – 12")

The larger the pipe the larger the forces requiring engineered sliding and fixed devices. Plastic coated HD clamps are mounted on a sliding device or a fixed console.

Installation solutions



Fixed

- Clamp: HD Clamps
- Mounting: Fix Point Console

Sliding

- Clamp: HD Clamps
- Mounting: Expansion Guide Assembly

The right parts for the job

Part No.	Description	Diameter (mm)	Diameter (in)
33099200	Plastic coated HD clamp with dual nut 3/8"-1/2"	200	8
33099250	Plastic coated HD clamp with dual nut 3/8"-1/2"	250	10
33099315	Plastic coated HD clamp with dual nut 3/8"-1/2"	315	12

Fixed

Part No.	Description	Diameter (mm)	Diameter (in)
6698214	Fix Point Console, medium (BUP1000)	200-355	8-14

Sliding

Part No.	Description	Diameter (mm)	Diameter (in)
6668813	Expansion Guide Assembly (BUP1000) 1/2"	200-315	8-12

355 – 630mm (14" – 24")

Walraven plastic coated two bolt clamps are mounted on fixed consoles. Leave spacers in for sliding application. Remove spacers to form a fixed point.

Installation solutions



Fixed

- Clamp: Split Band Clamps (without spacers)
- Mounting: Fix Point Console

Sliding

- Clamp: Split Band Clamps (with spacers)
- Mounting: Fix Point Console

The right parts for the job

Part No.	Description	Diameter (mm)	Diameter (in)
33109355	Split band clamp set, plastic coated with bolt, nut and spacers	355	14
33109400	Split band clamp set, plastic coated with bolt, nut and spacers	400	16
33109450	Split band clamp set, plastic coated with bolt, nut and spacers	450	18
33109500	Split band clamp set, plastic coated with bolt, nut and spacers	500	20
33109560	Split band clamp set, plastic coated with bolt, nut and spacers	560	12
33109630	Split band clamp set, plastic coated with bolt, nut and spacers	630	24

Fixed and sliding (without or with spacers)

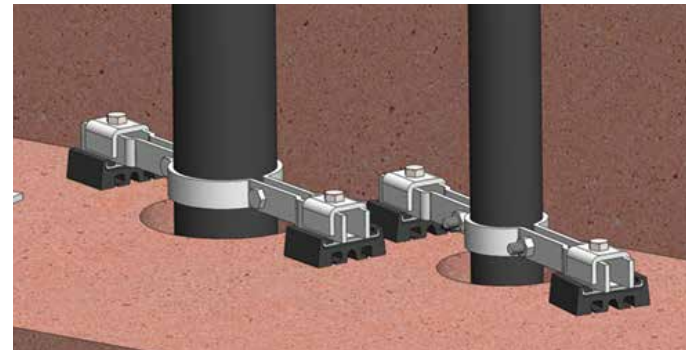
Part No.	Description	Diameter (mm)	Diameter (in)
6698214	Fix Point Console, medium (BUP1000)	200-355	8-14
6698216	Fix Point Console, heavy (BUP1000)	400-630	16-24

Vertical Pipe Solutions

40 - 315mm (1-1/4" - 12")

Walraven line of plastic-coated riser clamps can be bolted directly to the floor. Using a whisper pad raises the riser off the floor and reduces noise. The whisper pad can also be mounted on strut raising the riser to make fire stop and treatment installation easier.

Installation solutions



Clamp

- Floor mounted Riser Clamps bolted directly to concrete (concrete anchor), preventing use of risers on both the floor and ceiling.

Optional

- Whisper Riser Pads mounted to the floor or strut, mounting to strut raises the clamp for easy fire protection installation.

The right parts for the job

Part No.	Description	Diameter (mm)	Diameter (in)
B4989040	Floor mounted riser clamp, plastic coated	40	1-1/4
B4989050	Floor mounted riser clamp, plastic coated	50	1-1/2
B4989063	Floor mounted riser clamp, plastic coated	63	2
B4989075	Floor mounted riser clamp, plastic coated	75	2-1/2
B4989090	Floor mounted riser clamp, plastic coated	90	3
B4989110	Floor mounted riser clamp, plastic coated	110	3-1/2
B4989125	Floor mounted riser clamp, plastic coated	125	4
B4989160	Floor mounted riser clamp, plastic coated	160	6
B4989200	Floor mounted riser clamp, plastic coated	200	8
B4989250	Floor mounted riser clamp, plastic coated	250	10
B4989315	Floor mounted riser clamp, plastic coated	315	12

Coming soon



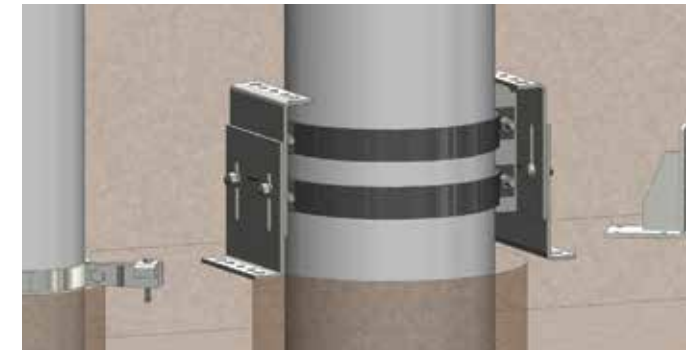
Part No.	Description	Diameter (mm)	Diameter (in)
B4999100	Whisper riser pad set with rubber clad U plate for 40mm material	40-160	1-1/4 - 6
B4999101	Whisper riser pad set with rubber clad U plate for 25mm material	200-315	8-12



110 - 315mm (3-1/2" - 12")

Either Walraven Plastic coated HD clamps or two bolt clamps are mounted on a height adjustable console. The console can be mounted on the floor or the wall.

Installation solutions



Clamp

- HD Clamp

Mounting

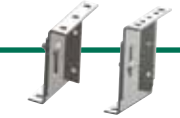
- Fix Point Console anchored to the floor or wall

The right parts for the job

Part No.	Description	Diameter (mm)	Diameter (in)
33099110	Plastic coated HD clamp with dual nut 3/8"-1/2"	110	3-1/2
33099125	Plastic coated HD clamp with dual nut 3/8"-1/2"	125	4
33099160	Plastic coated HD clamp with dual nut 3/8"-1/2"	160	6
33099200	Plastic coated HD clamp with dual nut 3/8"-1/2"	200	8
33099250	Plastic coated HD clamp with dual nut 3/8"-1/2"	250	10
33109315	Plastic coated HD clamp with dual nut 3/8"-1/2"	315	12



Part No.	Description	Diameter (mm)	Diameter (in)
6698210	Fix Point Console, light (BUP1000)	110-200	3-8
6698214	Fix Point Console, medium (BUP1000)	200-355	8-14

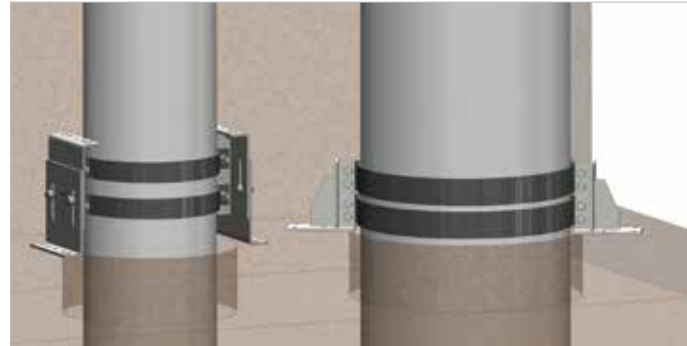


Vertical Pipe Solutions

355 – 630mm (14" – 24")

Walraven plastic coated two bolt clamps (without spacers) are mounted on fixed consoles.

Installation solutions




Clamp


- Split Band Clamps

Mounting

- Fix Point Console anchored to the floor or wall (Part No. 6698214 and 6698216 adjustable height. Part No. 6698218 fixed height)

The right parts for the job

Part No.	Description	Diameter (mm)	Diameter (in)	
33109355		Split band clamp set, plastic coated with bolt, nut and spacers	355	14
33109400		Split band clamp set, plastic coated with bolt, nut and spacers	400	16
33109450		Split band clamp set, plastic coated with bolt, nut and spacers	450	18
33109500		Split band clamp set, plastic coated with bolt, nut and spacers	500	20
33109560		Split band clamp set, plastic coated with bolt, nut and spacers	560	22
33109630		Split band clamp set, plastic coated with bolt, nut and spacers	630	24

Part No.	Description	Diameter (mm)	Diameter (in)	
6698214		Fix Point Console, medium (BUP1000)	200-355	8-14
6698216		Fix Point Console, heavy (BUP1000)	400-630	16-24
6698218		Riser clamp console set (BUP1000)	315-630	12-24

Customer support

Whatever your needs, Walraven can provide a solution. We are ready to help, and have up-to-date local knowledge and expertise. Want to know more about how we can support you? Contact us today!

walraven.com/us

Additional Products

To complete the job

Pipe Reinforcement

Self-gripping and continuous support for plastic pipe that prevents bending and snaking, allows for longer distance between supports and can provide a Plenum rating.

Part No.	Description	Diameter (mm)	Diameter (in)
PRM020	Pipe Reinforcement	20	1/2
PRM025	Pipe Reinforcement	25	3/4
PRM032	Pipe Reinforcement	32	1
PRM040	Pipe Reinforcement	40	1-1/4
PRM050	Pipe Reinforcement	50	1-1/2
PRM063	Pipe Reinforcement	63	2
PRM075	Pipe Reinforcement	75	2-1/2
PRM090	Pipe Reinforcement	90	3
PRM110	Pipe Reinforcement	110	3-1/2
PRM125	Pipe Reinforcement	125	4
PRM160	Pipe Reinforcement	160	6
PRM200	Pipe Reinforcement	200	8
PRM250	Pipe Reinforcement	250	10
PRM315	Pipe Reinforcement	315	12

Strut

Walraven RapidStrut® makes for quick and easy support with a unique hole pattern that allows RapidStrut® Hammerfix (studded slide nut) and RapidStrut® Slide Nuts that can be mounted to both sides of the strut.

Part No.	Descriptions	Length (in)	Size (in)
65058352	RapidStrut® Fixing Rail DS 5 (BUP1000)	120	1-5/8 x 2 x 14ga

Medium Strut

RapidRail® is Walraven's unique lightweight alternative to traditional strut that is easier to install, store and transport with fast-fit accessories that can be mounted to both sides of the strut.

Part No.	Description	Length (in)	Size (in)
65059502	RapidRail® Fixing Rail WM15	10	1-3/16 x 3/4 x 16ga
65059505	RapidRail® Fixing Rail WM15	20	1-3/16 x 3/4 x 16ga
65059510	RapidRail® Fixing Rail WM15	39	1-3/16 x 3/4 x 16ga
6505015	RapidRail® Fixing Rail WM15	78	1-3/16 x 3/4 x 16ga

Light Strut

Multi-Purpose Hanging Strut (MPHS) is adjustable strut that has pre-punched holes that fit 3/8" threaded rod, self-tapping screws and stub-outs.

Part No.	Description	Expansion range (in)
650509922	Multi-Purpose Hanging Strut (MPHS1)	12-20
650509923	Multi-Purpose Hanging Strut (MPHS2)	22-30
650509924	Multi-Purpose Hanging Strut (MPHS3)	32-40

Studded Slide Nut

One-piece studded slide nut that replaces spring nut, bolt and threaded rod: simply slide into strut, lock with a 1/4 turn and attach clamps.

Part No.	Description	Length of Threaded Rod (in)
SR6528005	RapidStrut® Hammerfix G2 (BUP1000) for strut	1/2
SR6528007	RapidStrut® Hammerfix G2 (BUP1000) for strut	2
SR6528011	RapidStrut® Hammerfix G2 (BUP1000) for strut	3
SR6528016	RapidStrut® Hammerfix G2 (BUP1000) for strut	5

Part No.	Description	Length of Threaded Rod (in)
RR6523902	RapidRail® Hammerfix, for medium and light strut	1
RR6523908	RapidRail® Hammerfix, for medium and light strut	2-1/2
RR6523910	RapidRail® Hammerfix, for medium and light strut	3-1/2
RR6523916	RapidRail® Hammerfix, for medium and light strut	5-1/2

Suspension Eyes

Easily adjust the height of HD Clamps and Split Band Clamps mounted on threaded rod.

Part No.	Description	Diameter (mm)	Diameter (in)
6773027	Suspension Eye (height adjustability) for split band clips	355-450	14-18
6773333	Suspension eye (height adjustability) for split band clips	500-630	20-24

*Making your job easier:
The value of smart*

Find out how we can support you

Would you like to find out more about any of the solutions described in this brochure?
Or would you like to discuss how we could help you find the best possible solution for your project? Contact us today!

United States of America Canada

Walraven, Inc.

2605 East Oakley Park Road
Suite B
Walled Lake (Detroit), MI 48390 (US)
Toll free (800) 610 5056
Phone (248) 374 3100
Fax (248) 374 3232
info.us@walraven.com
Email orders to: orders.us@walraven.com



Walraven Group

Mijdrecht (NL) · Tienen (BE) · Bayreuth (DE) · Banbury (GB) · Malmö (SE) · Grenoble (FR) · Barcelona (ES) · Kraków (PL)
Mladá Boleslav (CZ) · Moscow (RU) · Kyiv (UA) · Detroit (US) · Shanghai (CN) · Dubai (AE) · Budapest (HU) · Mumbai (IN)
Singapore (SG)