

WNP Nail Plug

Easy to install hammer-set anchor

Anchor Types



WNP 5x30
WNP 6x40
WNP 6x60
WNP 8x60
WNP 8x80
WNP 8x100

Features and Benefits

- Long expansion zone provides stability
- Quick and easy to install
- Can be adjusted or dismantled
- Pre-assembled
- Through fixing
- Material: high quality PA6 polyamide, zinc plated steel

Suitable base materials

- Concrete
- Masonry
- Sand-lime bricks
- Natural stone
- Hollow masonry
- Rock

Typical Applications

- Skirtings
- Cable clamps
- Profiles
- Cabinets

Product Details

| Article | Description | Diameter | Length |
|----------|-------------|----------|--------|
| | | d [mm] | L [mm] |
| 62230503 | WNP 5x30 | 5 | 30 |
| 62230604 | WNP 6x40 | 6 | 40 |
| 62230606 | WNP 6x60 | 6 | 60 |
| 62230806 | WNP 8x60 | 8 | 60 |
| 62230808 | WNP 8x80 | 8 | 80 |
| 62230810 | WNP 8x100 | 8 | 100 |

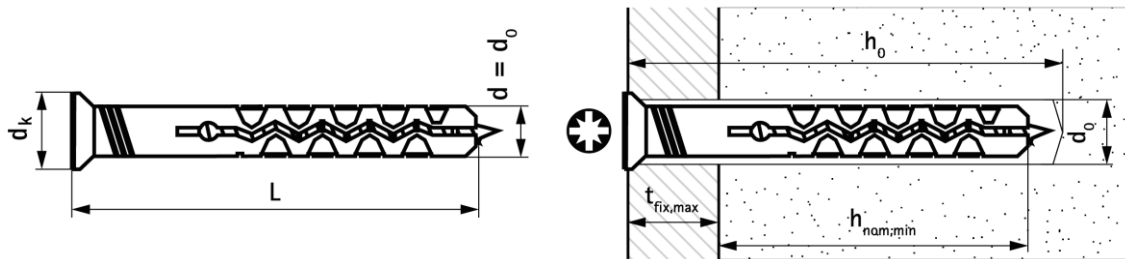
Packaging Details

| Article | Description | Pack 1 | | Pack 2 | |
|----------|-------------|--------|---------------|--------|---------------|
| | | [pcs] | EAN13 | [pcs] | EAN13 |
| 62230503 | WNP 5x30 | 100 | 8712993550692 | 2400 | 8712993550708 |
| 62230604 | WNP 6x40 | 100 | 8712993265077 | 1800 | 8712993265084 |
| 62230606 | WNP 6x60 | 100 | 8712993265107 | 1200 | 8712993265114 |
| 62230806 | WNP 8x60 | 100 | 8712993265138 | 900 | 8712993265145 |
| 62230808 | WNP 8x80 | 100 | 8712993265169 | 600 | 8712993265176 |
| 62230810 | WNP 8x100 | 100 | 8712993265190 | 600 | 8712993265206 |

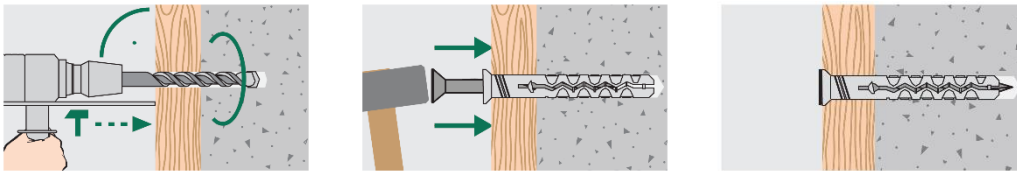
Setting Details

| Anchor Size | | | 5x30 | 6x40 | 6x60 | 8x60 | 8x80 | 8x100 |
|-------------------------|---------------|------|------|------|------|------|------|-------|
| Length | L | [mm] | 30 | 40 | 60 | 60 | 80 | 100 |
| Drill hole diameter | d_0 | [mm] | 5 | 6 | 6 | 8 | 8 | 8 |
| Drill hole depth* | h_0 | [mm] | 40 | 50 | 70 | 70 | 90 | 110 |
| Minimum anchorage depth | $h_{nom,min}$ | [mm] | 25 | 30 | 30 | 40 | 40 | 40 |
| Drive | | [-] | PZ2 | | | | | |
| Collar diameter | d_k | [mm] | 7 | 9 | 9 | 12 | 12 | 12 |
| Max. fixture thickness | $t_{fix,max}$ | [mm] | 5 | 10 | 30 | 20 | 40 | 60 |

*for through fixing



Installation Instructions



Loading Data

Loading data is presented for single anchors.

Characteristic loads

| Anchor Size | | | 5x30 | 6x40 | 6x60 | 8x60 | 8x80 | 8x100 |
|-----------------|----------|------|------|------|------|------|------|-------|
| C20/25 concrete | N_{rk} | [kN] | 1.25 | 1.50 | 1.50 | 2.00 | 2.00 | 2.00 |
| Brick | N_{rk} | [kN] | 1.00 | 1.25 | 1.25 | 1.50 | 1.50 | 1.50 |
| Sandstone | N_{rk} | [kN] | 0.75 | 1.00 | 1.00 | 1.25 | 1.25 | 1.25 |

Recommended loads

| Anchor Size | | | 5x30 | 6x40 | 6x60 | 8x60 | 8x80 | 8x100 |
|-----------------|-----------|------|------|------|------|------|------|-------|
| C20/25 concrete | N_{rec} | [kN] | 0.25 | 0.30 | 0.30 | 0.40 | 0.40 | 0.40 |
| Brick | N_{rec} | [kN] | 0.20 | 0.25 | 0.25 | 0.30 | 0.30 | 0.30 |
| Sandstone | N_{rec} | [kN] | 0.15 | 0.20 | 0.20 | 0.25 | 0.25 | 0.25 |

Given recommended tension loads include a safety factor of 5.