

# WEP Expansion Plug

Economical expansion anchor for all types of substrates

## Anchor Types



WEP 5x25  
WEP 6x30  
WEP 8x40  
WEP 10x50  
WEP 12x60  
WEP 14x70

## Features and Benefits

- Can be used with wood screws, chipboard screws and metric bolts
- Suitable for variety of substrates
- Does not expand prematurely
- Resists rotation in holes
- Material: high quality PA6 polyamide

## Suitable base materials

- Concrete
- Masonry
- Lightweight concrete
- Sand-lime bricks
- Natural stone
- Gypsum
- Hollow masonry
- Rock

## Typical Applications

- Shelves
- Wall-mounted cabinets
- Sanitary fixings
- HVAC and plumbing fixings

## Product Details

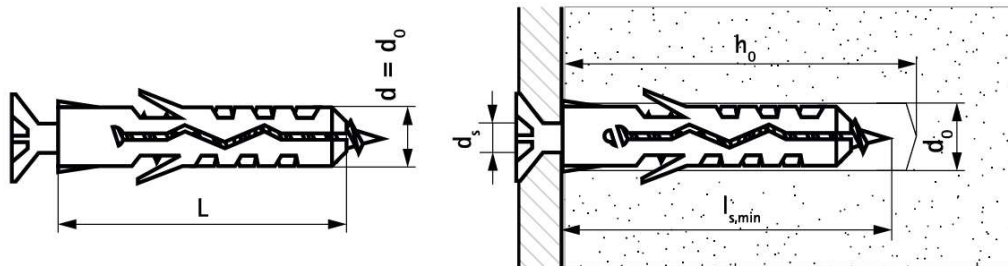
Article	Description	Diameter	Length
		d [mm]	L [mm]
61001005	WEP 5x25	5	25
61001006	WEP 6x30	6	30
61001008	WEP 8x40	8	40
61001010	WEP 10x50	10	50
61001012	WEP 12x60	12	60
61001014	WEP 14x70	14	70

## Packaging Details

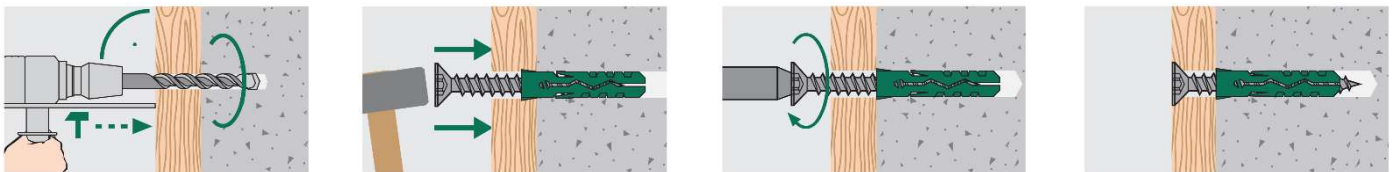
Article	Description	Pack 1		Pack 2	
		[pcs]	EAN13	[pcs]	EAN13
61001005	WEP 5x25	100	8712993265220	3600	8712993265237
61001006	WEP 6x30	100	8712993265268	3600	8712993265282
61001008	WEP 8x40	100	8712993265329	3600	8712993265343
61001010	WEP 10x50	50	8712993265466	1800	8712993265589
61001012	WEP 12x60	25	8712993265602	900	8712993265619
61001014	WEP 14x70	20	8712993267002	720	8712993267019

### Setting Details

Anchor Size			5x25	6x30	8x40	10x50	12x60	14x70
Length	L	[mm]	25	30	40	50	60	70
Drill hole diameter	$d_o$	[mm]	5	6	8	10	12	14
Drill hole depth	$h_o$	[mm]	35	40	55	65	80	90
Nominal anchorage depth	$h_{nom}$	[mm]	25	30	40	50	60	70
Screw diameter wood/ chipboard	$d_s$	[mm]	2.6-4	3.5-5	4.5-6	6-8	8-10	10-12
Screw diameter metric	$d_s$	[mm]	M3	M4	M5	M6	M8	M10
Min. screwing depth	$l_{s,min}$	[mm]	29	34	44	54	64	74
Max. fixture thickness	$t_{fix,max}$	[mm]	based on screw length					



### Installation Instructions



### Loading Data

Loading data is presented for single anchors installed with maximum diameter wood screw.

#### Characteristic loads

Anchor Size			5x25	6x30	8x40	10x50	12x60	14x70
C20/25 concrete	$N_{rk}$	[kN]	1.75	3.00	4.25	7.00	9.00	13.00
Brick	$N_{rk}$	[kN]	1.00	2.00	3.00	4.00	5.00	6.50
Lightweight concrete	$N_{rk}$	[kN]	0.20	0.30	0.45	1.00	2.00	2.50

#### Recommended loads

Anchor Size			5x25	6x30	8x40	10x50	12x60	14x70
C20/25 concrete	$N_{rec}$	[kN]	0.35	0.60	0.85	1.40	1.80	2.60
Brick	$N_{rec}$	[kN]	0.20	0.40	0.60	0.80	1.00	1.30
Lightweight concrete	$N_{rec}$	[kN]	0.04	0.06	0.09	0.20	0.40	0.50

Given recommended tension loads include a safety factor of 5.