

WCP Cavity Plug

Metal anchor with screw for cavity walls

Anchor Types



WCP 4x35
WCP 5x37
WCP 5x50
WCP 6x37
WCP 6x63

Features and Benefits

- High load capacity and security
- Usable with various screwdriver bit types
- Material: zinc plated steel

Suitable base materials

- Plasterboard
- Chipboard
- Hollow masonry

Typical Applications

- Shelves
- Wall-mounted cabinets
- Sanitary fixings
- HVAC and plumbing fixings



Product Details

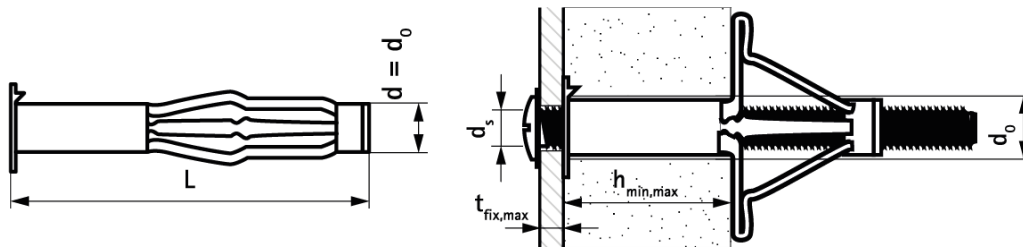
Article	Description	Diameter	Length
		d [mm]	L [mm]
6105400	WCP 4x35	4	35
6105501	WCP 5x37	5	37
6105502	WCP 5x50	5	50
6105601	WCP 6x37	6	37
6105603	WCP 6x63	6	63

Packaging Details

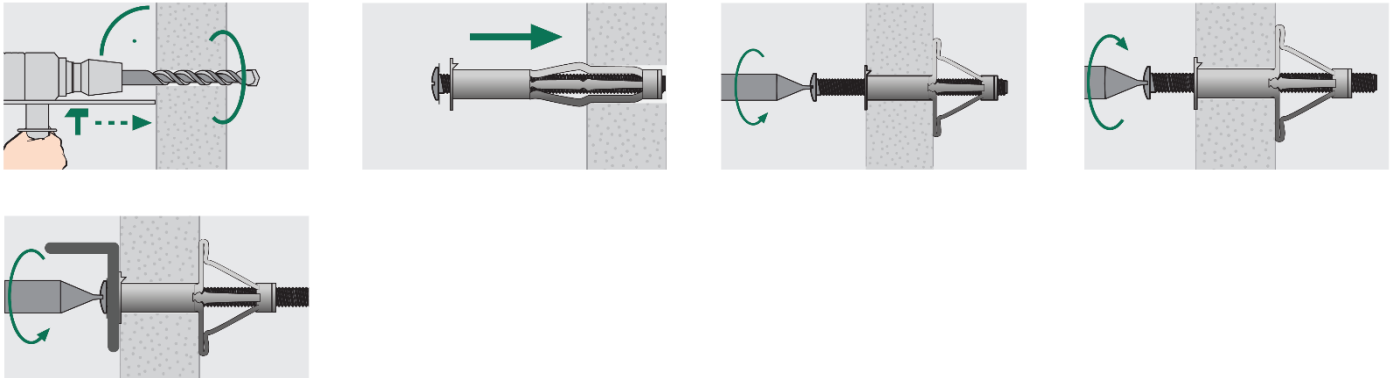
Article	Description	Pack 1		Pack 2	
		[pcs]	EAN13	[pcs]	EAN13
6105400	WCP 4x35	100	8712993267040	1200	8712993267064
6105501	WCP 5x37	100	8712993267095	1200	8712993267101
6105502	WCP 5x50	100	8712993267125	900	8712993267132
6105601	WCP 6x37	100	8712993267224	900	8712993267231
6105603	WCP 6x63	100	8712993267279	300	8712993267286

Setting Details

Anchor Size			4x35	5x37	5x50	6x37	6x63
Anchor length	L	[mm]	35	37	50	37	63
Drill hole diameter	d_o	[mm]	8	10	10	12	12
Screw diameter metric	d_s	[mm]	M4	M5	M5	M6	M6
Screw length	l_s	[mm]	45	45	60	45	75
Drive		[-]	Philips				
Substrate thickness	$h_{min,max}$	[mm]	4-9	5-13	5-18	4-13	16-32
Max fixture thickness	$t_{fix,max}$	[mm]	16	20	26	16	28



Installation Instructions



Loading Data

Loading data is presented for single anchors.

Characteristic loads

Anchor Size			4x35	5x37	5x50	6x37	6x63
Plasterboard (h=12.5mm)	N_{rk}	[kN]	0.45	0.54	0.54	0.60	0.60
Chipboard (h=13mm)	N_{rk}	[kN]	0.60	0.75	0.75	0.84	0.84
Cement fibreboard (h=12mm)	N_{rk}	[kN]	1.05	1.20	1.20	1.26	1.26
Vertically perforated brick (Hlz 12)	N_{rk}	[kN]	-	-	-	2.10	2.10

Recommended loads

Anchor Size			4x35	5x37	5x50	6x37	6x63
Plasterboard (h=12.5mm)	N_{rec}	[kN]	0.15	0.18	0.18	0.20	0.20
Chipboard (h=13mm)	N_{rec}	[kN]	0.20	0.25	0.25	0.28	0.28
Cement fibreboard (h=12mm)	N_{rec}	[kN]	0.35	0.40	0.40	0.42	0.42
Vertically perforated brick (Hlz 12)	N_{rec}	[kN]	-	-	-	0.70	0.70

Given recommended tension loads include a safety factor of 3.