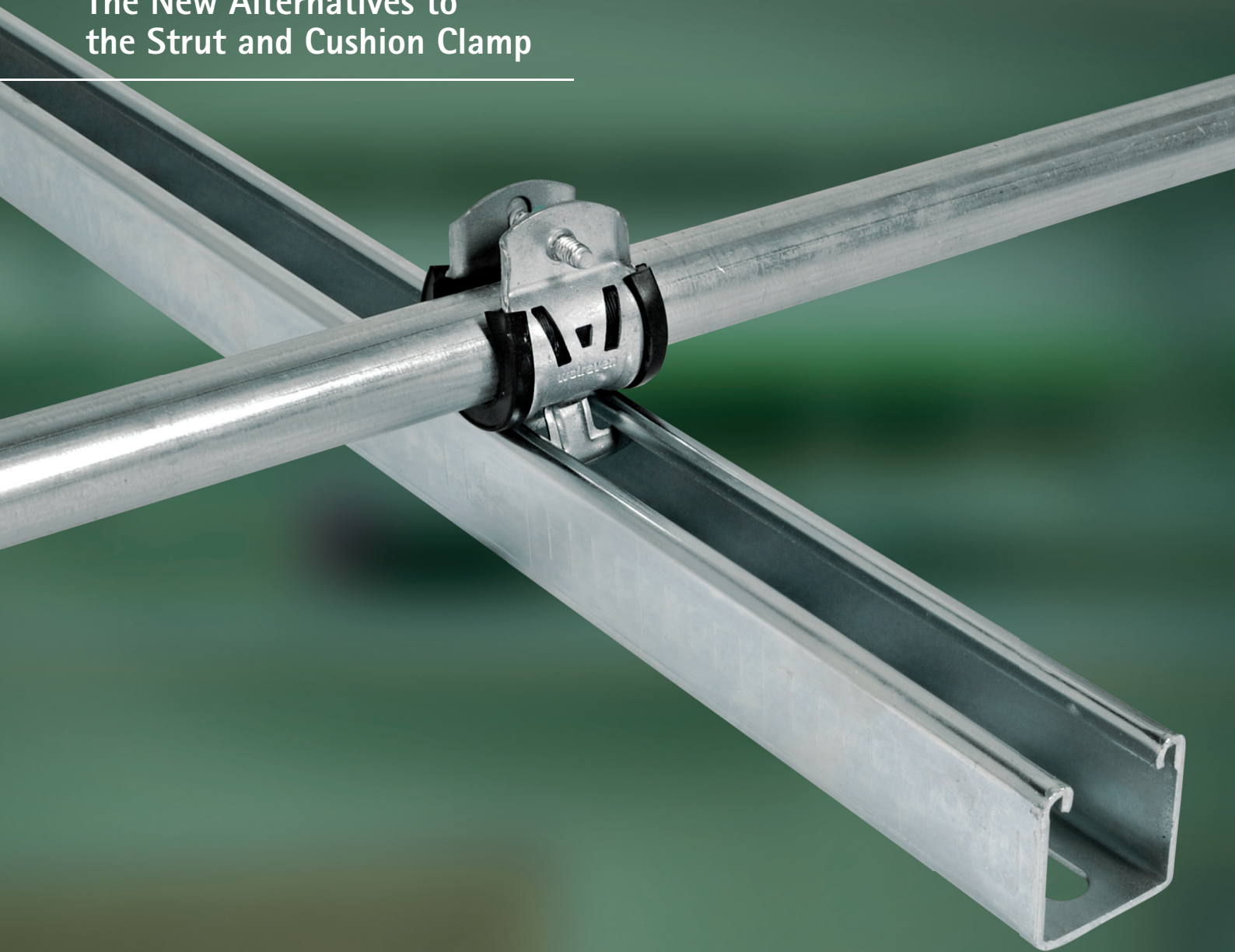


The New Alternatives to
the Strut and Cushion Clamp



The W Series

Simplicity. Reinvented.



Rubber lined

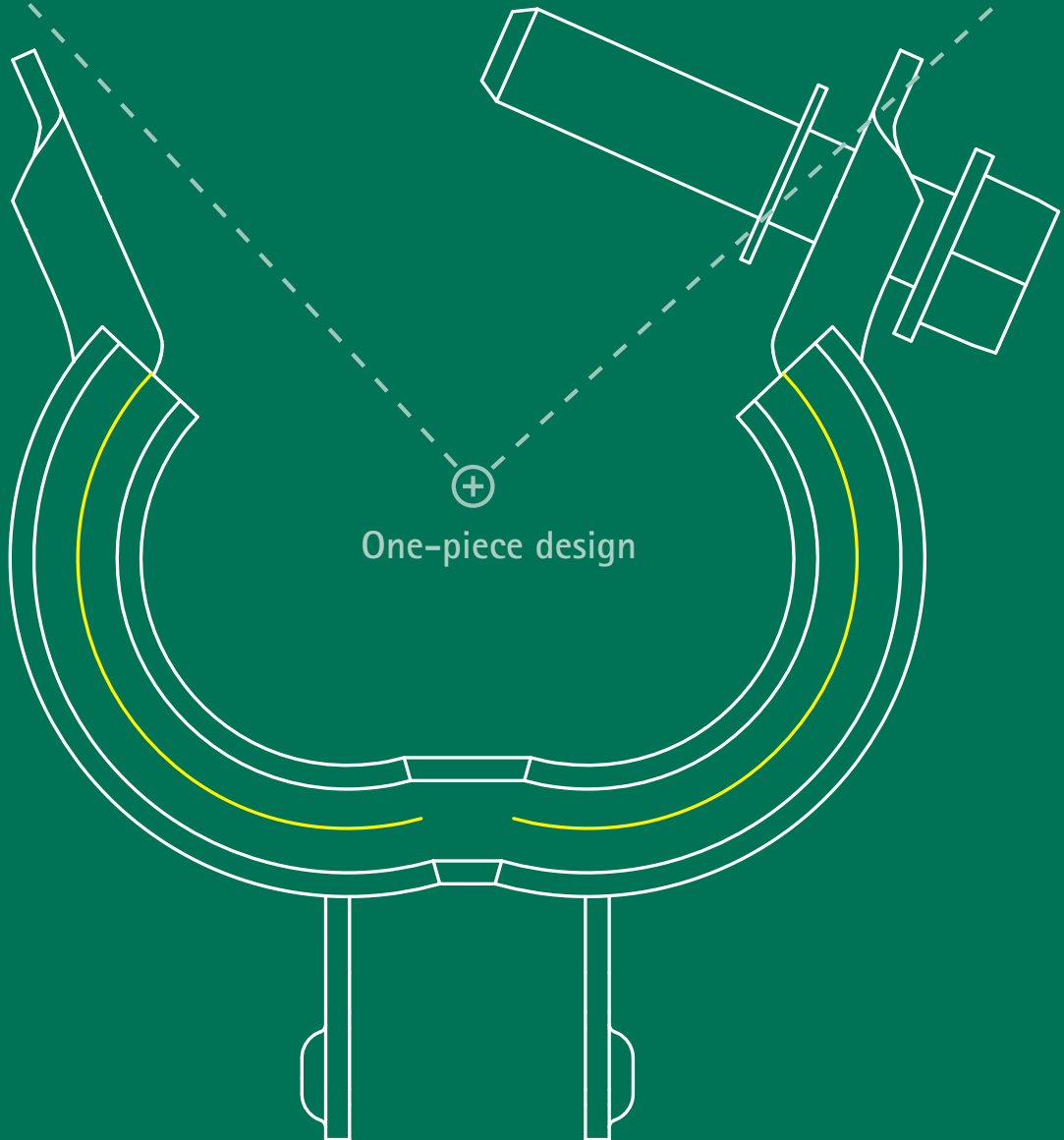
3-way screw head

One-piece design

Boxed for
easy handling

W Strut Clamp

Installs with one hand



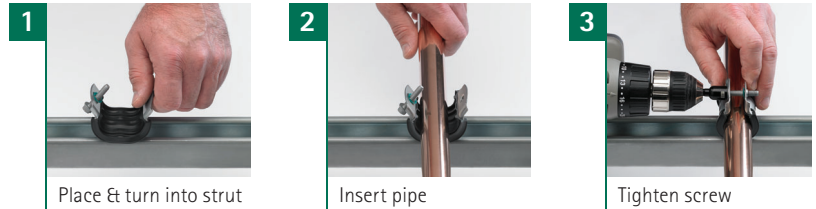
Simply smarter

Introducing the W Series Clamps from Walraven

The W Series Clamps are the latest, revolutionary way to mount pipes to strut. One size can fit multiple pipes, reducing the types of clamps needed to complete a project. Its patented one-piece design and durability allows installers to prefabricate a job, saving time and labor costs in the process.

Simply stated – the W Series Clamps make any installation project easier, safer and more affordable!

Revolutionizing the installation process: easy as 1–2–3



W1000 Strut Clamp

To be used with steel pipes and EMT conduit



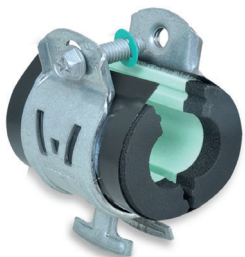
W2000 Cushion Clamp

To be used for metal pipe applications



W5000 Cushion Clamp

To be used for plastic pipe applications



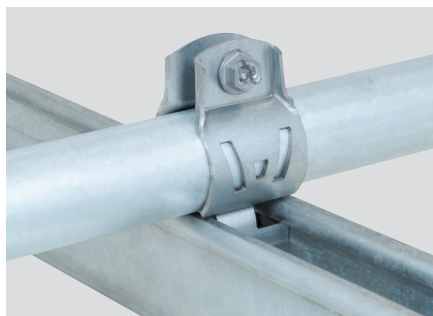
W6000 Insulated Clamp

To be used with pipes that need to be insulated

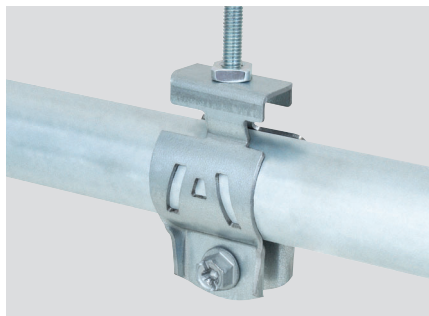
W1000 Strut Clamp

To be used with steel pipes and EMT conduit

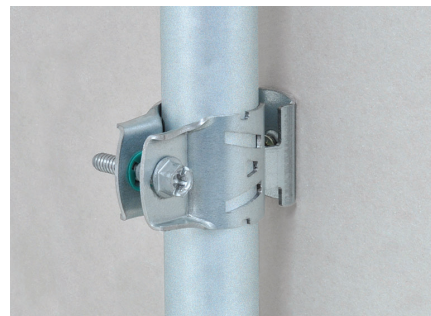
The W1000 Strut Clamp replaces three ordinary clamps!



Use with strut channel, like a standard strut clamp



Suspend from threaded rod, like a clevis/loop hanger



Mount directly on the wall, like a conduit clamp

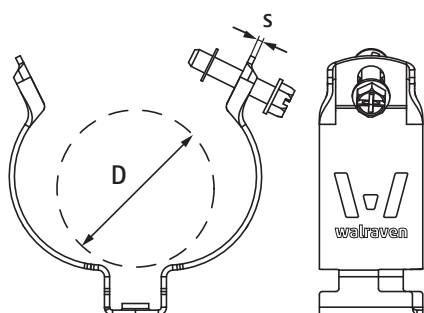


- The new alternative to the standard Strut Clamp
- 3-way use, on strut, on threaded rod, directly on wall or ceiling
- One-piece design - no loose parts
- Easier, faster, safer - installs with one hand
- 3-way screw head - Phillips, flat and hex
- Unique design allows one clamp to fit multiple pipe sizes - less items to stock
- W Series Clamps are boxed for easy handling - no more bags
- Surface treatment: high grade Zn-Mg based coating (600 hours salt spray)

Test Reports:

- **Strength**
2017-TR15XXXX-VX

* For additional testing information, please contact our Sales Office!



Part No.	D (mm)	D / IPS (")	D / EMT (")	s (mm)	Screw (")	Fa,z (N)	Pack 1
2015021	18-21	1/2	1/2	1.25	1/4	890	50
2015027	23-27	3/4	3/4	1.25	1/4	890	50
2015033	29-33	1	1	1.25	1/4	980	25
2015042	38-42	1 1/4	1 1/4	1.25	1/4	980	25
2015048	44-48	1 1/2	1 1/2	1.50	1/4	1,780	25
2015060	56-60	2	2	1.50	1/4	1,780	25

W2000 Cushion Clamp

To be used for metal pipe applications

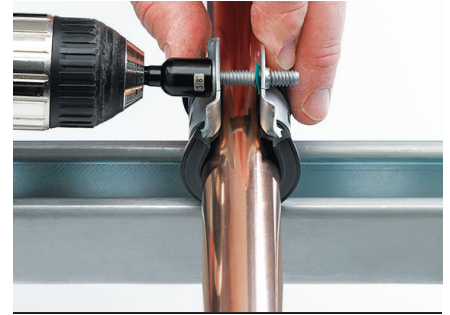
W Series Clamps are revolutionizing the installation process: easy as 1-2-3



1. Place and turn into strut



2. Insert pipe



3. Tighten screw



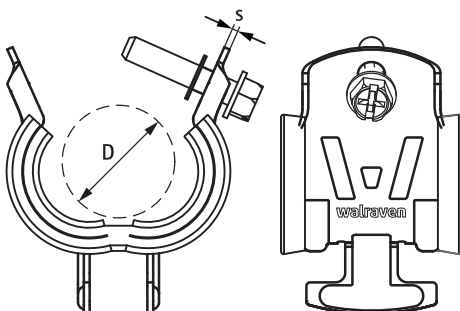
- The new alternative to the Cushion Clamp
- One-piece design – no loose parts
- Easier, faster, safer – installs with one hand
- 3-way screw head – Phillips, flat and hex
- Black EPDM rubber lining protects against galvanic corrosion
- Noise/vibration insulating lining
- Unique design allows one clamp to fit multiple pipe sizes – less items to stock
- W Strut Clamps are boxed for easy handling – no more bags
- Surface treatment: high grade Zn-Mg based coating (600 hours salt spray)
- Age resistant lining

Test Reports:

- Strength, fire and smoke
UL 1565 Listed
- Noise emission
2016-SG-Bauakustik-1647-001-16



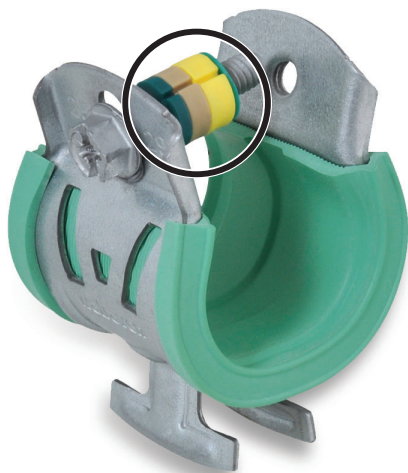
* For additional testing information, please contact our Sales Office!



Part No.	D (mm)	D / CTS (")	D / ACR (")	D / IPS (")	s (mm)	Screw (")	Fa,z (N)	Pack 1
2025004	9-10	1/4	3/8	-	1.25	1/4	890	50
2025006	11-13	3/8	1/2	-	1.25	1/4	890	50
2025008	14-16	1/2	5/8	1/4	1.25	1/4	890	50
2025010	17-19	5/8	3/4	3/8	1.25	1/4	980	50
2025012	20-22	3/4	7/8	1/2	1.25	1/4	980	50
2025014	25-29	1	1 1/8	3/4	1.50	1/4	1,780	50
2025016	32-35	1 1/4	1 3/8	1	1.50	1/4	1,780	50
2025020	40-43	1 1/2	1 5/8	1 1/4	1.75	5/16	1,780	25
2025022	48-50	-	-	1 1/2	1.75	5/16	1,780	25
2025024	54-56	2	2 1/8	-	1.75	5/16	1,780	25
2025026	60-63	-	-	2	1.75	5/16	1,780	25

W5000 Cushion Clamp

To be used for plastic pipe applications



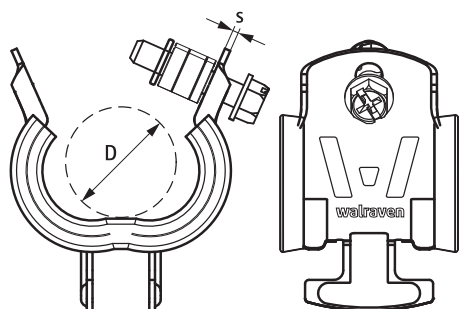
- The new alternative to the Cushion Clamp
- One-piece design – no loose parts
- Easier, faster, safer – installs with one hand
- 3-way screw head – Phillips, flat and hex
- Removable spacer washers making this clamp suitable for either sliding or anchoring
- Green EPDM rubber lining will prevent plasticiser migration
- Noise/vibration insulating lining according DIN EN ISO 3822-1
- W Strut Clamps are boxed for easy handling – no more bags
- Surface treatment: high grade Zn-Mg based coating (600 hours salt spray)
- Age resistant lining

Test Reports:

- **Strength, fire and smoke**
UL 1565 Listed
- **Plasticizer migration behaviour**
2016-TR151002-V5
- **Noise emission**
2016-SG-Bauakustik-1647-001-16



* For additional testing information, please contact our Sales Office!



Part No.	D (mm)	D / CTS (")	D / IPS (")	s (mm)	Screw (")	Fa,z (N)	Pack 1
2055007	12-13	3/8	-	1.25	1/4	890	50
2055008	14-15	-	1/4	1.25	1/4	890	50
2055009	15-16	1/2	-	1.25	1/4	890	50
2055010	17-18	-	3/8	1.25	1/4	980	50
2055012	19-22	5/8-3/4	1/2	1.25	1/4	980	50
2055013	24-25	-	-	1.50	1/4	1,780	50
2055014	26-29	1	3/4	1.50	1/4	1,780	50
2055016	32-35	1 1/4	1	1.50	1/4	1,780	50
2055020	40-43	1 1/2	1 1/4	1.75	5/16	1,780	25
2055022	47-49	-	1 1/2	1.75	5/16	1,780	25
2055023	50-52	-	-	1.75	5/16	1,780	25
2055024	53-54	2	-	1.75	5/16	1,780	25
2055025	56-58	-	-	1.75	5/16	1,780	25
2055026	60-63	-	2	1.75	5/16	1,780	25

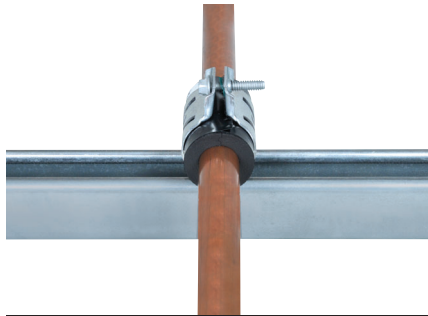
W6000 Insulated Clamp

To be used with pipes that need to be insulated

A revolutionizing clamp with an integrated thermal insulation block!



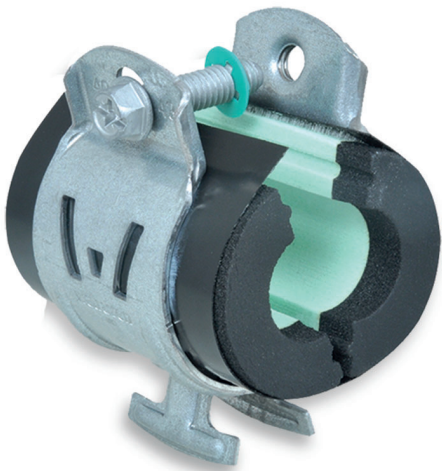
1. Place and turn into strut



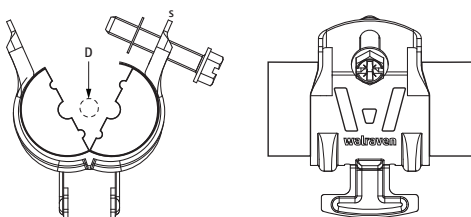
2. Insert pipe and close



3. Place thermal insulation on pipe



- The new alternative to the Strut Clamp
- One-piece design – no loose parts
- Easier, faster, safer – installs with one hand
- 3-way screw head – Phillips, flat and hex
- For installation of thermal isolated steel, copper, stainless steel or plastic pipe
- Available with 3/8" or 1/2" integrated thermal insulation block
- To be used in combination with soft insulation material
- Vapor-proof gluing to pipe insulation
- Excellent thermal and mechanical properties
- Materials: Clamp: Steel, Insulation shell: PIR thermally hardening foam (core), synthetic rubber (sides), and vapor-proof layer of black PVC
- W Strut Clamps are boxed for easy handling – no more bags
- Surface treatment: high grade Zn-Mg based coating (600 hours salt spray)



Part No. 3/8" block	Part No. 1/2" block	D (mm)	D / CTS (")	D / ACR (")	Fa,z (N)	Pack 1
2061006	2062006	6-7	-	1/4	160	25
2061010	2062010	9-10	1/4	3/8	160	25
2061013	2062013	11-13	3/8	1/2	300	25
2061016	2062016	14-16	1/2	5/8	300	25
2061019	2062019	17-19	5/8	3/4	400	25
2061022	2062022	20-22	3/4	7/8	400	25
2061029	2062029	25-29	1	1 1/8	700	25
2061035	2062035	32-35	1 1/4	1 3/8	700	25
2061041	2062041	40-43	1 1/2	1 5/8	1,000	25

Find out how we can support you

Would you like to find out more about any of the solutions described in this brochure?

Or would you like to discuss how we could help you find the best possible solution for your project? Get in touch today!

Other countries

Walraven International

Industrieweg 5
3641 RK Mijdrecht (NL)
Tel. +31 297 23 30 00
Fax +31 297 23 30 99
export@walraven.com

Walraven Group

Mijdrecht (NL) · Tienen (BE) · Bayreuth (DE) · Banbury (GB) · Malmö (SE) · Grenoble (FR) · Barcelona (ES) · Kraków (PL)
Mladá Boleslav (CZ) · Moscow (RU) · Kyiv (UA) · Detroit (US) · Shanghai (CN) · Dubai (AE) · Budapest (HU) · Mumbai (IN)

