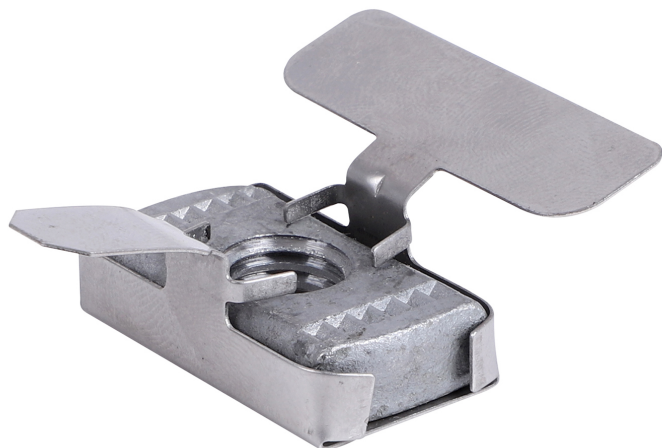


# Walraven Maxx Wingnut

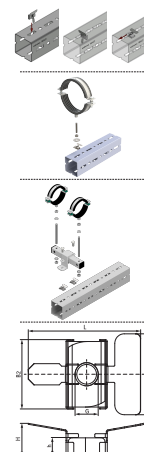
(H2 05 23)

for connecting clamps and brackets to Maxx Heavy Rail Profiles



## Funktioner och Fördelar

- patented slide nut for connecting clamps, sliders or RapidStrut® Rails to Maxx Profiles
- advised to be used with threaded rods M12, washers Ø 40mm and hexagon nuts M12
- to be used with thread adaptors for connecting clamps M16 or 1/2"
- material: slide nut made from steel 1.0332; aid tray made from stainless steel 1.4301
- slide nut: hot dip galvanized



Art.nr.	Typ	G	L	B (mm)	B2 (mm)	H (mm)	h (mm)	s (mm)	T <sub>inst</sub> (Nm)	F <sub>a,z</sub> (N)	F <sub>a,x</sub> (N)	fp
651867112	WN	M12	58,3	42	36	17	9	0,5	50,0	11 400	2 100	40

### Kompletterande

Walraven Maxx Balksystem  
Walraven Gångtub (BUP1000)  
Walraven Strut Bricka - Platt (BUP1000)

### Kompletterande

BIS Sexkantsmutter (BUP1000)  
BIS Glidelement (BUP1000)  
BIS Sexkantsskruv (BUP1000)