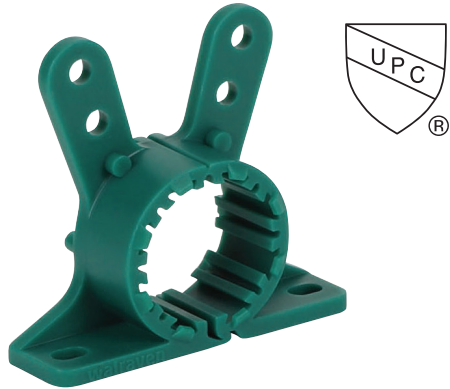


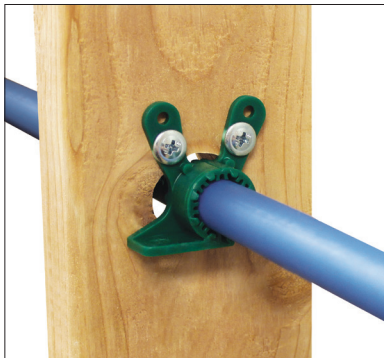
Rabbit Clamp



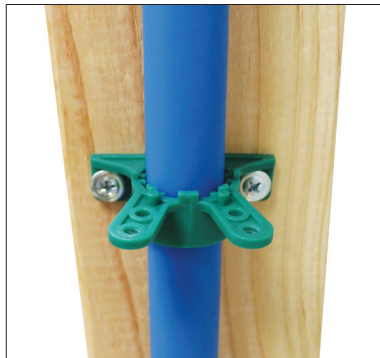
Product Specifications:

- One piece multi-purpose clamp that can be secured at the base or top using two screws to mount 1/2" pipe
- Ideal for copper, PEX and CPVC tubing
- Mounts directly to brackets, studs and walls
- Features multi-use mounting holes
- Materials: Polypropylene, PA6 (polyamide)

Item Number	Size (inches)	D / CTS (inches)	D / IPS (inches)	Items per pkg
0856016	1/2	1/2	-	100
0856022	3/4	3/4	1/2	100



Can be used as a grommet when mounted on wood stud.



Used to secure PEX pipe when mounted on wood stud.



Insulates PEX pipe when mounted on metal studs.

PRODUCT SUBMITTAL		Architect / Owner:
Job Name:		
		Contractor:
Date:		
Part No.	Qty:	Notes:

THE INFORMATION CONTAINED IN THIS SUBMITTAL SHEET IS PROPRIETARY TO WALRAVEN, INC. AND IS SUBJECT TO CHANGE WITHOUT NOTICE. THIS INFORMATION MAY NOT BE REPRODUCED IN PART OR WHOLE WITHOUT WRITTEN AUTHORIZATION FROM WALRAVEN, INC.

