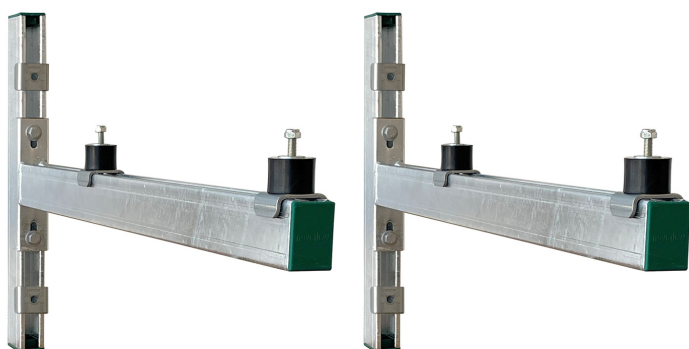


# Walraven Wall Mounting Set 62|H

(H 19 20)

universal Mounting Set for outdoor appliances



## Caracteristici și beneficii

- potrivit pentru utilizare în interior sau exterior
- universal mounting brackets for fixing indoor and outdoor appliances to the wall
- designed for the most common standard heat pumps
- stepless adjustable in height and wall distance
- with anti-vibration mounts type Walraven VibraTek® SB-MM
- material: oțel 1.0332
- material: vibration damper; rubber SBR + NR 55°+-5 Shore A steel class 4.8
- surface treatment: hot dip galvanized (EN-ISO 1461)
- set consists of:
  - 2 Cantilever Arms type RapidStrut 62|H
  - 2 lengths of 500mm wall rail type RapidStrut 62|H
  - 4 vibration dampers with pre-assembled fasteners
  - 6 rail endcaps
  - fasteners to connect Cantilever Arms to the wall rail
  - assembly instruction
  - anchors for mounting to the wall not included (order separately)

Art.Nr.	Tip	L	L1 (mm)	H (mm)	h (mm)	F <sub>a,z</sub> (N)	Amb. 1	U.M.
6901975	62   H	819 mm	750	508	200	1.200	1	St.

Max. allowed load F<sub>a,z</sub> per Set: 1.200 Newton (Total weight of the unit).

