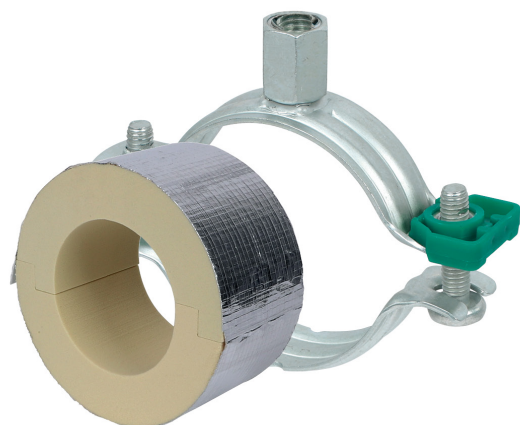


**BISOFIX<sup>®</sup> PIR50 + Bifix<sup>®</sup> G2**

(D 03 84)

12,0 - 114,3 mm

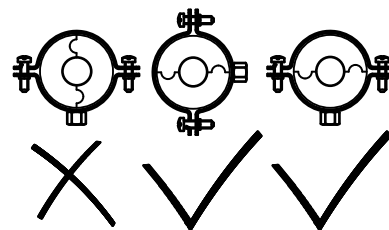
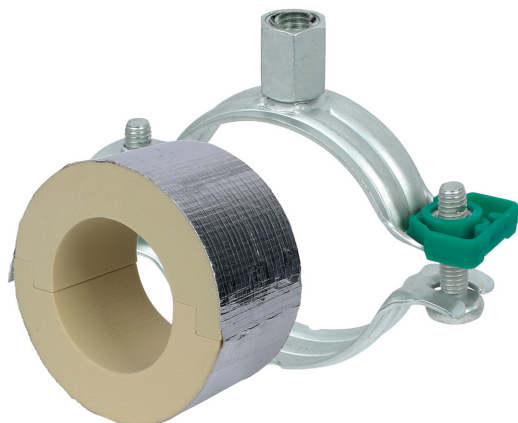
**Caracteristici și beneficii**

- for combination with elastomeric foam insulation
- vapourproof glueable with pipe insulation
- insulating pipe support with Bifix<sup>®</sup> G2 clamp
- Bifix<sup>®</sup> G2 with M8/M10 connection nut
- nu conține CFC, HCFC, formaldehidă sau cadmiu
- Brandklasse B2
- PIR density <80mm = 80kg/m<sup>3</sup>
- PIR density >80mm = 120kg/m<sup>3</sup>
- PIR density 80kg/m<sup>3</sup> => 0,024-0,026 [W/m\*K]
- PIR density 120kg/m<sup>3</sup> => 0,030-0,032 [W/m\*K]
- Protecția suprafeței:
  - tehnologie BIS UltraProtect<sup>®</sup> 1000
  - un singur sistem pentru aplicații interioare și exterioare
  - rezistență 1.000 ore la testul cu pulverizare salină cf. DIN EN ISO 9227
  - temperature range -45 °C - +105 °C

# BISOFIX<sup>®</sup> PIR50 + Bifix<sup>®</sup> G2

12,0 - 114,3 mm

(D 03 84)



I503008076	I500000076 + 3008180	76,1	Clamp BISOFIX <sup>®</sup> PIR50 + Bifix <sup>®</sup> G2	650	15
I503008089	I500000089 + 3008200	88,9	Clamp BISOFIX <sup>®</sup> PIR50 + Bifix <sup>®</sup> G2	690	15
I503008102	I500000102 + 3008200	101,6	Clamp BISOFIX <sup>®</sup> PIR50 + Bifix <sup>®</sup> G2	720	15
I503008108	I500000108 + 3008210	108,0	Clamp BISOFIX <sup>®</sup> PIR50 + Bifix <sup>®</sup> G2	760	15
I503008114	I500000114 + 3008210	114,3	Clamp BISOFIX <sup>®</sup> PIR50 + Bifix <sup>®</sup> G2	1.680	15