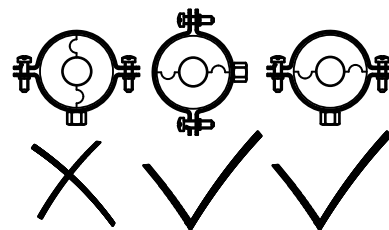
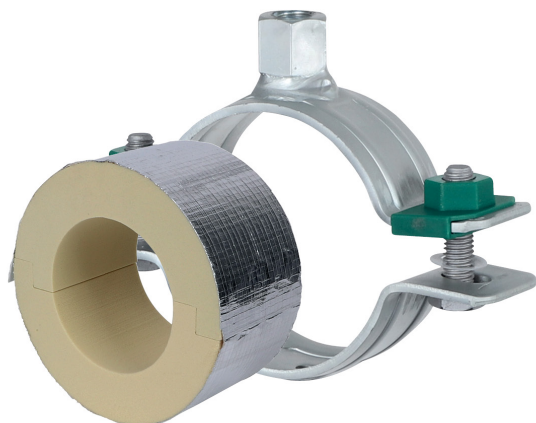


**BISOFIX<sup>®</sup> PIR40 + HD500**

12,0 - 323,9 mm

(D 03 76)

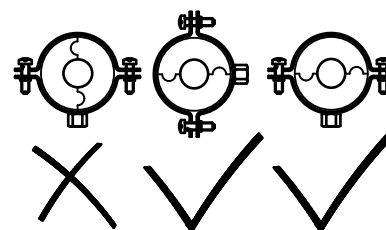
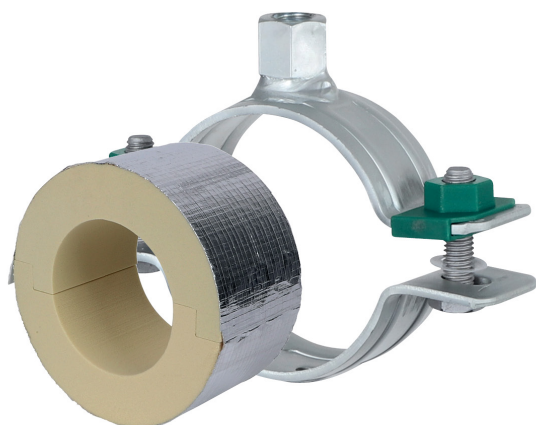
**Caracteristici și beneficii**

- for combination with elastomeric foam insulation
- vapourproof glueable with pipe insulation
- insulating pipe support with HD500 clamp
- HD500 clamp with M8/M10 and M10/M12 connection nut
- nu conține CFC, HCFC, formaldehidă sau cadmiu
- Brandklasse B2
- PIR density <80mm = 80kg/m<sup>3</sup>
- PIR density >80mm = 120kg/m<sup>3</sup>
- PIR density 80kg/m<sup>3</sup> => 0,024-0,026 [W/m\*K]
- PIR density 120kg/m<sup>3</sup> => 0,030-0,032 [W/m\*K]
- Protecția suprafeței:
  - tehnologie BIS UltraProtect<sup>®</sup> 1000
  - un singur sistem pentru aplicații interioare și exterioare
  - rezistență 1.000 ore la testul cu pulverizare salină cf. DIN EN ISO 9227
  - temperature range -45 °C - +105 °C

BISOFIX<sup>®</sup> PIR40 + HD500

12,0 - 323,9 mm

(D 03 76)



I403304076	I400000076 + 33048154	76,1	Clamp BISOFIX <sup>®</sup> PIR40 + HD500	530	15
I403304089	I400000089 + 33048169	88,9	Clamp BISOFIX <sup>®</sup> PIR40 + HD500	620	15
I403304102	I400000102 + 33048183	101,6	Clamp BISOFIX <sup>®</sup> PIR40 + HD500	650	15
I403304108	I400000108 + 33048183	108,0	Clamp BISOFIX <sup>®</sup> PIR40 + HD500	690	15
I403304114	I400000114 + 33048202	114,3	Clamp BISOFIX <sup>®</sup> PIR40 + HD500	1.530	5
I403304133	I400000133 + 33048219	133,0	Clamp BISOFIX <sup>®</sup> PIR40 + HD500	1.670	5
I403304140	I400000140 + 33048219	139,7	Clamp BISOFIX <sup>®</sup> PIR40 + HD500	1.730	5
I403304160	I400000160 + 33068241	159,0 - 160,0	Clamp BISOFIX <sup>®</sup> PIR40 + HD500	2.850	2
I403304168	I400000168 + 33068254	168,3	Clamp BISOFIX <sup>®</sup> PIR40 + HD500	2.960	2
I403304219	I400000219 + 33068302	219,1	Clamp BISOFIX <sup>®</sup> PIR40 + HD500	4.510	2
I403304273	I400000273 + 33068360	273,1	Clamp BISOFIX <sup>®</sup> PIR40 + HD500	5.320	2
I403304324	I400000324 + 33068408	323,9	Clamp BISOFIX <sup>®</sup> PIR40 + HD500	6.090	2