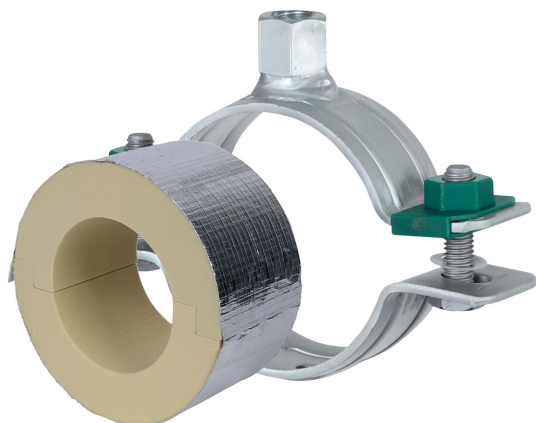


BISOFIX[®] PIR30 + HD500

(D 03 66)

12,0 - 323,9 mm

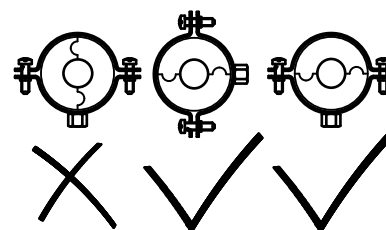
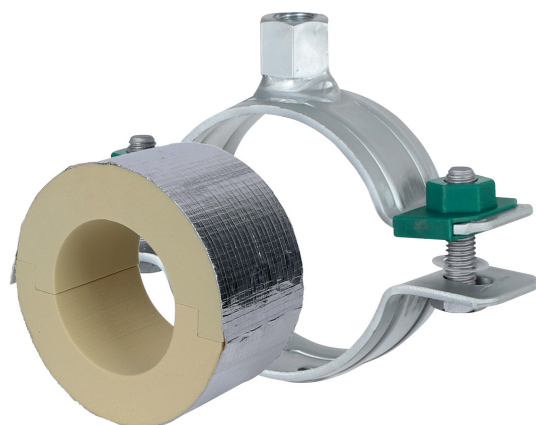
**Caracteristici și beneficii**

- for combination with elastomeric foam insulation
- vapourproof glueable with pipe insulation
- insulating pipe support with HD500 clamp
- HD500 clamp with M8/M10 and M10/M12 connection nut
- nu conține CFC, HCFC, formaldehidă sau cadmiu
- Brandklasse B2
- PIR density <80mm = 80kg/m³
- PIR density >80mm = 120kg/m³
- PIR density 80kg/m³ => 0,024-0,026 [W/m*K]
- PIR density 120kg/m³ => 0,030-0,032 [W/m*K]
- Protecția suprafeței:
 - tehnologie BIS UltraProtect[®] 1000
 - un singur sistem pentru aplicații interioare și exterioare
 - rezistență 1.000 ore la testul cu pulverizare salină cf. DIN EN ISO 9227
 - temperature range -45 °C - +105 °C

BISOFIX® PIR30 + HD500

12,0 - 323,9 mm

(D 03 66)



| | | | | | |
|------------|-----------------------|---------------|---------------------------------|-------|----|
| I303304076 | I300000076 + 33048140 | 76,1 | Clamp BISOFIX® PIR30 + HD500 | 460 | 25 |
| I303304089 | I300000089 + 33048154 | 88,9 | Clamp BISOFIX® PIR30 + HD500 | 500 | 15 |
| I303304102 | I300000102 + 33048169 | 101,6 | Clamp BISOFIX® PIR30 + HD500 | 550 | 15 |
| I303304108 | I300000108 + 33048169 | 108,0 | Clamp BISOFIX® PIR30 + HD500 | 620 | 15 |
| I303304114 | I300000114 + 33048183 | 114,3 | Clamp BISOFIX® PIR30 + HD500 | 1.370 | 15 |
| I303304133 | I300000133 + 33048202 | 133,0 | Clamp BISOFIX® PIR30 + HD500 | 1.520 | 5 |
| I303304140 | I300000140 + 33048202 | 139,7 | Clamp BISOFIX® PIR30 + HD500 | 1.570 | 5 |
| I303304160 | I300000160 + 33048219 | 159,0 - 160,0 | Clamp BISOFIX® PIR30 + HD500 | 1.720 | 5 |
| I303304168 | I300000168 + 33048227 | 168,3 | Clamp BISOFIX® PIR30 + HD500 | 2.720 | 2 |
| I303304219 | I300000219 + 33068289 | 219,1 | Clamp BISOFIX® PIR30 + HD500 | 4.210 | 2 |
| I303304273 | I300000273 + 33068325 | 273,1 | Clamp BISOFIX® PIR30 + HD500 | 5.020 | 2 |
| I303304324 | I300000324 + 33068389 | 323,9 | Clamp BISOFIX® PIR30 + HD500 | 5.790 | 2 |