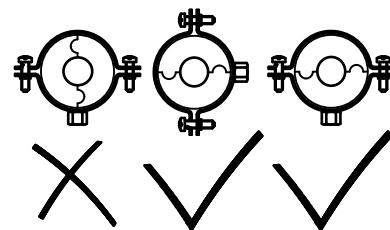
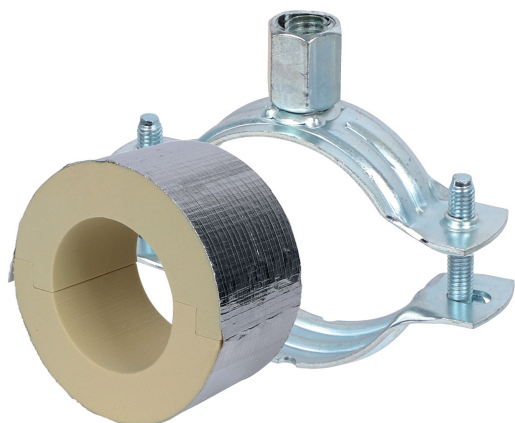


BISOFIX[®] PIR30 + 2S

12,0 - 160,0 mm

(D 03 62)

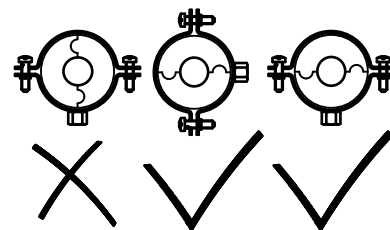
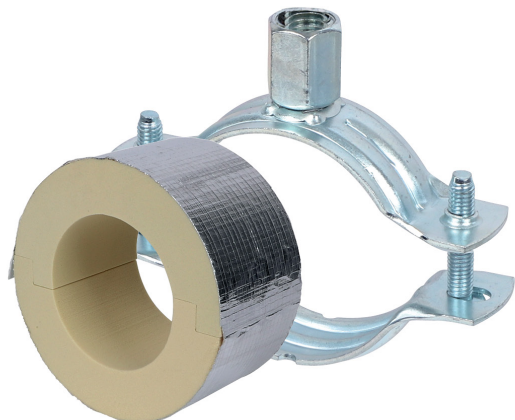
**Caracteristici și beneficii**

- for combination with elastomeric foam insulation
- vapourproof glueable with pipe insulation
- insulating pipe support with 2S clamp
- 2S clamp with M8/M10 connection nut
- nu conține CFC, HCFC, formaldehidă sau cadmiu
- Brandklasse B2
- PIR density <80mm = 80kg/m³
- PIR density >80mm = 120kg/m³
- PIR density 80kg/m³ => 0,024-0,026 [W/m*K]
- PIR density 120kg/m³ => 0,030-0,032 [W/m*K]
- colier: zincat electrolitic
- temperature range -45 °C - +105 °C

BISOFIX® PIR30 + 2S

12,0 - 160,0 mm

(D 03 62)



I303303076	I300000076 + 33035137	76,1	BISOFIX® PIR30 + 2S Clamp	460	25
I303303089	I300000089 + 33035153	88,9	BISOFIX® PIR30 + 2S Clamp	500	15
I303303102	I300000102 + 33035162	101,6	BISOFIX® PIR30 + 2S Clamp	550	15
I303303108	I300000108 + 33035172	108,0	BISOFIX® PIR30 + 2S Clamp	620	15
I303303114	I300000114 + 33035183	114,3	BISOFIX® PIR30 + 2S Clamp	1.370	15
I303303133	I300000133 + 33035194	133,0	BISOFIX® PIR30 + 2S Clamp	1.520	5
I303303140	I300000140 + 33035205	139,7	BISOFIX® PIR30 + 2S Clamp	1.570	5
I303303160	I300000160 + 33035225	159,0 - 160,0	BISOFIX® PIR30 + 2S Clamp	1.720	5