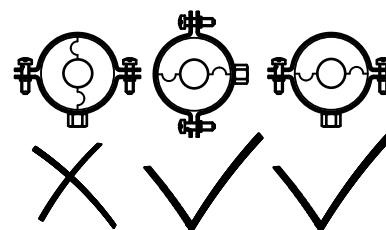
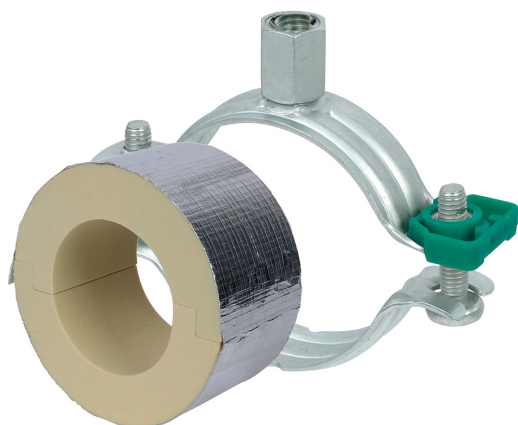


**BISOFIX<sup>®</sup> PIR20 + Bifix<sup>®</sup> G2**

(D 03 54)

12,0 - 168,3 mm

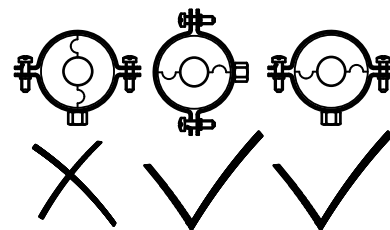
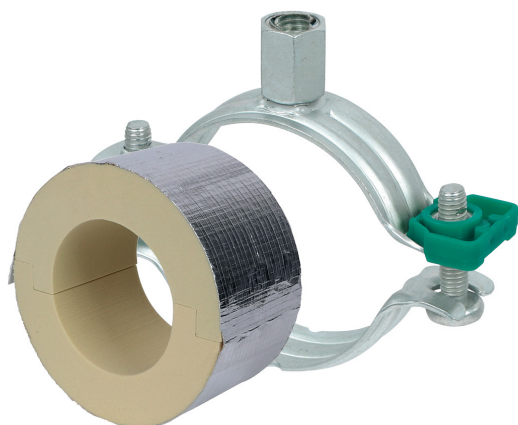
**Caracteristici și beneficii**

- for combination with elastomeric foam insulation
- vapourproof glueable with pipe insulation
- insulating pipe support with Bifix<sup>®</sup> G2 clamp
- Bifix<sup>®</sup> G2 with M8/M10 connection nut
- nu conține CFC, HCFC, formaldehidă sau cadmiu
- Brandklasse B2
- PIR density <80mm = 80kg/m<sup>3</sup>
- PIR density >80mm = 120kg/m<sup>3</sup>
- PIR density 80kg/m<sup>3</sup> => 0,024-0,026 [W/m\*K]
- PIR density 120kg/m<sup>3</sup> => 0,030-0,032 [W/m\*K]
- Protecția suprafeței:
  - tehnologie BIS UltraProtect<sup>®</sup> 1000
  - un singur sistem pentru aplicații interioare și exterioare
  - rezistență 1.000 ore la testul cu pulverizare salină cf. DIN EN ISO 9227
  - temperature range -45 °C - +105 °C

# BISOFIX<sup>®</sup> PIR20 + Bifix<sup>®</sup> G2

12,0 - 168,3 mm

(D 03 54)



I203008076	I200000076 + 3008115	76,1	Clamp BISOFIX <sup>®</sup> PIR20 + Bifix <sup>®</sup> G2	390	25
I203008089	I200000089 + 3008130	88,9	Clamp BISOFIX <sup>®</sup> PIR20 + Bifix <sup>®</sup> G2	430	25
I203008102	I200000102 + 3008140	101,6	Clamp BISOFIX <sup>®</sup> PIR20 + Bifix <sup>®</sup> G2	450	25
I203008108	I200000108 + 3008160	108,0	Clamp BISOFIX <sup>®</sup> PIR20 + Bifix <sup>®</sup> G2	500	25
I203008114	I200000114 + 3008160	114,3	Clamp BISOFIX <sup>®</sup> PIR20 + Bifix <sup>®</sup> G2	1.110	15
I203008133	I200000133 + 3008180	133,0	Clamp BISOFIX <sup>®</sup> PIR20 + Bifix <sup>®</sup> G2	1.360	5
I203008140	I200000140 + 3008180	139,7	Clamp BISOFIX <sup>®</sup> PIR20 + Bifix <sup>®</sup> G2	1.410	5
I203008160	I200000160 + 3008200	159,0 - 160,0	Clamp BISOFIX <sup>®</sup> PIR20 + Bifix <sup>®</sup> G2	1.520	5
I203008168	I200000168 + 3008210	168,3	Clamp BISOFIX <sup>®</sup> PIR20 + Bifix <sup>®</sup> G2	1.570	5