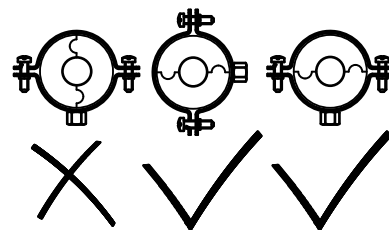
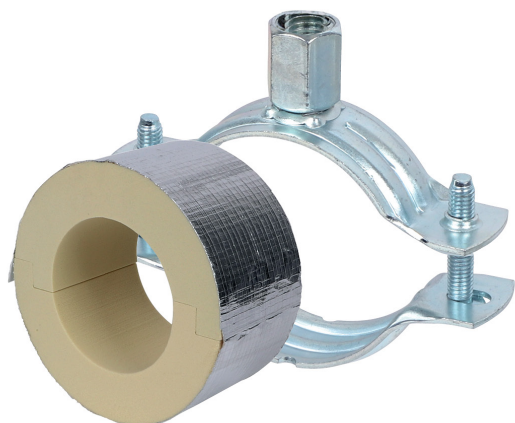


BISOFIX[®] PIR20 + 2S

12,0 - 168,3 mm

(D 03 52)

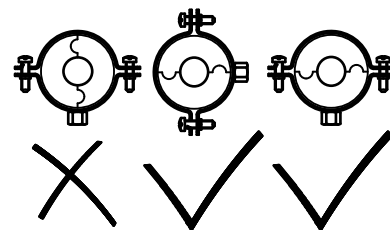
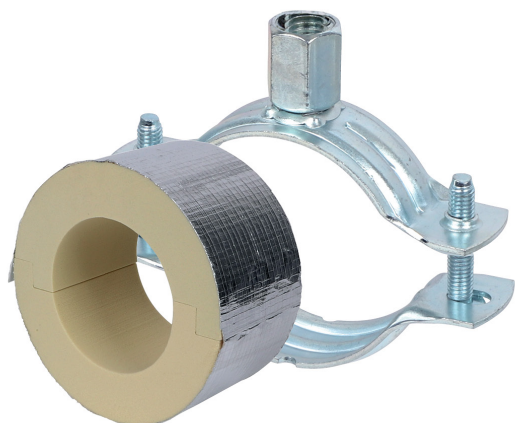
**Caracteristici și beneficii**

- for combination with elastomeric foam insulation
- vapourproof glueable with pipe insulation
- insulating pipe support with 2S clamp
- 2S clamp with M8/M10 connection nut
- nu conține CFC, HCFC, formaldehidă sau cadmiu
- Brandklasse B2
- PIR density <80mm = 80kg/m³
- PIR density >80mm = 120kg/m³
- PIR density 80kg/m³ => 0,024-0,026 [W/m*K]
- PIR density 120kg/m³ => 0,030-0,032 [W/m*K]
- colier: zincat electrolitic
- temperature range -45 °C - +105 °C

BISOFIX® PIR20 + 2S

12,0 - 168,3 mm

(D 03 52)



I203303076	I200000076 + 33035118	76,1	BISOFIX® PIR20 + 2S Clamp	390	25
I203303089	I200000089 + 33035137	88,9	BISOFIX® PIR20 + 2S Clamp	430	25
I203303102	I200000102 + 33035144	101,6	BISOFIX® PIR20 + 2S Clamp	450	25
I203303108	I200000108 + 33035153	108,0	BISOFIX® PIR20 + 2S Clamp	500	25
I203303114	I200000114 + 33035162	114,3	BISOFIX® PIR20 + 2S Clamp	1.110	15
I203303133	I200000133 + 33035183	133,0	BISOFIX® PIR20 + 2S Clamp	1.360	5
I203303140	I200000140 + 33035183	139,7	BISOFIX® PIR20 + 2S Clamp	1.410	5
I203303160	I200000160 + 33035205	159,0 - 160,0	BISOFIX® PIR20 + 2S Clamp	1.520	5
I203303168	I200000168 + 33035216	168,3	BISOFIX® PIR20 + 2S Clamp	1.570	5