

Declaration of Performance

According to Annex III of the Regulation (EU) Nr. 305/2011 (Construction Products Regulation).

Pacifyre® AWM

Nr. 0761-CPR-18-0906.

1. Unique identification code of the product-type:

- Pacifyre® AWM.

2. Batch identification of the products:

- See Batch number displayed on the product.

3. Intended use or uses of the construction product:

- Fire Stopping and Sealing Products for Penetration Seals, see ETA-13/0918 (2018).

Pipe Penetrations	Plastic pipes	The field of application has to comply with the content the ETA-13/0906 (2018) & Classification 14318E
-------------------	---------------	--

4. Name and contact address:

- J. van Walraven Holding B.V. - Industrieweg 5 - 3641 RK Mijdrecht - The Netherlands.

5. System of assessment and verification of constancy of performance (AVCP) of the construction product:

- System 1.

6. In case of the declaration of performance concerning a construction product covered by a harmonized standard:

- Not applicable.

7. European Assessment Document, European Technical Assessment, Technical Assessment Body & Notified Body:

- Not applicable.

EAD	ETA	TAB	NB
ETAG 026-2	ETA-13/0906	DIBt	MPA Braunschweig, No. 0761

8. Declared Performance:

Essential characteristics	ETA
Reaction to fire	Class E according EN 13501-1
Resistance to fire	In accordance with EN 13501-2. See annex
Dangerous substances	None according
Durability and serviceability	Use category Type X
Other	Not applicable / No performance determined

9. The performance of the product identified in points 1 and 2 is in conformity with the declared performance in point 8.

This declaration of performance is issued under the sole responsibility of the manufacturer identified in point 4.

Signed for and on behalf of the manufacturer by:


Frank Nijdam

Group Director Product Marketing and Innovation

Mijdrecht, 28.09.2018

J. van Walraven Holding B.V.

Annex 1

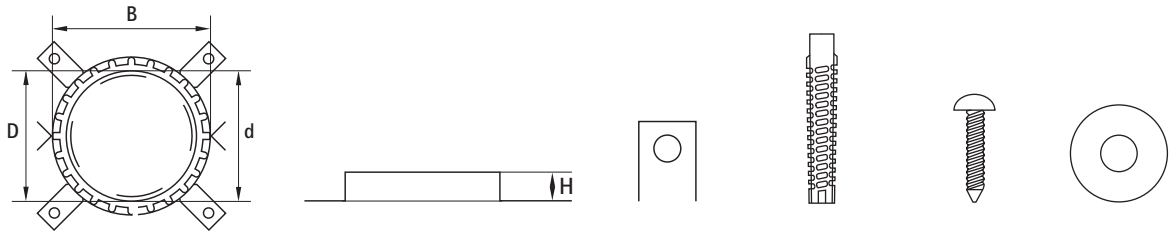
Pacifyre® AWM general aspects

The Pacifyre® AWM consists out of 2 variations.

Pacifyre® AWM III ranges from size Ø 32 till Ø 160 mm.

Pacifyre® AWM II ranges from size Ø 32 till Ø 400 mm*.

*Commercially the Pacifyre® AWM II with sizes above Ø 200 mm are also known in the market as Pacifyre AWM MAX.



	D	d	B	H	#	#	#	#
AWM III	15 - 32	38	47	26	2	2	2	2
	20 - 40	46	55	26	2	2	2	2
	25 - 50	56	65	26	2	2	2	2
	32 - 63	69	82	26	4	4	4	4
	40 - 75	81	94	26	4	4	4	4
	50 - 90	96	114	26	4	4	4	4
	63 - 110	116	134	26	4	4	4	4
	75 - 125	132	150	40	4	4	4	4
	90 - 140	144	168	40	4	4	4	4
	110 - 160	164	188	40	4	4	4	4
AWM II	15 - 32	36	50	26	2	2	2	2
	20 - 40	44	58	26	2	2	2	2
	25 - 50	54	68	26	2	2	2	2
	32 - 63	67	94	26	4	4	4	4
	40 - 75	79	106	26	4	4	4	4
	50 - 90	94	132	26	4	4	4	4
	63 - 110	114	155	26	4	4	4	4
	75 - 125	129	172	40	4	4	4	4
	90 - 140	144	200	40	4	4	4	4
	110 - 160	164	220	40	4	4	4	4
	125 - 180	184	264	40	8	8	8	8
	140 - 200	204	284	40	8	8	8	8
	160 - 225	239	328	44.5	10	10	10	10
	180 - 250	264	353	44.5	10	10	10	10
	200 - 280	289	378	44.5	12	12	12	12
	225 - 300	314	403	44.5	12	12	12	12
	250 - 315	328	417	44.5	12	12	12	12
280 - 350	370	459	44.5	12	12	12	12	
300 - 400	415	504	44.5	12	12	12	12	

It is assumed that:

- The floor must be classified according to EN 13501-2.
- The floor shall be at least 150 mm thick.
- The installation of the penetration seal does not affect the stability of the adjacent building element – even in case of fire.
- The installations are fixed to the adjacent building element in accordance with the relevant regulations in such a way that, in case of fire, no additional mechanical load is imposed to the penetration seal.
- The support of the installations is maintained for the required period of the fire resistance.
- Pneumatic dispatch systems, compressed air systems, etc. are switched off by additional means in case of fire.

The risk of downward spread of fire caused by burning material which drips through a pipe to floors below, is not considered in this European Technical Assessment (see EN 1366-3:2009, clause 1).

Always check ETA-13/0906 & Classification 14318E, 14027B for the details.

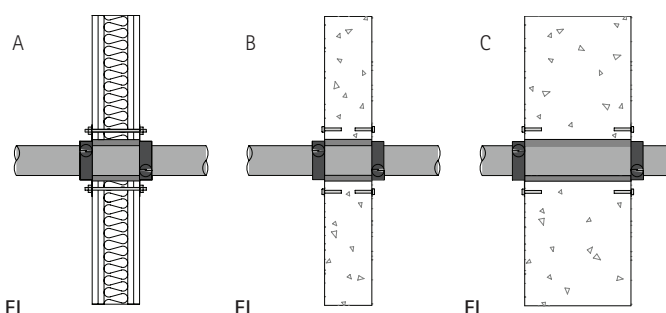
Annex 2

Pacifyre® AWM through wall partitions

The below applies to seals in walls with the following specifications.

- The wall must to be classified according EN 13501-2.
- The wall shall be at least 100 mm thick (A & B) or at least 300 mm thick (C).
- The walls shall be made from concrete, aerated concrete, bricks (B & C) or a lightweight partition (A).
- For lightweight partitions (A), the number of boards on each side shall be at least 2 and the total thickness of the boards on each side shall be at least 25 mm.
- Lightweight partitions (A) made with timber frame shall have at least two boards on each side, and the total thickness of the boards on each side shall be at least 25 mm. No penetration must be closer than 100 mm to a timber batten. The void between the penetration and the timber batten shall be filled with an insulation material with reaction to fire class A1 or A2 according to EN 13501-1.
- The pipes shall penetrate the walls perpendicular to the walls.
- The penetrations shall be made as single penetrations.
- The distance from the wall to the nearest support position for the services shall be ≤ 470 mm.

ETA13/0906 +
clasificaciones 14318E,
14027B B



			EI	EI	EI
PVC-U & PVC-C	50	1.8	-	-	240 U/C
	≤ 50	1.8 - 5.6	120 U/U	120 U/U	120 U/U
	110	5.3	-	-	240 U/C
	≤ 110	2.2 - 12.3	120 U/C ¹	120 U/C ¹	120 U/C*
	≤ 160	3.2 - 11.8	120 U/C	120 U/C	120 U/C
	≤ 200	4 - 9.6	-	240 U/C	240 U/C
	≤ 400	5 - 11.7	-	-	120 U/C
	≤ 400	11.7	-	-	240 U/C
PE-HD, ABS & SAN+PVC	50	1.8	120 U/U	-	240 U/C
	≤ 50	1.8 - 4.6	120 U/C	120 U/C	120 U/C
	≤ 110	2.7 - 10	120 U/C ²	120 U/C ²	120 U/C ²
	160	9.1	-	-	180 U/C
	≤ 160	4 - 14.6	120 U/C	120 U/C	120 U/C
	≤ 200	4.9 to 11.4	120 U/C	120 U/C	120 U/C
	≤ 400	9.8 - 22.7	-	-	120 U/C
	≤ 400	4.9	-	-	240 U/C
PP	≤ 50	1.8 - 4.6	120 U/C	120 U/C	120 U/C
	≤ 110	2.7-10	120 U/C ²	120 U/C ²	120 U/C ²
	≤ 160	4 - 14.6	120 U/C	120 U/C	120 U/C
	≤ 200	4.9 - 11.4	-	120 U/C	120 U/C
	≤ 200	4.9	-	120 U/C	240 U/C
Coolfit	90 - 25	2.2 - 2.3	120 U/C	-	120 U/C
	90 - 32	2.2 - 1.9	120 U/C	-	120 U/C
	110 - 40	2.7 - 2.4	120 U/C	-	120 U/C
	110 - 50	2.7 - 3.0	120 U/C	-	120 U/C
	125 - 63	3.0 - 3.8	120 U/C	-	120 U/C
	140 - 75	3.0 - 4.6	120 U/C	-	120 U/C
	160 - 90	3.0 - 5.4	120 U/C	-	120 U/C
	180 - 110	3.0 - 6.6	120 U/C	-	120 U/C
	225 - 140	3.2 - 9.2	-	-	120 U/C
	250 - 160	3.9 - 10.5	-	-	120 U/C
	280 - 200	4.4 - 13.1	-	-	90 U/C
315 - 225	4.9 - 14.8	-	-	90 U/C	

¹ Ø 110 - 2,2 = 120 U/U

² Ø 110 - 2,7 = 120 U/U

Annex 3

Pacifyre® AWM through floor partitions

The below applies to seals in walls with the following specifications.

- The floor must be classified according to EN 13501-2.
- The floor shall be at least 150 mm thick (D) or at least 300 mm thick (E).
- The floor shall be made from concrete or aerated concrete with a density of at least 550 kg/m³.
- The distance between two single Ø 110 mm penetrations shall be at least 100 mm.
- The pipes shall penetrate the floor perpendicular to the floor.
- The distance from the wall to the nearest support position for the services shall be ≤ 470 mm.

ETA13/0906 + classifications 14318E, 14027B B	D		E	
	≤	1,8 - 5,6	EI	EI
PVC-U & PVC-C	≤ 50	1,8 - 5,6	120 U/U	120 U/U
	≤ 110	2,2 - 12,3	120 U/C	120 U/C
	≤ 160	3,2 - 11,8	120 U/C	120 U/C
	≤ 200	4 - 9,6	120 U/C	120 U/C
	≤ 400	5 - 11,7	-	120 U/C
PE (LD/MD/HD), ABS & SAN+PVC	≤ 50	1,8 - 4,6	120 U/U	120 U/U
	≤ 110	2,7 - 10	120 U/C	120 U/C
	≤ 160	4 - 14,6	120 U/C	120 U/C
	≤ 200	4,9 - 18,2	120 U/C	120 U/C
	≤ 400	9,8 - 22,7	-	120 U/C
PP	50	1,8	120 U/U	120 U/U
	≤ 50	1,8 - 4,6	120 U/C	120 U/C*
	110	2,7	120 U/U	120 U/U
	≤ 110	2,7 - 10	120 U/C	120 U/C
	≤ 160	4 - 14,6	120 U/C	120 U/C
	≤ 200	4,9 - 11,4	120 U/C	120 U/C
	≤ 315	7,7 - 19,7	-	90 U/C
Coolfit	90-25	2,2 - 2,3	120 U/C	120 U/C
	90-32	2,2 - 1,9	120 U/C	120 U/C
	110-40	2,7 - 2,4	120 U/C	120 U/C
	110-50	2,7 - 3,0	120 U/C	120 U/C
	125-63	3,0 - 3,8	120 U/C	120 U/C
	140-75	3,0 - 4,6	90 U/C	90 U/C
	160-90	3,0 - 5,4	90 U/C	90 U/C
	180-110	3,0 - 6,6	90 U/C	90 U/C
	225-140	3,2 - 9,2	-	90 U/C
	250-160	3,9 - 10,5	-	90 U/C
	280-200	4,4 - 13,1	-	90 U/C
	315-225	4,9 - 14,8	-	120 U/C