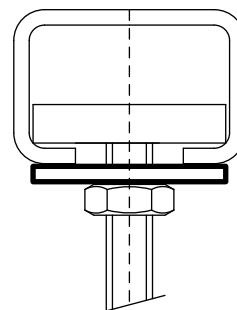


# Walraven Rondelle (piane)

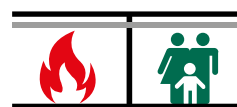
(G 30 75)

fissaggio a profili Walraven RapidRail®



## Features and benefits

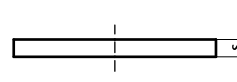
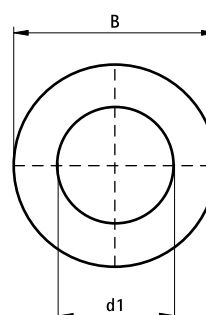
- adatto per profili 27x18, 30x15, 30x20, 30x30, 30x45, 38x40
- sicurezza antincendio testata
- materiale: acciaio
- in acciaio



Part No.	B (mm)	s (mm)	d1 (mm)	For Rail	Pack 1	Pack 2
6533306	25	2,5	Ø 6,4	27x18, 30x15, 30x20, 30x30, 30x45, 38x40	100	1.000
6533308	25	2,5	Ø 8,4	27x18, 30x15, 30x20, 30x30, 30x45, 38x40	100	1.000
6533310	25	2,5	Ø 10,5	27x18, 30x15, 30x20, 30x30, 30x45, 38x40	100	1.000
6533312	25	2,5	Ø 13,0	27x18, 30x15, 30x20, 30x30, 30x45, 38x40	100	1.000

Testato ai fini della classificazione ignifuga.

Articolo Nr. 6533306, la resistenza al fuoco non è stata testata.



## Complementary

Walraven RapidRail® Cantilever Arm  
Walraven RapidRail® Fixing Rail