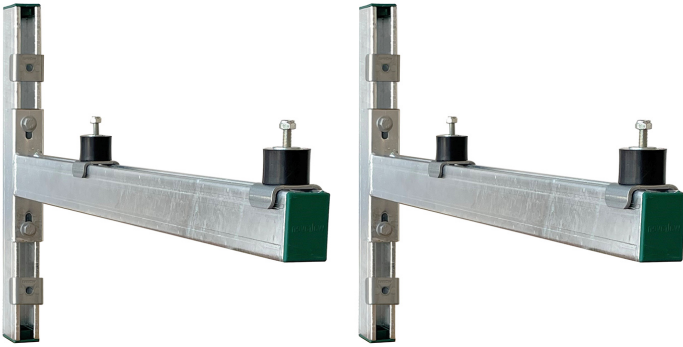


## Walraven Wall Mounting Set 62|H

(H 19 20)

universal Mounting Set for outdoor appliances



### Jellemzők és előnyök

- kültéri és beltéri használatra
- universal mounting brackets for fixing indoor and outdoor appliances to the wall
- designed for the most common standard heat pumps
- stepless adjustable in height and wall distance
- with anti-vibration mounts type Walraven VibraTek® SB-MM
- alapanyag: acél 1.0332
- material: vibration damper; rubber SBR + NR 55°+-5 Shore A steel class 4.8
- surface treatment: hot dip galvanized (EN-ISO 1461)
- set consists of:
  - 2 Cantilever Arms type RapidStrut 62|H
  - 2 lengths of 500mm wall rail type RapidStrut 62|H
  - 4 vibration dampers with pre-assembled fasteners
  - 6 rail endcaps
  - fasteners to connect Cantilever Arms to the wall rail
  - assembly instruction
  - anchors for mounting to the wall not included (order separately)

| Cikkszám   | Típus  | L      | L1<br>(mm) | H<br>(mm) | h<br>(mm) | F <sub>a,z</sub><br>(N) | db/csomag 1 | Mértékegység |
|--|--------|--------|------------|-----------|-----------|-------------------------|-------------|--------------|
| 6901975  | 62   H | 819 mm | 750        | 508       | 200       | 1 200                   | 1           | darab        |
| Max. allowed load F <sub>a,z</sub> per Set: 1.200 Newton (Total weight of the unit). |        |        |            |           |           |                         |             |              |

