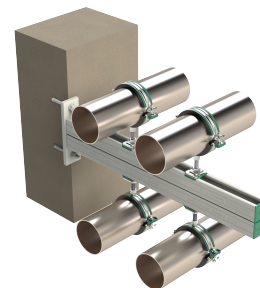


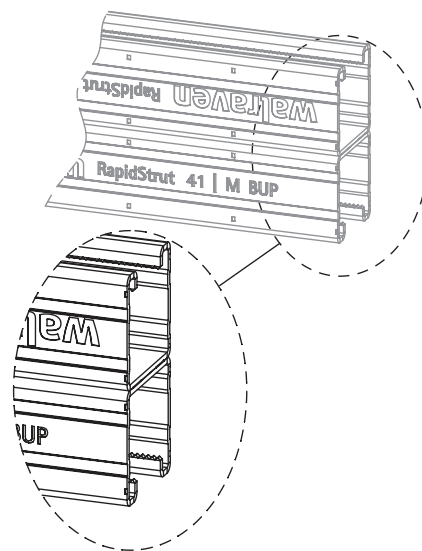
Walraven RapidStrut® Cantilever Arm 41x41D (BUP1000)

(H 08 12)



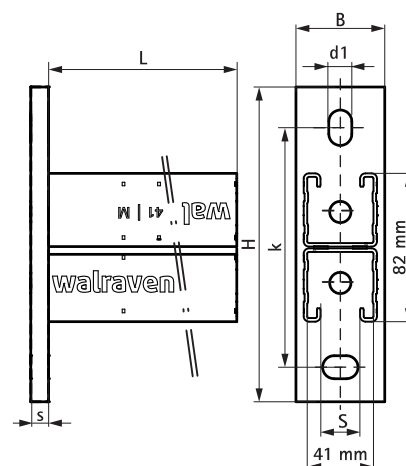
Prednosti i osobine

- base plate with welded C-profile
- for quick and adjustable fixing of one or multiple pipes
- CO₂-zavarena
- patron otvora na podjednako udaljenosti cijelom dužinom trake
- with sawing marks each 50 mm
- well balanced relation between base plate and profile for optimal use of load performance
- material: profiles made of steel 1.0038 (S235JR)
- material: base plate made of steel 1.0044 (S275JR)
- zaštita materijala:
 - proizvod je deo Walraven BIS UltraProtect® sistema
 - pogodan za unutrašnju i spoljašnu upotrebu
 - izdržava min. 1 000 sati sonog sprej testa (max. 5% crvene rdje) prema ISO standardu 9227
- za više informacija o maks. dozvoljenoj nosivosti ($F_{a,z}$), pogledajte tabelu za nosivost ili naš online datasheet 'Walraven RapidStrut® Datasheet'



Art.br.	L	B	H	s1	d1	S	k	Od šina	KK	Jl
		(mm)	(mm)	(mm)	(mm)	(mm)	(mm)			
66088240	400 mm	50	177,50	10,0	20 x 13	22	135	RapidStrut 41 M	8	kom.
66088260	600 mm	50	177,50	10,0	20 x 13	22	135	RapidStrut 41 M	4	kom.
66088280	800 mm	50	177,50	10,0	20 x 13	22	135	RapidStrut 41 M	-	kom.
66088298	1.000 mm	50	177,50	10,0	20 x 13	22	135	RapidStrut 41 M	-	kom.

Za više informacija o maks. dozvoljenoj nosivosti ($F_{a,z}$), pogledajte tabelu za nosivost ili naš online datasheet 'Walraven RapidStrut® Datasheet'.



Kompetabilno

Walraven RapidStrut® Klizna navojnica G2 (BUP1000)
Walraven RapidStrut® Hammerfix G2 (BUP1000)