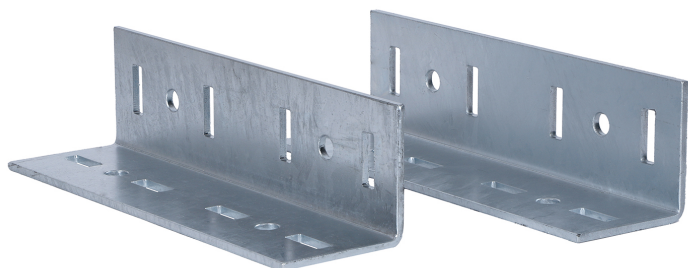


Walraven Maxx Linear Connector Set

(H2 05 33)

to make Maxx rail fabrications



Prednosti i osobine

- for linear connection of Maxx profiles tipa MX100, MX120
- material: steel S235JR
- termički cinkovan
- to be used in pairs
- delivery and assembly always in pairs (1 piece = set of 2)

Art.br.	Tipa	L	B (mm)	H (mm)	s (mm)	d1 (mm)	d2 (mm)	k (mm)	KK	Jl
6589310	LC100/120	368 mm	102	102	8	40 x 14	Ø 17.0	100	1	kom.

