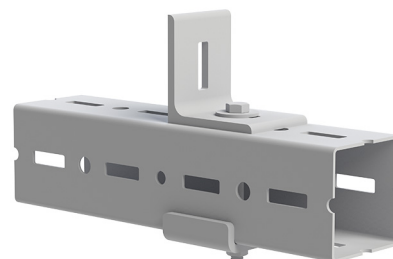


## Walraven Maxx Bolt Set (ZTD)

(H2 05 28)

for fixing to Maxx Heavy Rail Profiles



### Prednosti i osobine

- for fixing in profile perforation
- when tightening directly onto Maxx profiles, it is strongly advised to use Maxx U-shape brackets
- hexagon head bolt set with washer and serrated flange nut for Maxx profile connections
- the bolt size is ideally suited to fit the perforation of Maxx Heavy Rail Profile
- max. torque is 80Nm
- hexagon nut with collar and serration
- materijal: čelik, klasa snage 8.8
- surface treatment: zinc flake coated
- set se sastoji od:
  - 1 bolt
  - 1 nut
  - 1 washer

Art.br.	Model	G	L	KK
614581612	Maxx 80 Bolt Set	M16	120 mm	25

