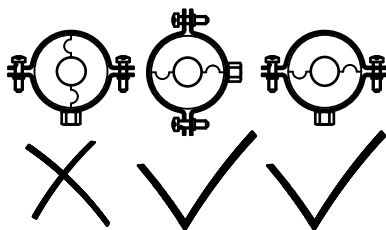
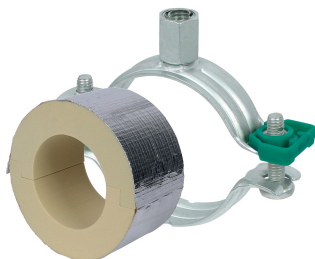


BISOFIX[®] PIR40 + Bifix[®] G2

(D 03 74)

za rashladne medije 12,0 - 139,7 mm



Prednosti i osobine

- for combination with rigid foam insulation
- cover joints with aluminium tape
- insulating pipe support with Bifix[®] G2 clamp
- Bifix[®] G2 with M8/M10 connection nut
- ne sadrži FCKW, HFCKW, formaldehid ili kadmium supstance
- otpornost na požar klasa: B2
- PIR density for D <110mm = 80kg/m³
- PIR density for D >110mm = 120kg/m³
- thermal conductivity lambda (approx. value): 0.30 W/(mK)
- zaštita materijala:
 - proizvod je deo Walraven BIS UltraProtect[®] sistema
 - pogodan za unutrašnju i spoljašnju upotrebu
 - izdržava min. 1 000 sati sonog sprej testa (max. 5% crvene rdje) prema ISO standardu 9227
- temperature range -45 °C - +105 °C

Art.br.	Consists Of	D (mm)	Model	F _{a,z} (N)	KK
I403008012	I400000012 + 3008091	12,0	BISOFIX [®] PIR40 + Bifix [®] G2 Clamp	300	50
I403008015	I400000015 + 3008105	15,0 - 16,0	BISOFIX [®] PIR40 + Bifix [®] G2 Clamp	320	50
I403008018	I400000018 + 3008105	17,2 - 18,0	BISOFIX [®] PIR40 + Bifix [®] G2 Clamp	340	50
I403008022	I400000022 + 3008105	21,3 - 22,0	BISOFIX [®] PIR40 + Bifix [®] G2 Clamp	350	50
I403008028	I400000028 + 3008115	26,9 - 28,0	BISOFIX [®] PIR40 + Bifix [®] G2 Clamp	350	25
I403008034	I400000034 + 3008115	33,7 - 35,0	BISOFIX [®] PIR40 + Bifix [®] G2 Clamp	370	25
I403008042	I400000042 + 3008130	42,4	BISOFIX [®] PIR40 + Bifix [®] G2 Clamp	410	25
I403008048	I400000048 + 3008130	48,3	BISOFIX [®] PIR40 + Bifix [®] G2 Clamp	430	25
I403008054	I400000054 + 3008140	54,0	BISOFIX [®] PIR40 + Bifix [®] G2 Clamp	440	25
I403008057	I400000057 + 3008140	56,0 - 57,0	BISOFIX [®] PIR40 + Bifix [®] G2 Clamp	460	25
I403008060	I400000060 + 3008140	60,3	BISOFIX [®] PIR40 + Bifix [®] G2 Clamp	470	25
I403008064	I400000064 + 3008140	64,0	BISOFIX [®] PIR40 + Bifix [®] G2 Clamp	490	25
I403008070	I400000070 + 3008160	70,0	BISOFIX [®] PIR40 + Bifix [®] G2 Clamp	510	15
I403008076	I400000076 + 3008160	76,1	BISOFIX [®] PIR40 + Bifix [®] G2 Clamp	530	15
I403008089	I400000089 + 3008180	88,9	BISOFIX [®] PIR40 + Bifix [®] G2 Clamp	620	15
I403008102	I400000102 + 3008180	101,6	BISOFIX [®] PIR40 + Bifix [®] G2 Clamp	650	15
I403008108	I400000108 + 3008200	108,0	BISOFIX [®] PIR40 + Bifix [®] G2 Clamp	690	15
I403008114	I400000114 + 3008200	114,3	BISOFIX [®] PIR40 + Bifix [®] G2 Clamp	1.530	5
I403008133	I400000133 + 3008210	133,0	BISOFIX [®] PIR40 + Bifix [®] G2 Clamp	1.670	5
I403008140	I400000140 + 3008225	139,7	BISOFIX [®] PIR40 + Bifix [®] G2 Clamp	1.730	5