

BIS Expansion Guide Assembly (BUP1000)

(E 10 40)

za axialne dilatacije

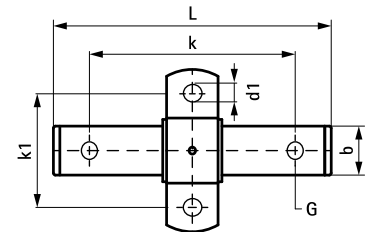
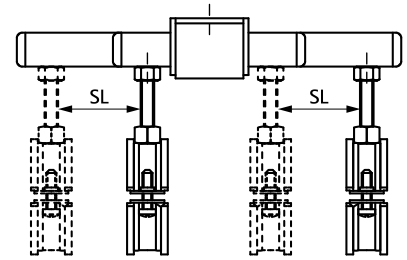


666 8 612

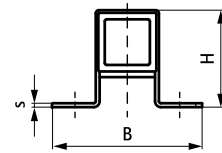
666 8 813

Prednosti i osobine

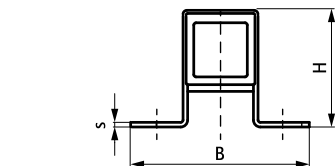
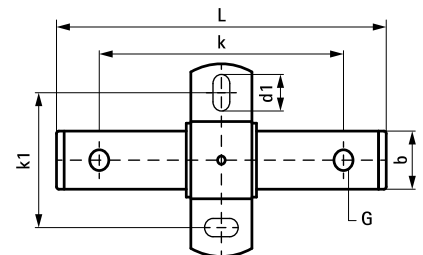
- stable and safe double support for pipe expansion
- fix directly on the building structure or in combination with rail systems
- suitable for ceiling mounting (suspended) and floor mounting (standing mounted)
- fleksibilna izvedba kliznog elementa sa dvije dimenzije priključne navojnice, što omogućava istovremenu montažu dvije dimenzije navoja
- a variety of connection possibilities, can be combined with Bifix® G2 or HD1501 Pipe Clamps
- material: metal parts made of steel; sliding plates made of PE
- zaštita materijala:
 - proizvod je deo Walraven BIS UltraProtect® sistema
 - pogodan za unutrašnju i spoljašnju upotrebu
 - izdržava min. 1 000 sati sonog sprej testa (max. 5% crvene rdje) prema ISO standardu 9227



666 8 612



666 8 813



Art.br.	Tipa	G	L	B	H	b	s	d1	k	k1	SL (max.)	F _{a,z} (N)	KK
				(mm)	(mm)	(mm)	(mm)	(mm)	(mm)	(mm)	(mm)		
6668612	FG2	M10/12	170 mm	135	46	35	3,0	Ø 13	120	100	60	1.500	5
6668813	FG3	Ø 13,0 mm / 17,0 mm	255 mm	146	90	40	5,0	20 x 13	200	100	120	7.500	5

Kompetabilno

Walraven Navojni štiftovi
Walraven Navojne šipke
WTB1 Throughbolt Anchor

Alternativa

BIS Expansion Device (BUP1000)