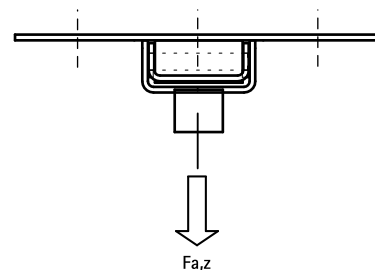


BIS Expansion Device (BUP1000)

(E 10 35)

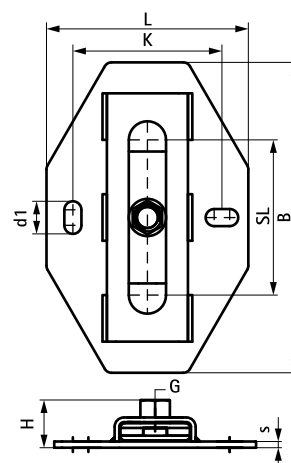
za axialne dilatacije



Prednosti i osobine

- single support for pipe expansion
- secure parts ensure mechanism will not slide out
- fix directly on the building structure or in combination with rail systems
- suitable for ceiling mounting (suspended) and floor mounting (standing mounted)
- very low installation height, useful in small spaces
- a variety of connection possibilities, can be combined with Bifix® G2 or HD1501 Pipe Clamps
- material: metal parts made of steel; plastic parts made of POM (polyoxymethylene)
- friction coefficient $\mu = 0.18$; Sliding friction coefficient $\mu = 0.14$
- zaštita materijala:
 - proizvod je deo BIS UltraProtect® sistema
 - pogodan za unutrašnju i spoljašnju upotrebu
 - izdržava min. 1 000 sati sonog sprej testa (max. 5% crvene rdje) prema ISO standardu 9227
- postojana na temperaturu do +120 °C

Art.br.	Model	G	L	B	H	s	d1	k	SL (max.)	F _{a,z} (N)	KK
6668310	Jednodijelna	M8/10	130 mm	200	31	4,0	21 x 11	96	100	3.500	5
6668312	Jednodijelna	M10/12	130 mm	200	34	4,0	21 x 11	96	100	4.800	5
6668316	Jednodijelna	M16	130 mm	200	31	4,0	21 x 11	96	100	4.800	5



Kompetabilno

BIS Navojni štiftovi
 BIS Navojne šipke
 WTB1 Throughbolt Anchor

Alternativa

BIS Expansion Guide Assembly (BUP1000)