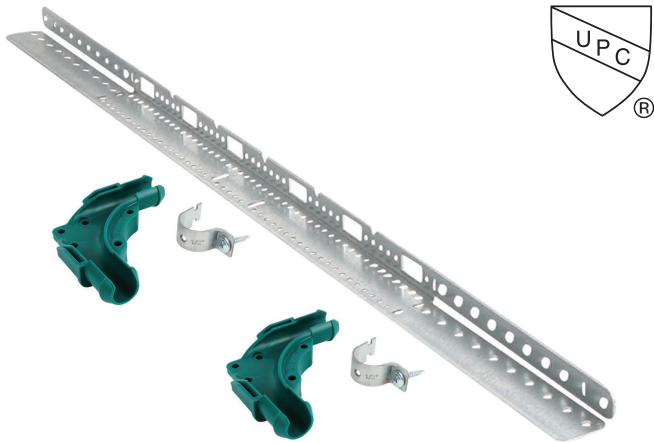


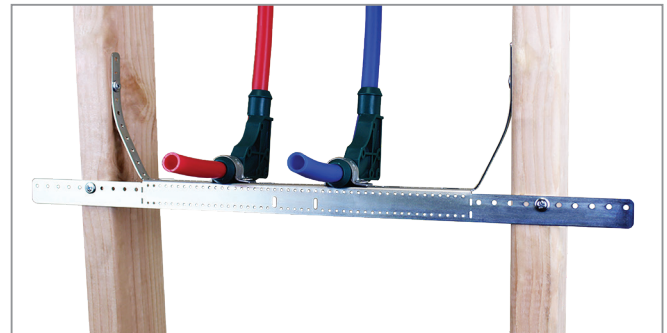
Heavy Angled Wall Bracket (HAWB) 1/2" PEX Stub-Out Kit



Product Specifications

- A heavy duty bracket with 1/2" hot and cold PEX stub-outs for in-wall pipe support
- 4 mounting points to both the inside and front of studs for excellent stability and strength
- Bracket is adjustable to accommodate different stud spacing
- Hole pattern for stub-outs is every 2" with adjustability of + or - 1/2"
- Ideal for multiple applications
- Conveniently pre-packaged with mounting hardware

Item number	Each kit contains	Items per pkg.
59495111	HAWB1 which spans from 12" to 20", double PEX stub-out brackets, mounting hardware	25
59495112	HAWB2 which spans from 18" to 26", double PEX stub-out brackets, mounting hardware	25



PRODUCT SUBMITTAL		Date:	Architect / Owner:
Job Name:			
		Contractor:	
Part No.	Qty:	Notes:	

THE INFORMATION CONTAINED IN THIS SUBMITTAL SHEET IS PROPRIETARY TO WALRAVEN, INC. AND IS SUBJECT TO CHANGE WITHOUT NOTICE. THIS INFORMATION MAY NOT BE REPRODUCED IN PART OR WHOLE WITHOUT WRITTEN AUTHORIZATION FROM WALRAVEN, INC.

