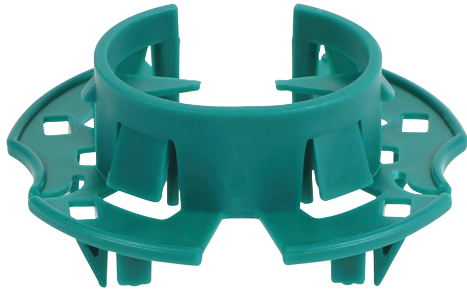


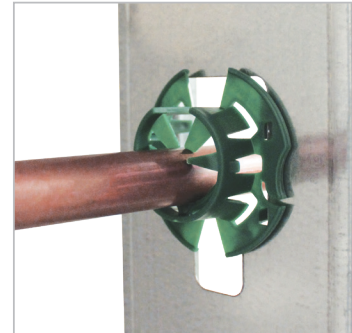
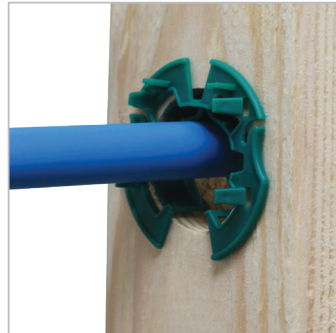
Grommet



Product Specifications:

- Easily snaps into pre-drilled/punched holes to protect electrical wiring and plumbing lines from directly contacting the metal studs
- Fits PEX 90° bend support (item #59490973)
- Accommodates 1/2" and 3/4" PEX, CPVC and copper pipe
- Conveniently fits in both round and rectangular stud holes
- Eliminates/prevents pipe rattle
- One-piece design
- Materials: Polypropylene, PA6 (polyamide)

Item Number	D / CTS (inches)	Items per pkg.
08549922	1/2-3/4	100



PRODUCT SUBMITTAL		Date:	Architect / Owner:
Job Name:			
		Contractor:	
Part No.	Qty:	Notes:	

THE INFORMATION CONTAINED IN THIS SUBMITTAL SHEET IS PROPRIETARY TO WALRAVEN, INC. AND IS SUBJECT TO CHANGE WITHOUT NOTICE. THIS INFORMATION MAY NOT BE REPRODUCED IN PART OR WHOLE WITHOUT WRITTEN AUTHORIZATION FROM WALRAVEN, INC.

