

Colliers lourds inox

(M 12 02)

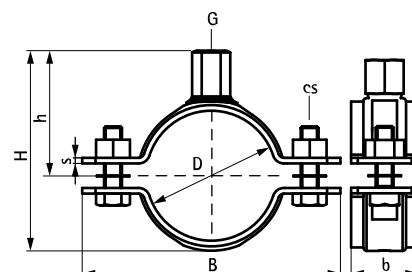
M12 - M16



Avantages et caractéristiques

- collier en deux parties avec deux vis
- modèle lourd
- avec embase soudée au CO₂
- matière : acier inoxydable 1.4401 (A4) - EN 10088, AISI 316

| Code article | D (mm) | D (") | DN | G | B (mm) | H (mm) | h (mm) | b x s (mm) | cs | F _{az} (N) | Cond.1 |
|--------------|-----------|----------|-----|-----|-----------|-----------|-----------|---------------|-------------|------------------------|--------|
| 33077078 | 72 - 78 | 2 1/2 | 65 | M12 | 134 | 102 | 62 | 25 x 3,0 | M10 x 30 mm | 2 200 | 5 |
| 33077085 | 79 - 85 | - | - | M12 | 141 | 109 | 66 | 25 x 3,0 | M10 x 30 mm | 2 200 | 5 |
| 33077092 | 86 - 92 | 3 | 80 | M12 | 148 | 116 | 69 | 25 x 3,0 | M10 x 30 mm | 2 200 | 5 |
| 33077099 | 93 - 99 | - | - | M12 | 155 | 123 | 72 | 25 x 3,0 | M10 x 30 mm | 2 200 | 5 |
| 33077106 | 98 - 106 | - | - | M12 | 174 | 132 | 77 | 30 x 4,0 | M10 x 40 mm | 4 100 | 5 |
| 33077116 | 108 - 116 | 4 | 100 | M12 | 184 | 142 | 82 | 30 x 4,0 | M10 x 40 mm | 4 100 | 5 |
| 33077123 | 115 - 123 | - | - | M12 | 191 | 149 | 85 | 30 x 4,0 | M10 x 40 mm | 4 100 | 5 |
| 33077133 | 125 - 133 | - | - | M12 | 201 | 159 | 91 | 30 x 4,0 | M10 x 40 mm | 4 100 | 5 |
| 33077140 | 132 - 140 | 5 | 125 | M12 | 208 | 166 | 94 | 30 x 4,0 | M10 x 40 mm | 4 100 | 5 |
| 33077149 | 139 - 149 | - | - | M12 | 217 | 175 | 99 | 30 x 4,0 | M10 x 40 mm | 4 100 | 5 |
| 33077169 | 159 - 169 | 6 | 150 | M12 | 257 | 195 | 109 | 40 x 4,0 | M12 x 50 mm | 4 900 | 5 |
| 33077183 | 173 - 183 | - | - | M12 | 271 | 209 | 116 | 40 x 4,0 | M12 x 50 mm | 4 900 | 5 |
| 33077202 | 192 - 202 | - | - | M12 | 290 | 228 | 125 | 40 x 4,0 | M12 x 50 mm | 4 900 | 5 |
| 33077219 | 208 - 219 | - | - | M12 | 307 | 245 | 134 | 40 x 4,0 | M12 x 50 mm | 4 900 | 5 |
| 33077227 | 217 - 227 | 8 | 200 | M12 | 315 | 253 | 138 | 40 x 4,0 | M12 x 50 mm | 4 900 | 5 |
| 33077241 | 229 - 241 | - | - | M12 | 329 | 267 | 145 | 40 x 4,0 | M12 x 50 mm | 4 900 | 5 |
| 33077250 | 240 - 250 | - | - | M16 | 338 | 282 | 154 | 40 x 4,0 | M12 x 50 mm | 4 900 | 5 |
| 33077264 | 254 - 264 | - | - | M16 | 352 | 296 | 161 | 40 x 4,0 | M12 x 50 mm | 4 900 | 5 |
| 33077275 | 265 - 275 | 10 | 250 | M16 | 363 | 307 | 167 | 40 x 4,0 | M12 x 50 mm | 4 900 | 5 |
| 33077289 | 279 - 289 | - | - | M16 | 377 | 321 | 174 | 40 x 4,0 | M12 x 50 mm | 4 900 | 5 |
| 33077325 | 315 - 325 | 12 | 300 | M16 | 415 | 359 | 192 | 40 x 4,0 | M12 x 50 mm | 4 900 | 5 |
| 33077341 | 329 - 341 | - | - | M16 | 429 | 373 | 200 | 40 x 4,0 | M12 x 50 mm | 4 900 | 5 |



Complémentaire

Fixpoint Console charges moyennes inox
Pièces coulissantes inox pour dilatation
Walraven RapidStrut® Rail de montage inox

Complémentaire

Walraven RapidStrut® Rail de montage double inox
Tiges filetées inox
Plaque murale soudée CO₂ inox