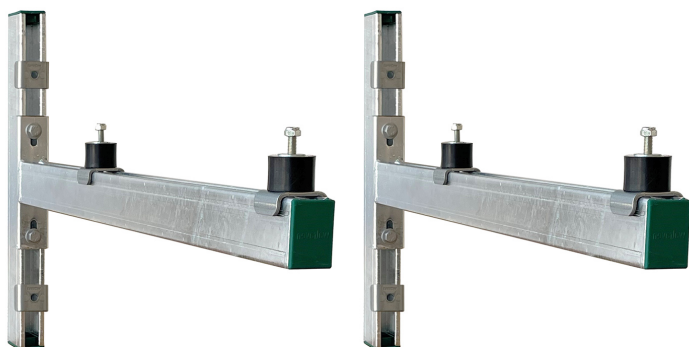


Walraven Wall Mounting Set 62|H

(H 19 20)

universal Mounting Set for outdoor appliances



Características y ventajas

- apto para uso en exteriores e interiores
- universal mounting brackets for fixing indoor and outdoor appliances to the wall
- diseñado para las bombas de calor estándar más comunes (para los modelos de bomba de calor con rosca hembra, es necesario pedir por separado el kit ISO de montaje mural Walraven 6901998 - véanse las instrucciones de montaje)
- stepless adjustable in height and wall distance
- with anti-vibration mounts type Walraven VibraTek® SB-MM
- material: acero 1.0332
- material: vibration damper; rubber SBR + NR 55°+-5 Shore A steel class 4.8
- surface treatment: hot dip galvanized (EN-ISO 1461)
- set consists of:
 - 2 Cantilever Arms type RapidStrut 62|H
 - 2 lengths of 500mm wall rail type RapidStrut 62|H
 - 4 vibration dampers with pre-assembled fasteners
 - 6 rail endcaps
 - fasteners to connect Cantilever Arms to the wall rail
 - assembly instruction
 - anchors for mounting to the wall not included (order separately)

Pieza Nº	Tipo	L	L1 (mm)	H (mm)	h (mm)	F _{a,z} (N)	U.m.v.1	Unid.
6901975	62 H	819 mm	750	508	200	1.200	1	pza.

Max. allowed load F_{a,z} per Set: 1.200 Newton (Total weight of the unit).

