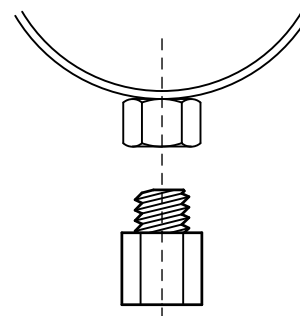
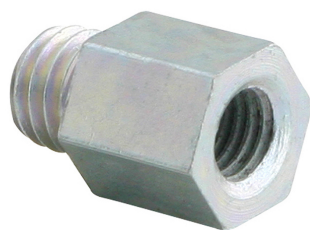


# Walraven Adaptadores roscados (Ext/Int)

(K 55 35)

ajuste para conexión roscada



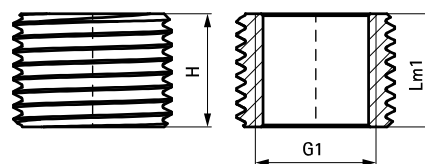
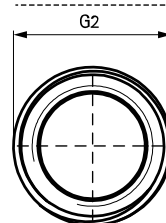
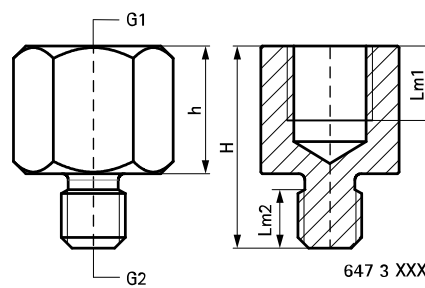
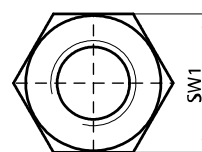
6473XXX

6473521  
6484321

## Características y ventajas

- para alargar o reducir el tamaño de rosca ■ acero zincado en la conexión de abrazaderas, etc.
- material: acero

| Pieza Nº | H<br>(mm) | h<br>(mm) | G1   | G2   | Lm1<br>(mm) | Lm2<br>(mm) | SW1<br>(mm) | U.m.v.1 | U.m.v.2 |
|----------|-----------|-----------|------|------|-------------|-------------|-------------|---------|---------|
| 6473008  | 19        | 12        | M8   | M6   | 7,0         | 5,5         | 13          | 100     | 1.000   |
| 6473206  | 20        | 12        | M6   | M8   | 7,0         | 6,0         | 13          | 100     | 1.000   |
| 6473210  | 23        | 15        | M10  | M8   | 9,0         | 6,0         | 13          | 100     | 1.000   |
| 6473212  | 23        | 15        | M12  | M8   | 8,0         | 6,0         | 17          | 50      | 500     |
| 6473221  | 30        | 22        | G1/2 | M8   | 13,0        | 8,0         | 27          | 50      | 250     |
| 6473308  | 21        | 13        | M8   | M10  | 7,0         | 6,0         | 13          | 100     | 1.000   |
| 6473312  | 25        | 15        | M12  | M10  | 8,0         | 8,0         | 17          | 50      | 500     |
| 6473316  | 32        | 22        | M16  | M10  | 13,0        | 8,0         | 24          | 25      | 250     |
| 6473321  | 31        | 21        | G1/2 | M10  | 12,0        | 8,0         | 27          | 25      | 250     |
| 6473408  | 23        | 13        | M8   | M12  | 7,0         | 7,5         | 13          | 50      | 1.000   |
| 6473410  | 23        | 13        | M10  | M12  | 8,0         | 7,5         | 13          | 50      | 1.000   |
| 6473416  | 32        | 22        | M16  | M12  | 11,0        | 8,0         | 24          | 50      | 250     |
| 6473510  | 32        | 18        | M10  | M16  | 9,0         | 11,0        | 19          | 50      | 250     |
| 6473512  | 32        | 18        | M12  | M16  | 10,0        | 11,0        | 19          | 50      | 250     |
| 6473421  | 26        | 11        | M10  | G1/2 | 9,0         | 13,0        | 27          | 25      | 125     |
| 6473521  | 15        | -         | M16  | G1/2 | 15,0        | -           | -           | 100     | 1.000   |
| 6473621  | 25        | 15        | G3/4 | G1/2 | 12,0        | 7,0         | -           | 25      | 250     |
| 6473721  | 32        | 20        | G1   | G1/2 | 17,0        | 9,0         | -           | 10      | 100     |



647 3 521 /  
648 4 321