

# Stainless Steel Heavy Duty Clamp

(M 12 02)

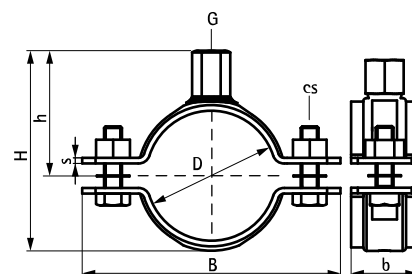
M12 - M16



## Características y ventajas

- abrazadera de dos piezas con dos tuercas bloqueantes
- diseño pesado
- con tuerca soldada al CO<sub>2</sub>
- material: stainless steel 1.4401 (A4) - EN 10088, AISI 316

Pieza Nº	D (mm)	D (°)	DN	G	B (mm)	H (mm)	h (mm)	b x s (mm)	cs	F <sub>a,z</sub> (N)	U.m.v.1
33077078	72 - 78	2½	65	M12	134	102	62	25 x 3,0	M10 x 30 mm	2.200	5
33077085	79 - 85	-	-	M12	141	109	66	25 x 3,0	M10 x 30 mm	2.200	5
33077092	86 - 92	3	80	M12	148	116	69	25 x 3,0	M10 x 30 mm	2.200	5
33077099	93 - 99	-	-	M12	155	123	72	25 x 3,0	M10 x 30 mm	2.200	5
33077106	98 - 106	-	-	M12	174	132	77	30 x 4,0	M10 x 40 mm	4.100	5
33077116	108 - 116	4	100	M12	184	142	82	30 x 4,0	M10 x 40 mm	4.100	5
33077123	115 - 123	-	-	M12	191	149	85	30 x 4,0	M10 x 40 mm	4.100	5
33077133	125 - 133	-	-	M12	201	159	91	30 x 4,0	M10 x 40 mm	4.100	5
33077140	132 - 140	5	125	M12	208	166	94	30 x 4,0	M10 x 40 mm	4.100	5
33077149	139 - 149	-	-	M12	217	175	99	30 x 4,0	M10 x 40 mm	4.100	5
33077169	159 - 169	6	150	M12	257	195	109	40 x 4,0	M12 x 50 mm	4.900	5
33077183	173 - 183	-	-	M12	271	209	116	40 x 4,0	M12 x 50 mm	4.900	5
33077202	192 - 202	-	-	M12	290	228	125	40 x 4,0	M12 x 50 mm	4.900	5
33077219	208 - 219	-	-	M12	307	245	134	40 x 4,0	M12 x 50 mm	4.900	5
33077227	217 - 227	8	200	M12	315	253	138	40 x 4,0	M12 x 50 mm	4.900	5
33077241	229 - 241	-	-	M12	329	267	145	40 x 4,0	M12 x 50 mm	4.900	5
33077250	240 - 250	-	-	M16	338	282	154	40 x 4,0	M12 x 50 mm	4.900	5
33077264	254 - 264	-	-	M16	352	296	161	40 x 4,0	M12 x 50 mm	4.900	5
33077275	265 - 275	10	250	M16	363	307	167	40 x 4,0	M12 x 50 mm	4.900	5
33077289	279 - 289	-	-	M16	377	321	174	40 x 4,0	M12 x 50 mm	4.900	5
33077325	315 - 325	12	300	M16	415	359	192	40 x 4,0	M12 x 50 mm	4.900	5
33077341	329 - 341	-	-	M16	429	373	200	40 x 4,0	M12 x 50 mm	4.900	5



### Complementarios

BIS Stainless Steel Fixpoint Console FPC 'Medium'  
 BIS Stainless Steel Expansion Guide Assembly  
 Walraven RapidStrut® Carril en acero inox

### Complementarios

Walraven RapidStrut® Carril doble en acero inoxidable  
 BIS Varillas roscadas en acero inox - 530  
 BIS Placa de pared acero inoxidable soldada a CO<sub>2</sub>