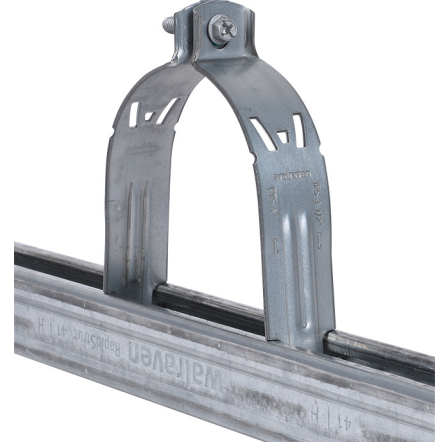


W100 Strut Clamp

(H 32 217)

to be used with steel pipes and conduit 71.0 - 137.0 mm



Features and benefits

- the new alternative to the standard Strut Clamp
- easier, faster, safer - installs with one tool
- can be used with Hexagon Head, Robertson, Philips, flat screw driver
- W Series Clamps are boxed for easy handling - no more bags
- material: steel
- surface treatment: high grade Zn-Mg based coating (600 hours salt spray)

Part No.	D	D	DN	B	B	H	H	h	h	s	s	SW1	SW1	Pack
	(mm)	(")		(mm)	(")	(mm)	(")	(mm)	(")	(mm)	(Ga)	(mm)	(")	1
2045070	71.0	2-4/5	-	92.9	3-2/3	108.8	4-2/7	6	1/4	1.75	15	9.53	3/8	50
2045076	76.0	3	65	97.0	3-5/6	114.1	4-1/2	6	1/4	1.75	15	9.53	3/8	50
2045089	89.0	3-1/2	80	113.5	4-1/2	125.0	5	6	1/4	1.75	15	9.53	3/8	50
2045094	98.0	3-6/7	-	118.1	4-2/3	137.2	5-2/5	6	1/4	1.75	15	9.53	3/8	50
2045110	114.4	4-1/2	100	141.4	5-4/7	150.0	6	6	1/4	2.00	14	9.53	3/8	50
2045120	123.4	4-6/7	-	149.2	5-7/8	159.5	6-2/7	6	1/4	2.00	14	9.53	3/8	50
2045135	137.0	5-2/5	125	174.4	6-6/7	172.2	6-7/9	6	1/4	2.00	14	9.53	3/8	50

