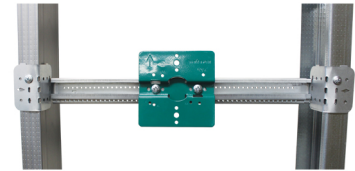
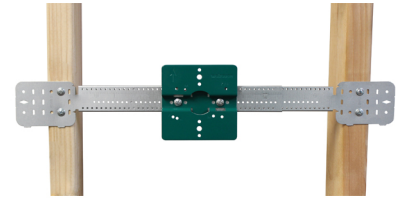
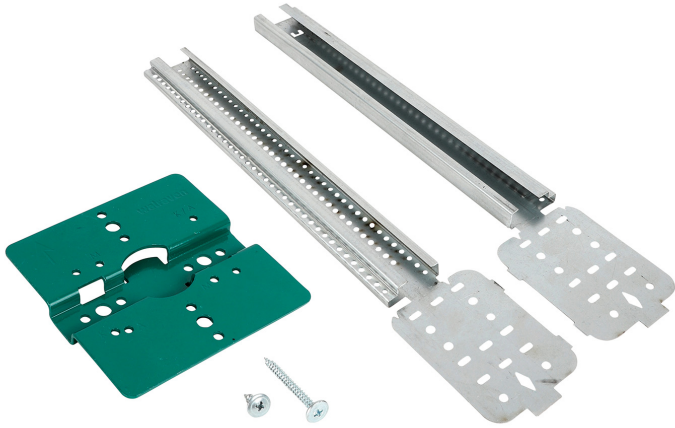


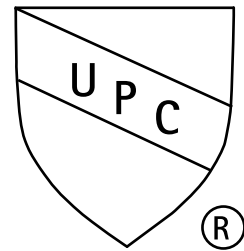
# Rapid Sliding Wall Bracket (RSWB) Shower Valve Bracket Kit

(02 05 220)



### Features and benefits

- mounting kit for the industries most popular shower valves
- versatile - use square nut and bolt for adjustable application and screws for fixed application
- bracket is mounted to stud and the shower valve plate is attached using screws (included)
- individually bagged for convenience



Part No.	Cont.	Pack 1
59490960	RSWB3, spans from 12" to 20", Universal Shower Valve Plate 1 (USVP1*), hardware	25
59490961	RSWB4, spans from 16" to 26", Universal Shower Valve Plate 1 (USVP1*), hardware	25
59490950	RSWB4, spans from 16" to 26", Universal Shower Valve Plate 2 (USVP2**), hardware	25

\*USVP1: Universal Shower Valve Plate 1 is used with Delta, Moen®, Kohler® and American Standard shower valves.

\*\*USVP2: Universal Shower Valve Plate 2 is used with PROFLO® and Price Pfister® shower valves.