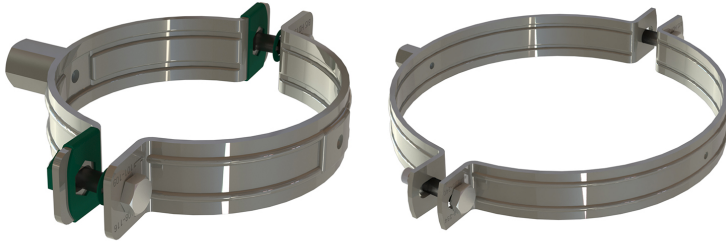


Heavy Duty Clamp – Epoxy coated

(B 10 210)

110 - 315 mm



33099110
33099125

Features and benefits

- up to and including 5": locking nut is captive, hidden in plastic holder
- epoxy coated HD clamp with dual nut 3/8"-1/2"
- material: steel

Part No.	D (mm)	D (")	B (")	H (")	b x s (")	F _{a,z} (lbf)	Pack 1
33099110	110	3½	6.882	6.024	1.181 x 0.118	900	25
33099125	125	4	7.555	6.693	1.181 x 0.118	900	25
33099160	160	6	9.468	7.598	1.496 x 0.157	1,840	15
33099200	200	8	10.775	8.898	1.496 x 0.157	1,840	15
33099250	250	10	13.201	10.945	1.496 x 0.157	1,840	2
33099315	315	12	15.921	13.701	1.889 x 0.194	2,700	2

