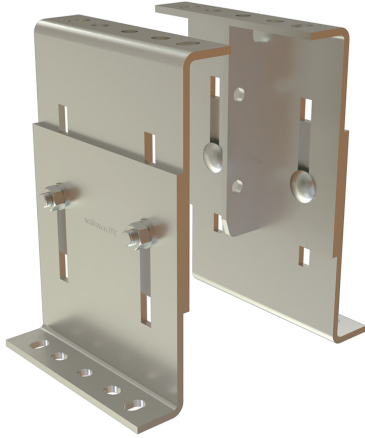


# FixPoint Console 'Medium' (BUP1000)

(E 05 215)



## Features and benefits

- flexible use console module for high forces (depending on the situation, detailed design by technical service)
- can be used as a pipe connection point in conjunction with 2 or 3 heavy-duty clamps
- material: steel
- surface protection:
  - product is part of the Walraven BIS UltraProtect® 1000 system
  - suitable for in and outdoor applications
  - stands min. 1,000 hours salt spray test (max. 5% red rust) according to ISO 9227

Part No.	B (mm)	H (mm)	h (mm)	s (mm)	d1 (mm)	d2 (mm)	d3 (mm)	k (mm)	Fa,y (lbs)	Pack 1
6698214	250	260 - 374	260	8.0	20.0 x 17.0	Ø 17	25.0 x 17.0	180	-	-

