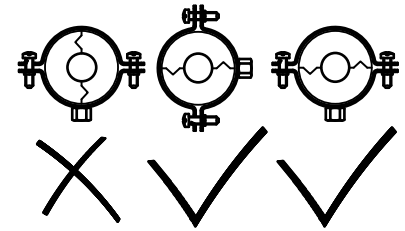
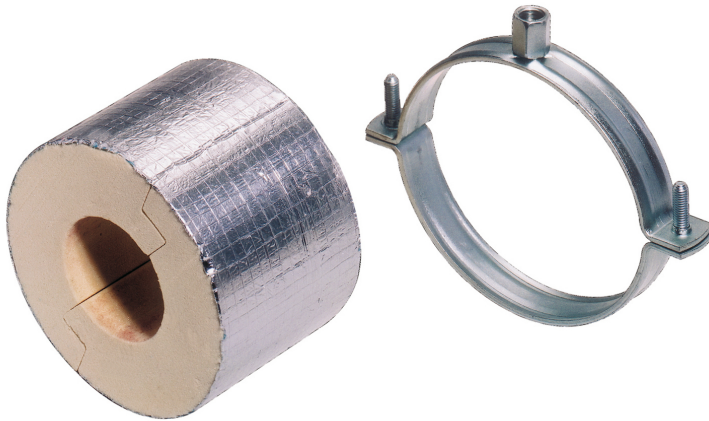


# BISOFIX<sup>®</sup> PIR40

for insulated pipes 33.7 - 54.0 mm

M8/10 - M16

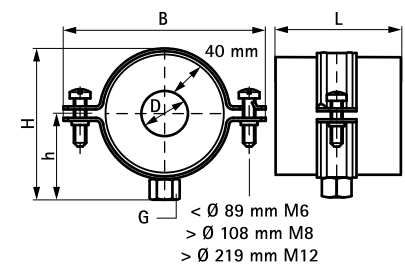
(D 05 25)



## Features and benefits

- insulation shell (thickness 40 mm) with pipe clamp BIS 2S
- for fixing of thermal isolated pipe of steel, copper or stainless steel
- to be used in combination with hard insulation material
- a vapour sealed connection with pipe insulation can easily be made by use of aluminium tape
- when installing the pipe support, always align the contact areas of the insulation shells horizontally (to prevent tensile and pressure forces)
- size and specific weight are tuned to pipe weight
- material: clamp of steel; insulation shell made of PIR thermally hardening foam with a moisture proof outer covering of glass-fibre reinforced aluminium foil
- does not contain CFC, HCFC, formaldehyde or cadmium
- excellent thermal and mechanical properties
- clamp: zinc plated
- working temperature from -180 °C to +140 °C

Part No.	D (mm)	Pack 1
221 4 033	33.7 - 35.0	12
221 4 042	42.4	12
221 4 048	48.3	24
221 4 054	54.0	24



**Complementary**  
 BIS RapidRail<sup>®</sup> Fixing System  
 BIS Fixing Accessories  
 BIS Fastenings