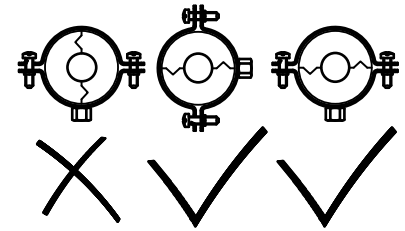
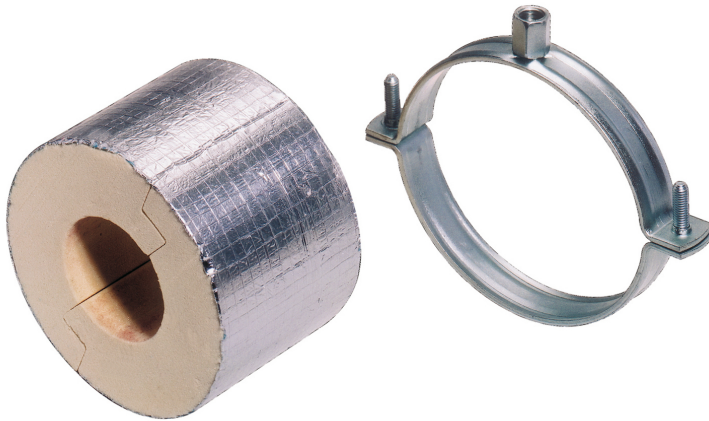


BISOFIX[®] PIR20

for insulated pipes 54.0 - 114.3 mm

M8/10

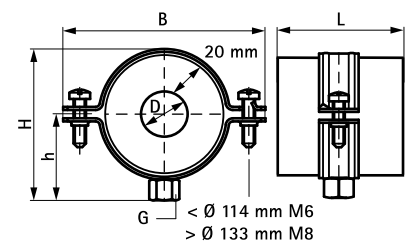
(D 05 15)



Features and benefits

- insulation shell (thickness 20 mm) with pipe clamp BIS 2S
- for fixing of thermal isolated pipe of steel, copper or stainless steel
- to be used in combination with hard insulation material
- a vapour sealed connection with pipe insulation can easily be made by use of aluminium tape
- when installing the pipe support, always align the contact areas of the insulation shells horizontally (to prevent tensile and pressure forces)
- size and specific weight are tuned to pipe weight
- material: clamp of steel; insulation shell made of PIR thermally hardening foam with a moisture proof outer covering of glass-fibre reinforced aluminium foil
- does not contain CFC, HCFC, formaldehyde or cadmium
- excellent thermal and mechanical properties
- clamp: zinc plated
- working temperature from -180 °C to +140 °C

Part No.	D (mm)	Pack 1
221 2 054	54.0	12
221 2 060	60.3	12
221 2 076	76.1	12
221 2 089	88.9	24
221 2 114	114.3	18



Complementary
 BIS RapidRail[®] Fixing System
 BIS Fixing Accessories
 BIS Fastenings