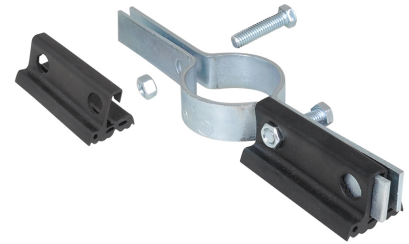


# BIS Riser Clamp (zp)

(B 15 40)

for metal and plastic pipe

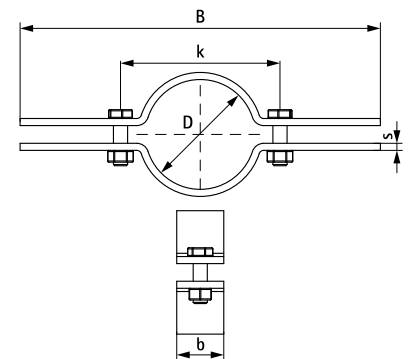


## Features and benefits

- recommended for support and stabilizing of vertical pipe runs
- perfect for plastic and metal pipe applications where riser is required above and below floor penetration
- material: Carbon Steel
- zinc plated



Part No.	Part No. (incl. Pad)	D / IPS (")	Bolt (")	B (")	b (")	s (Ga)	k (")	Part No. Pad	Fa,z (lbs)	Pack 1
B497 3 025	B4973025W P	1/2	3/8"	8 5/8	1	8	2 1/8	9737 1 00120	220	25
B497 3 027	B4973027W P	3/4	3/8"	8 13/16	1	8	2 5/16	9737 1 00120	220	25
B497 3 034	B4973034W P	1	3/8"	9 1/16	1	8	2 5/8	9737 1 00120	220	25
B497 3 042	B4973042W P	1 1/4	3/8"	9 7/16	1	8	2 15/16	9737 1 00120	220	25
B497 3 048	B4973048W P	1 1/2	3/8"	10	1	8	3 7/16	9737 1 00120	250	25
B497 3 060	B4973060W P	2	3/8"	10 9/16	1	8	4	9737 1 00120	300	25
B497 3 075	B4973075W P	2 1/2	3/8"	11 1/8	1	3	4 9/16	9737 1 00120	400	25
B497 3 090	B4973090W P	3	3/8"	11 13/16	1	3	5 1/4	9737 1 00120	500	25
B497 3 106	B4973106W P	3 1/2	1/2"	13	1	3	6	9737 1 00120	600	25
B497 3 114	B4973114W P	4	1/2"	13 5/8	1	3	6 5/8	9737 1 00120	750	20
B497 3 140	B4973140W P	5	1/2"	14 1/8	1 1/2	3	7 5/8	9737 1 00226	1,500	10
B497 3 169	B4973169W P	6	1/2"	15 3/8	1 1/2	3	8 7/8	9737 1 00226	1,600	10
B497 3 227	B4973227W P	8	5/8"	18 5/8	1 1/2	3/8"	12	9737 1 00226	2,500	5
B497 3 275	-	10	5/8"	21	2	3/8"	14 1/2	-	2,500	4
B497 3 325	-	12	5/8"	22 3/4	2	1/2"	17	-	2,700	1
B497 3 364	-	14	5/8"	24	2	1/2"	17 7/8	-	2,700	1
B497 3 408	-	16	3/4"	26	2 1/2	5/8"	21	-	2,900	1



Zinc Approvals: UL and cUL Approved (2" through 8").

Zinc Approvals: Complies with Manufacturers' Standardization Society MSS SP-58 and SP-69 (Type 8).

Complementary  
BIS Whisper Riser Pad