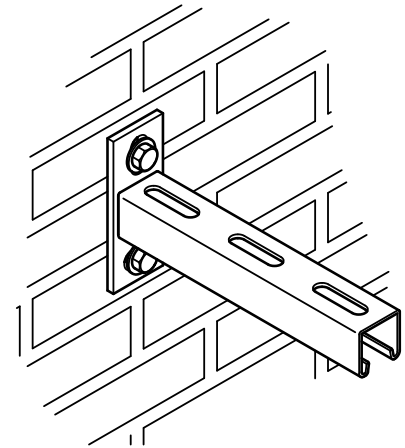
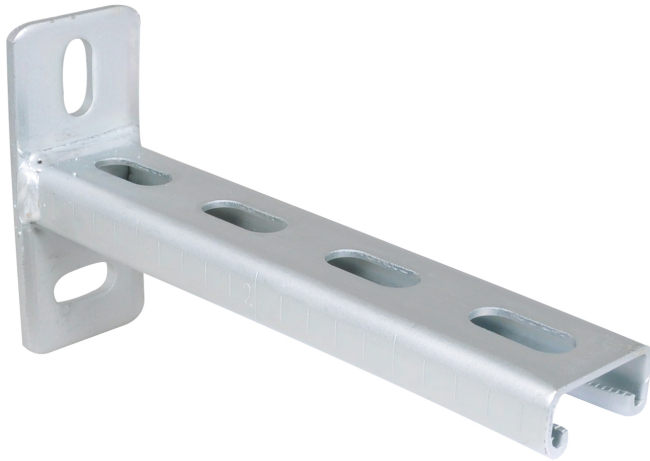


BIS RapidStrut® Cantilever Arm (BUP1000)

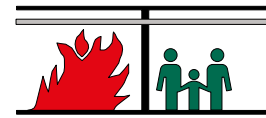
(H 08 05)

fixing to wall



Features and benefits

- wall plate welded on Strut Profile
- slots at 90° to each other to simplify fixing
- CO₂ welded
- inward formed flanges with serrated profile for extra grip
- material: steel 1.0226
- surface protection:
 - product is part of the BIS UltraProtect® 1000 system
 - suitable for in and outdoor applications
 - stands min. 1,000 hours salt spray test (max. 5% red rust) according to ISO 9227
- tested for fire safety
- for more information about the max. allowed load ($F_{a,z}$) please refer to the loading tables or our online datasheet 'Technical Details BIS RapidStrut®'



Part No.	L	B (")	H (")	h (")	s (")	d1 (mm)	k (")	From Rail	Pack 1
660 3 831	7.8"		4.3	2.75	.2	25 x 11	2.75	Strut 1 5/8"x13/16"x12g	10
660 3 833	17.7"		4.3	2.75	0.2	25 x 11	2.75	Strut 1 5/8"x13/16"x12g	10
660 3 834	23.6"	1.89	4.33	2.75	0.2	25 x 11	2.75	Strut 1 5/8"x13/16"x12g	10
660 3 862	11.8"	1.89	5.12	3.44	0.28	30 x 13	3.44	Strut 1 5/8"x1 5/8"x12g	10
660 3 863	17.7"		5.1	3.45	0.275	30 x 13	3.45	Strut 1 5/8"x1 5/8"x12g	10
660 3 864	23.6"		5.1	3.45	0.275	30 x 13	3.45	Strut 1 5/8"x1 5/8"x12g	8

Strut 1 5/8"x1 5/8"x12g and above tested for fire safety.

For more information about the max. allowed load ($F_{a,z}$) please refer to the loading tables or our online datasheet 'Technical Details BIS RapidStrut®'.

