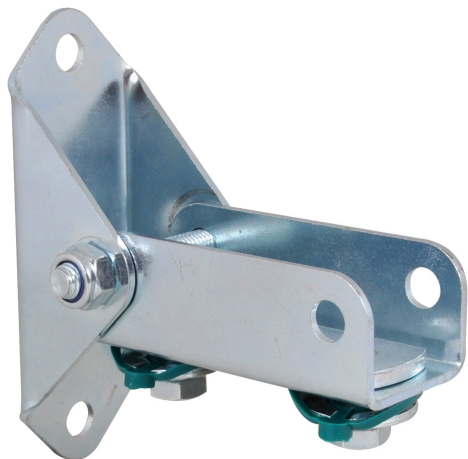


BIS RapidRail® Wall Plate (Hinged)

(G 15 10)

fixing to wall



Features and benefits

- wall plate with hinged U-profile
- also used to strengthen rail constructions
- for fixing of rail to sloping walls
- Part No. 661 3 250: suitable for WM15
- material: steel
- zinc plated

Part No.	T (max.) (ft lbs)	For Rail	Pack 1
661 3 250	11	WM15	20

