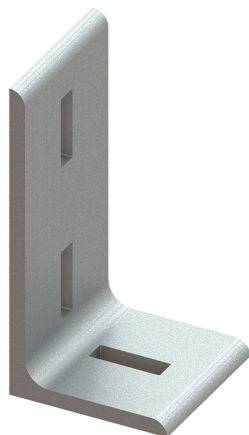


Walraven Maxx Profile Connector 90°

(H2 05 16)

to make Maxx rail fabrications

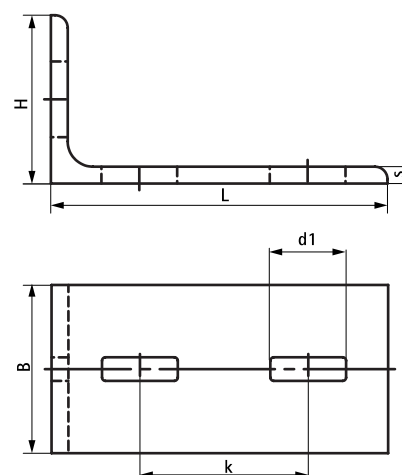


Features and benefits

- 3-hole connector for Maxx profiles
- made of L-steel for extra stability
- packed per piece
- material: steel S235JR
- hot dip galvanized

| Part No. | Model | Type | L | B | H | s | d1 | k | F _{a,x} | F _{a,x 2} | Pack 1 |
|----------|---------|------------|--------|------|------|------|---------|------|------------------|--------------------|--------|
| | | | | (mm) | (mm) | (mm) | (mm) | (mm) | (N) | (N) | |
| 6681018 | 3 holes | AC80/90-3 | 200 mm | 80 | 100 | 10.0 | 45 x 14 | 100 | 5,000* | 8,250** | 1 |
| 6681020 | 3 holes | AC100/90-3 | 200 mm | 100 | 100 | 10.0 | 45 x 14 | 100 | 5,000* | 8,250** | - |

* = When using the connector with 1 pc. Maxx Hammerfix (65219214)
 ** = When using the connector with 2 pcs. Maxx Hammerfix (65219214)



Complementary

Walraven Maxx Heavy Rail Profile
 Walraven Maxx Hammerfix