

Walraven Maxx Linear Connector Set

(H2 05 33)

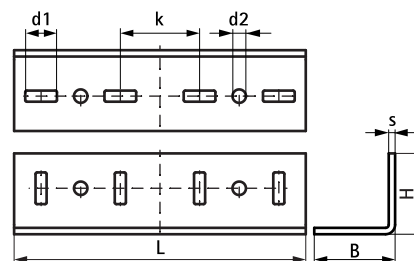
to make Maxx rail fabrications



Features and benefits

- for linear connection of Maxx profiles type MX100 and MX120
- material: steel S235JR
- to be used in pairs
- hot dip galvanized
- delivery and assembly always in pairs (1 piece = set of 2)

Part No.	Type	L	B	H	s	d1	d2	k	Pack 1	App.
			(mm)	(mm)	(mm)	(mm)	(mm)	(mm)		
6589310	LC100/120	368 mm	102	102	8	40 x 14	Ø 17,0	100	1	pc.



Complementary

Walraven Maxx Heavy Rail Profile
Walraven Maxx Hammerfix