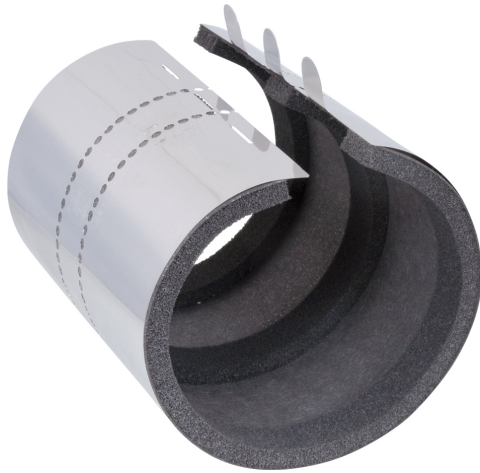


Pacifyre[®] MK II Fire Sleeve (M) – Large

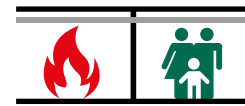
(U 04 12)

for penetrations of metal pipes (insulated or non-insulated) 213 - 375 mm



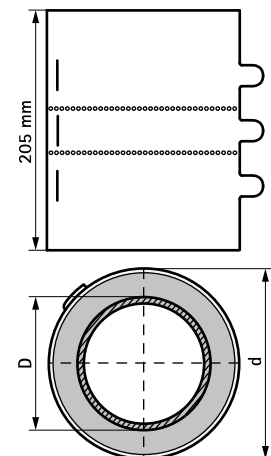
Features and benefits

- for pipe penetrations of insulated or non-insulated metal pipes in accordance with e.g. BS476-20, in walls (solid walls or light partition walls) and ceilings with fire protection requirements
- the sleeve provides a guaranteed protection against fire, smoke and noise
- expansion and contraction of the pipe remains possible
- minimum space required, therefore can be applied in areas of hard accessibility
- a higher flexibility due to minimal overhang on wall and ceiling seals
- no tools, drilling or extra fixing materials needed
- simple and easy to install
- maintenance free
- noise reduction test report from IRB (Fraunhofer Institut - Germany) available
- tested according to EN 1366-3
- in accordance with many EU country building regulations



Part No.	D (mm)	D (°)	DN	d (mm)	Pack 1	Pack 2
2141213215	213 - 215	-	-	237	1	-
2141219221	219 - 221	8	200	243	1	-
2141228230	228 - 230	-	-	252	1	-
2141240242	240 - 242	-	-	264	1	-
2141267269	267 - 269	-	-	291	1	-
2141273275	273 - 275	10	250	297	1	-
2141373375	373 - 375	-	-	397	1	-

For Pacifyre[®] MK II Fire Sleeves in other sizes, please contact your Walraven Sales Company.



Complementary

Tangit FP 550 2C Fire Protection Foam
Tangit FP 800 Fire Protection Coating
Pacifyre[®] FPM

Complementary

Pacifyre[®] ID-Card