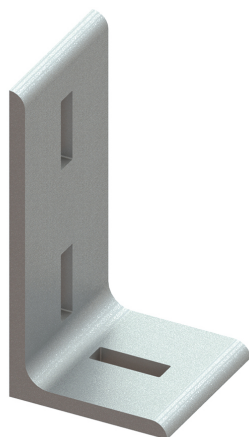


Maxx Profile Connector 90°

(H2 05 16)

to make Maxx rail fabrications

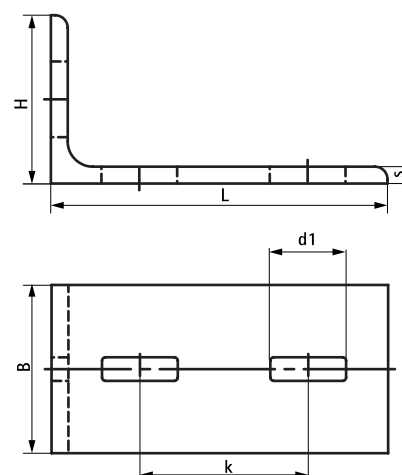


Features and benefits

- 3-hole connector for Maxx profiles
- made of L-steel for extra stability
- packed per piece
- material: steel S235JR
- hot dip galvanized

Part No.	Model	Type	L	B	H	s	d1	k	F _{a,x} (N)	F _{a,x 2} (N)	Pack 1
6681018	3 holes	AC80/90-3	200 mm	80 (mm)	100 (mm)	10.0 (mm)	45 x 14 (mm)	100 (mm)	5,000*	8,250**	1
6681020	3 holes	AC100/90-3	200 mm	100 (mm)	100 (mm)	10.0 (mm)	45 x 14 (mm)	100 (mm)	5,000*	8,250**	-

* = When using the connector with 1 pc. Maxx Hammerfix (65219214)
 ** = When using the connector with 2 pcs. Maxx Hammerfix (65219214)



Complementary

Maxx Heavy Rail Profile
Maxx Hammerfix