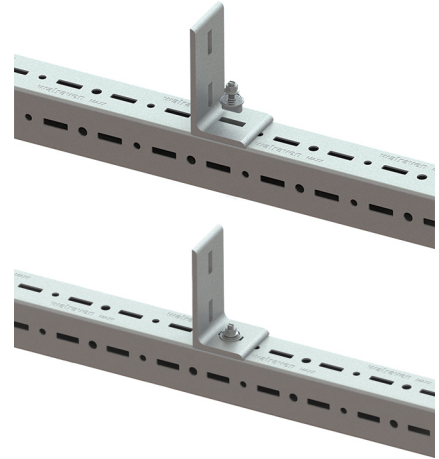
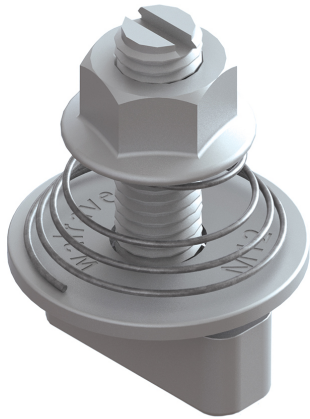


## Maxx Hammerfix

for fixing to Maxx Heavy Rail Profiles

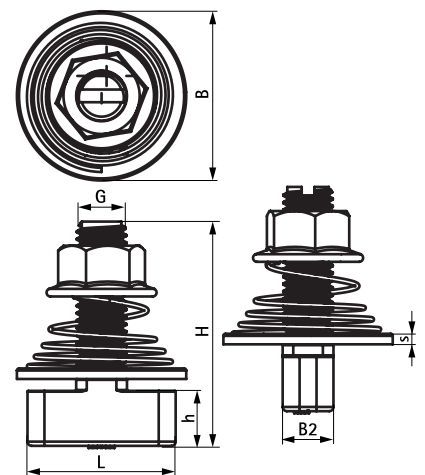
(H2 05 26)



### Features and benefits

- form-locking connector
- retains assembly in place before final tightening
- pre-assembled and ready to use for a quick fixing in profile perforation by a push and 90° turn
- with visible mark on top to see the position of hammer end
- with square shaft to block in the profile hole pattern when tightening
- material: steel, strength class 8.8; spring made of stainless steel (AISI 316)
- hot dip galvanized

Part No.	Type	G	L	B	B2	H	h	s	T <sub>inst</sub>	F <sub>a,z</sub>	Pack 1
				(mm)	(mm)	(mm)	(mm)	(mm)	(Nm)	(N)	
65219214	HF	M12	35	40	12	53	12.8	2.5	75.0	14,500	25



### Complementary

Maxx Heavy Rail Profile  
Maxx Base Plate  
Maxx Profile Connector 90°

### Complementary

Maxx T-Connector  
Maxx Linear Connector Set  
Maxx U-Shape Bracket