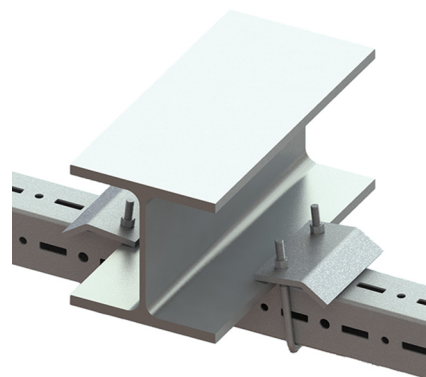
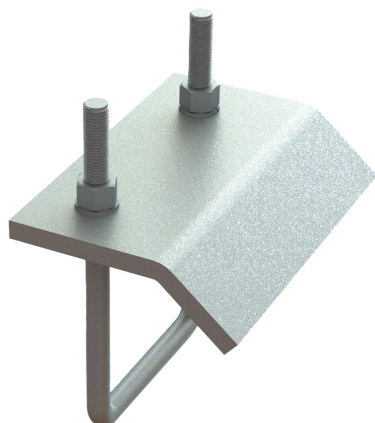


## Maxx Beam Clamp

for fixing profiles to beams

(H2 05 46)



### Features and benefits

- for a solid fixing to steel construction without the need for welding or drilling
- always use 2 beam clamps per fixing
- Part No. 6589110: suitable for MX100 and MX120
- Part No. 6589109: suitable for MX80
- material: steel S235JR
- hot dip galvanized

Part No.	A (mm)	Type	G	L	B (mm)	H (mm)	s (mm)	Lm1 (mm)	F <sub>a,z</sub> (N)	Pack 1
6589109	10 - 25	BC80	M12	107 mm	135	162	10.0	74	8,100*	-
6589110	10 - 25	BC100/120	M12	117 mm	173	190	10.0	85	8,100*	-

\* = Maximum allowed load per pairs

