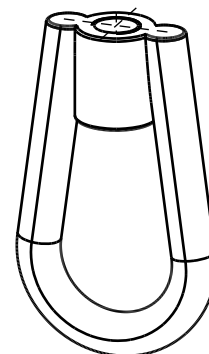


# IH270 Bow Nut

(P 12 55)



## Features and benefits

- standard finish: zinc plated

| Part No. | d<br>(mm) | R   | B<br>(mm) | H<br>(mm) | s<br>(mm) | d1<br>(mm) | F <sub>a,z</sub><br>(N) | Pack 1 |
|----------|-----------|-----|-----------|-----------|-----------|------------|-------------------------|--------|
| B6983010 | 18        | M10 | 45        | 67        | 10.0      | Ø 25       | 3,600                   | 100    |
| B6983012 | 20        | M12 | 55        | 75        | 12.0      | Ø 30       | 5,300                   | 80     |
| B6983016 | 20        | M16 | 55        | 75        | 12.0      | Ø 30       | 10,100                  | 80     |
| B6983020 | 25        | M20 | 65        | 100       | 14.0      | Ø 40       | 15,800                  | 1      |
| B6983024 | 30        | M24 | 90        | 120       | 17.0      | Ø 50       | 22,800                  | 1      |

Larger sizes available on request.

