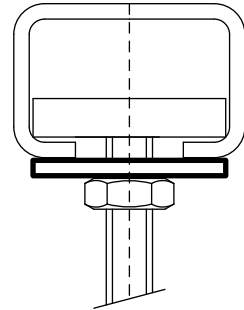


# BIS Washer (Flat)

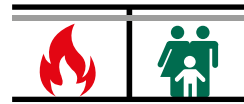
(G 30 75)

fixing to BIS RapidRail®



## Features and benefits

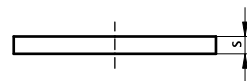
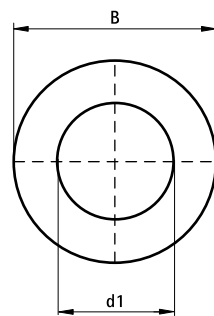
- suitable for rail WMO, 1, 15, 2, 30, 35
- material: steel
- zinc plated
- tested for fire safety



Part No.	B (mm)	s (mm)	d1 (mm)	For Rail	Pack 1	Pack 2
6533306	25	2.5	Ø 6.4	WMO - 35	100	2,500
6533308	25	2.5	Ø 8.4	WMO - 35	100	1,000
6533310	25	2.5	Ø 10.5	WMO - 35	100	1,000
6533312	25	2.5	Ø 13.0	WMO - 35	100	2,500

*Tested for fire safety.*

*Part No. 6533306 not tested for fire safety.*



## Complementary

RapidRail® Fixing Rail  
BIS RapidRail® Cantilever Arm (BUP1000)