

# BIS Thread Adaptor (M/F)

adjustment of thread connection

(K 55 35)



6473XXX

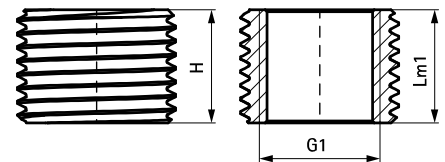
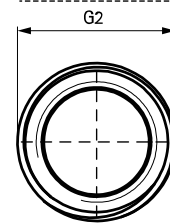
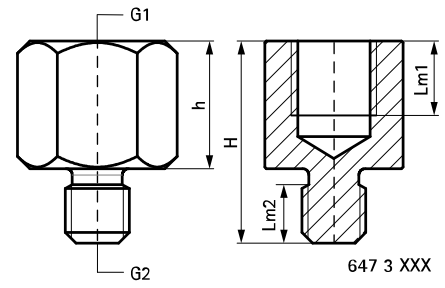
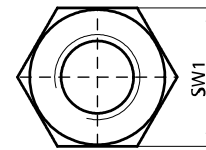
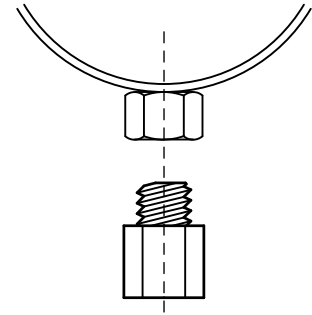


6473521  
6484321

## Features and benefits

- to enlarge or reduce the thread size in the connection of clamps, etc.
- material: steel
- zinc plated

| Part No. | H<br>(mm) | h<br>(mm) | G1   | G2   | Lm1<br>(mm) | Lm2<br>(mm) | SW1<br>(mm) | Pack 1 | Pack 2 |
|----------|-----------|-----------|------|------|-------------|-------------|-------------|--------|--------|
| 6473008  | 19        | 12        | M8   | M6   | 7.0         | 5.5         | 13          | 100    | 1,000  |
| 6473206  | 20        | 12        | M6   | M8   | 7.0         | 6.0         | 13          | 100    | 1,000  |
| 6473210  | 23        | 15        | M10  | M8   | 9.0         | 6.0         | 13          | 100    | 1,000  |
| 6473212  | 23        | 15        | M12  | M8   | 8.0         | 6.0         | 17          | 50     | 500    |
| 6473221  | 30        | 22        | G1/2 | M8   | 13.0        | 8.0         | 27          | 50     | 250    |
| 6473306  | 21        | 13        | M6   | M10  | 7.0         | 6.0         | 13          | 100    | 1,000  |
| 6473308  | 21        | 13        | M8   | M10  | 7.0         | 6.0         | 13          | 100    | 1,000  |
| 6473312  | 25        | 15        | M12  | M10  | 8.0         | 8.0         | 17          | 50     | 500    |
| 6473316  | 32        | 22        | M16  | M10  | 13.0        | 8.0         | 24          | 25     | 250    |
| 6473321  | 31        | 21        | G1/2 | M10  | 12.0        | 8.0         | 27          | 25     | 250    |
| 6473408  | 23        | 13        | M8   | M12  | 7.0         | 7.5         | 13          | 50     | 1,000  |
| 6473410  | 23        | 13        | M10  | M12  | 8.0         | 7.5         | 13          | 50     | 1,000  |
| 6473416  | 32        | 22        | M16  | M12  | 11.0        | 8.0         | 24          | 50     | 250    |
| 6473510  | 32        | 18        | M10  | M16  | 9.0         | 11.0        | 19          | 50     | 250    |
| 6473512  | 32        | 18        | M12  | M16  | 10.0        | 11.0        | 19          | 50     | 250    |
| 6473421  | 26        | 11        | M10  | G1/2 | 9.0         | 13.0        | 27          | 25     | 125    |
| 6473521  | 15        | -         | M16  | G1/2 | 15.0        | -           | -           | 100    | 1,000  |
| 6473621  | 25        | 15        | G3/4 | G1/2 | 12.0        | 7.0         | -           | 25     | 250    |
| 6473721  | 32        | 20        | G1   | G1/2 | 17.0        | 9.0         | -           | 10     | 100    |



647 3 521 /  
648 4 321